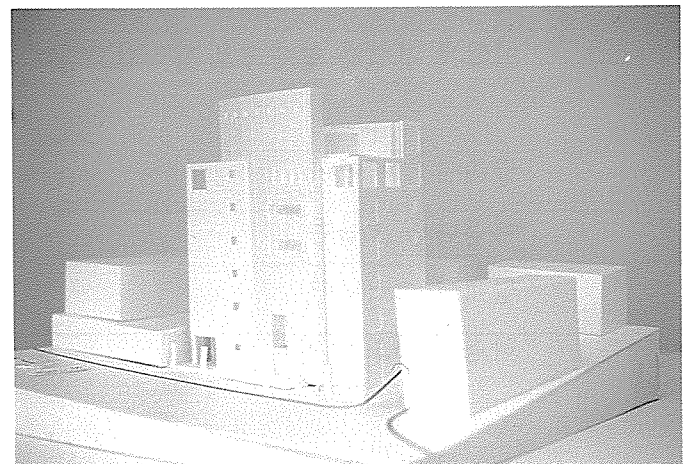
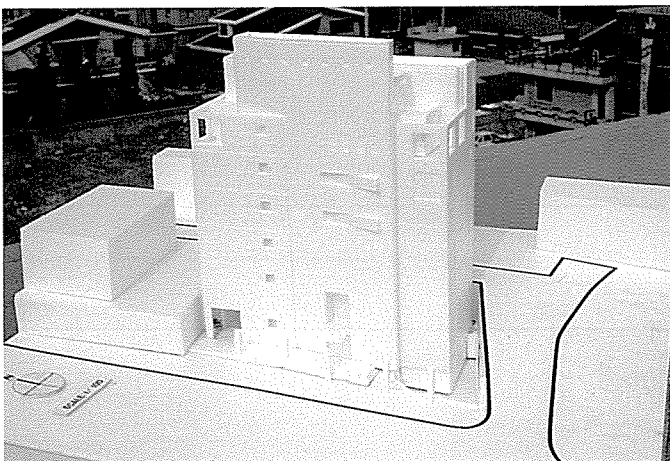
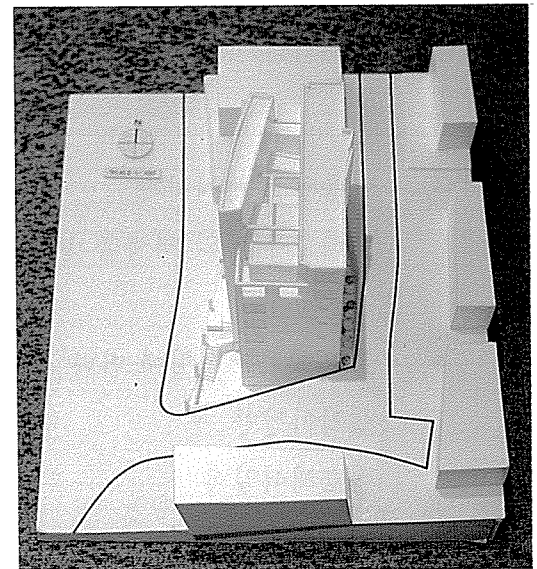
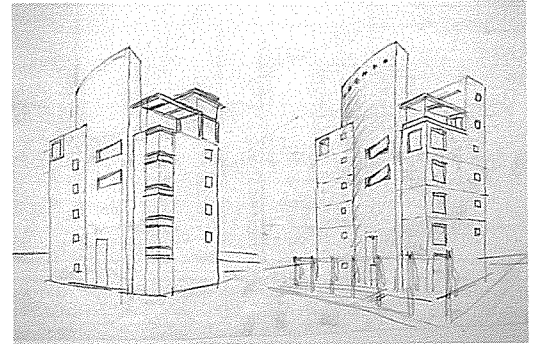


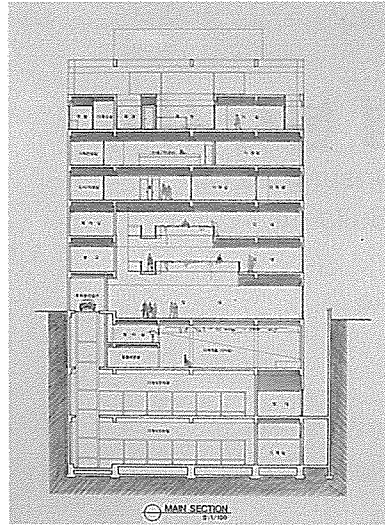
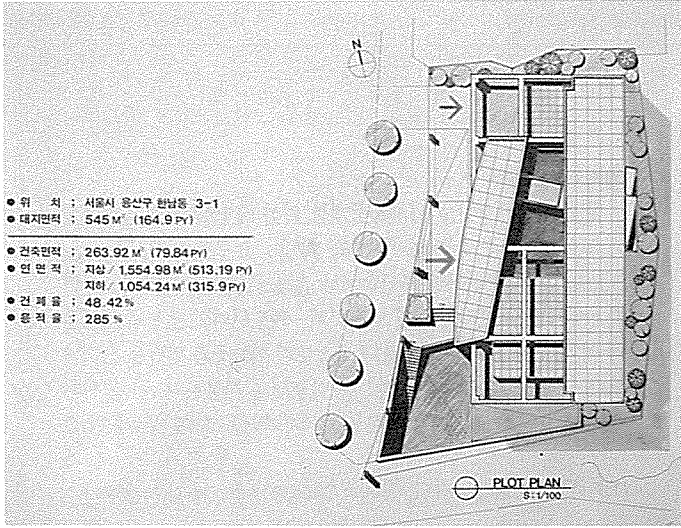
태 800

Tae 800

承孝相 / 종합건축사사무소 TSC
Designed by Seung, Hchloh - Sang

■
 대지위치 : 서울시 용산구 한남동 3-1
 대지면적 : 545m²
 건축면적 : 266.92m²
 연면적 : 2,678m²
 건폐율 : 48.4%
 용적률 : 285%
 규모 : 지하 3층, 지상 7층
 구조 : 철근 콘크리트조
 외부미감 : 노출콘크리트, 알루미늄 복합판넬





- ① 배치도
- ② 주 단면도
- ③ 북·동측 입면도
- ④ 서·남측 입면도
- ⑤ 지하 1, 1층 평면도
- ⑥ 5, 6, 7층 평면도
- ⑦ 지하 2, 3층 평면도
- ⑧ 2, 3, 4층 평면도

