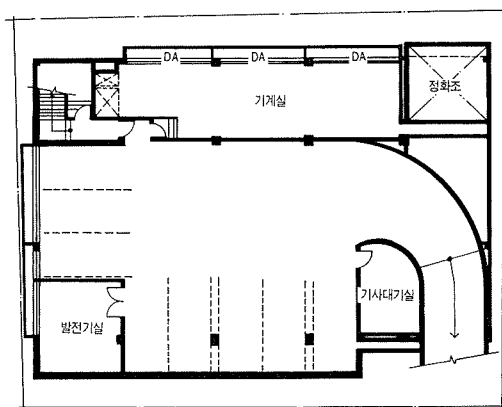


경남은행 아음동지점

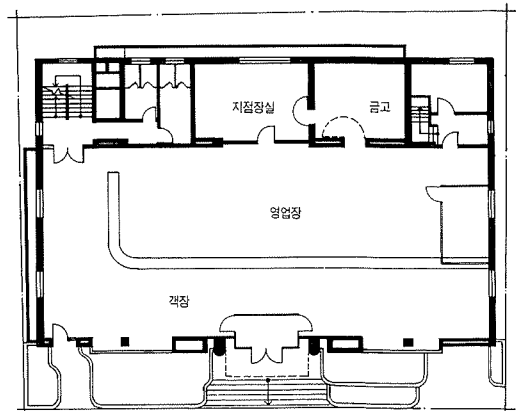
Kyungnam Bank, Yaeum - dong Branch

許正道 / 종합건축사사무소 서진 · 미래 · 온누리
Designed by Huh, Jung - Do

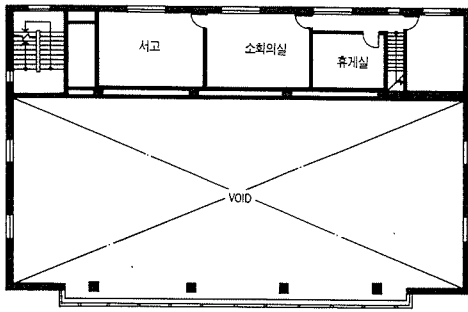
■
대지위치 / 경남 울산시 남구 아음동 453 - 5, 453 - 32번지
지역 · 지구 / 일반상업지역
대지면적 / 669.13m²
건축면적 / 452.69m²
연면적 / 1,452.97m²
건폐율 / 67.65%
용적률 / 150.21%
규모 / 지하 1층, 지상 3층
주차대수 / 옥내 7대



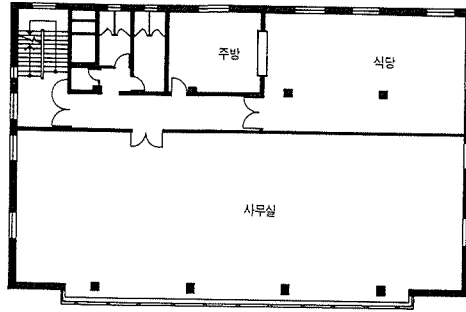
2



3



4



5

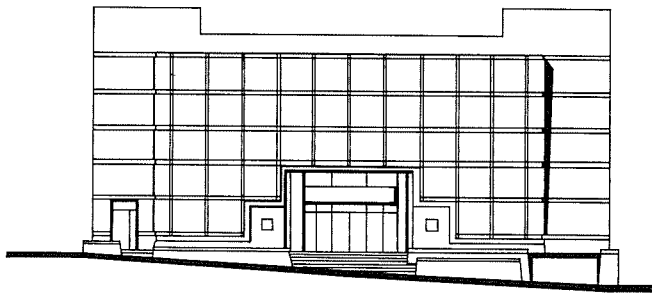
- 1 전경
- 2 지하층 평면도
- 3 배치 및 1층 평면도
- 4 중 2층 평면도
- 5 2층 평면도
- 6 1층 응접실
- 7 정면도
- 8 전면 상세
- 9 올려다 본 외벽상세 I
- 10 올려다 본 외벽상세 II
- 11 단면도



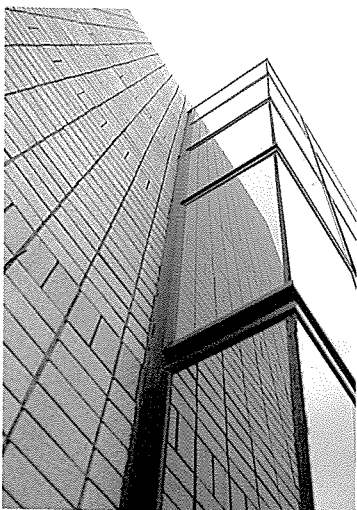
6



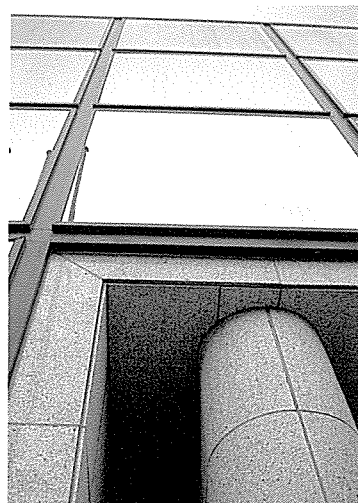
8



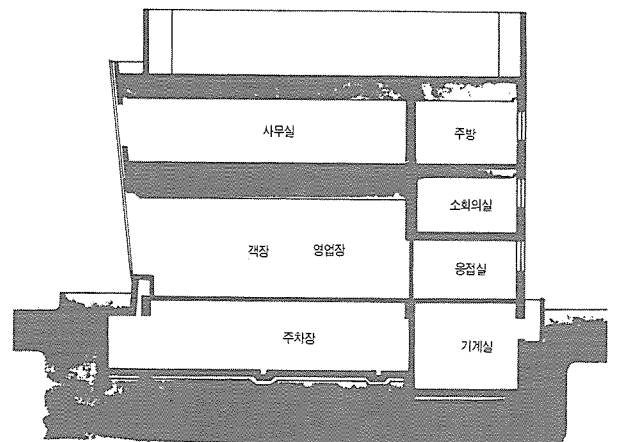
7



9



10



11