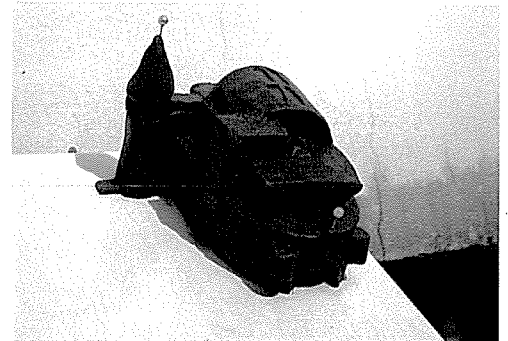
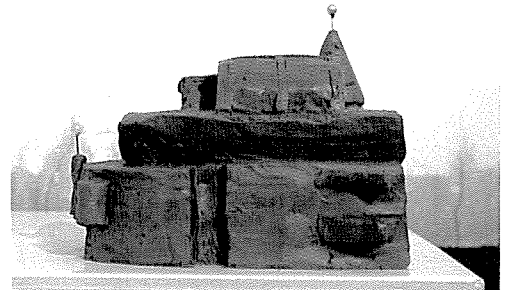
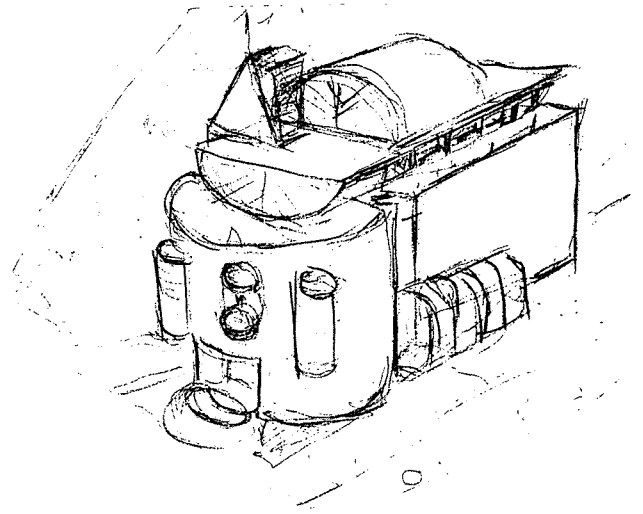


성남 K유치원

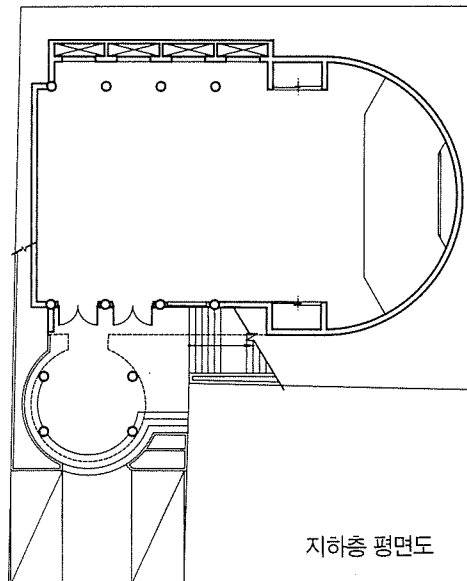
Sungnam K Kindergarten

PROCESS WORKS

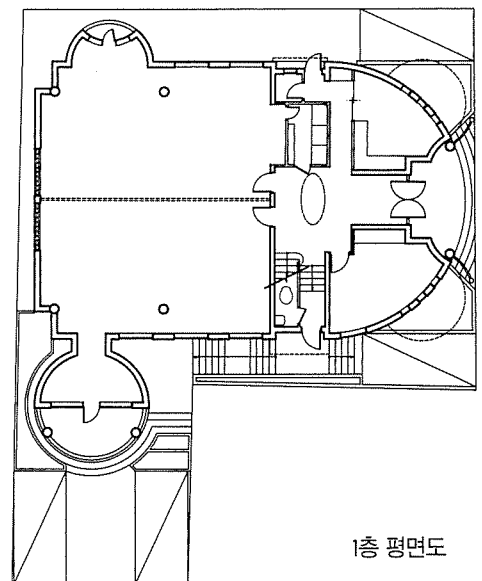
宋光燮 / 종합건축사사무소 환
Designed by Song, Kwang - Sub



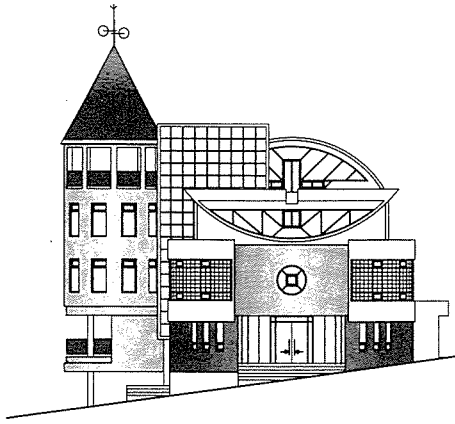
■
 대지위치 / 경기도 성남시 중원구 금광동
 3372 - 2, 3374
 대지면적 / 402m² (121.06 PY)
 건축면적 / 240.72m² (72.82 PY)
 연면적 / 967.28m² (292.60 PY)
 건축규모 / 지하 1층, 지상 3층
 건폐율 / 59.88%
 용적률 / 184.47%
 주차대수 / 4대



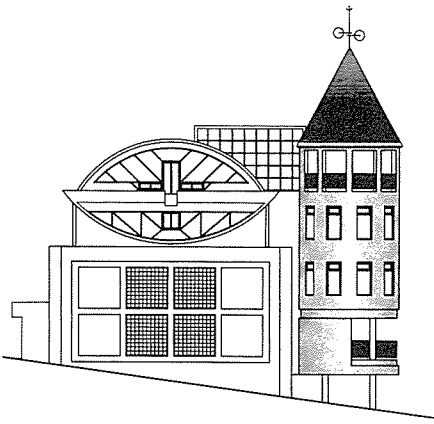
지하층 평면도



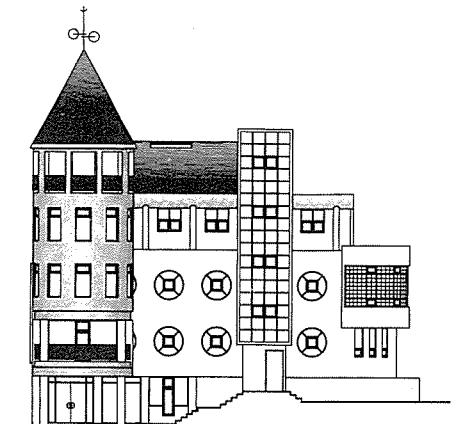
1층 평면도



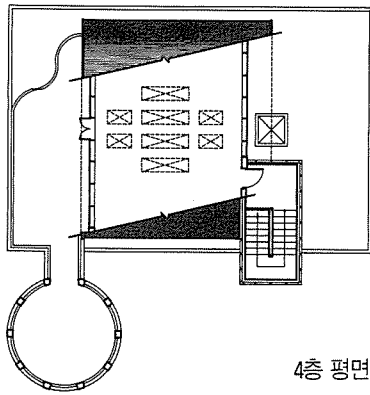
동측입면도



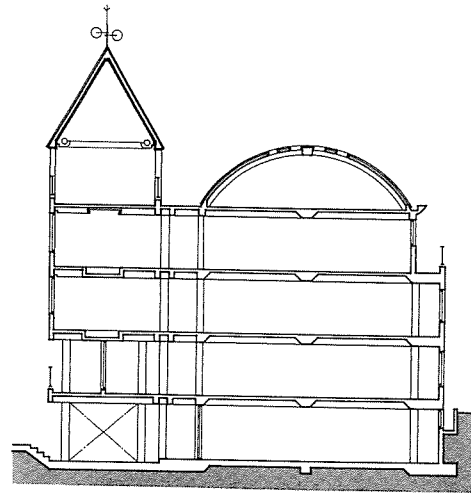
서측입면도



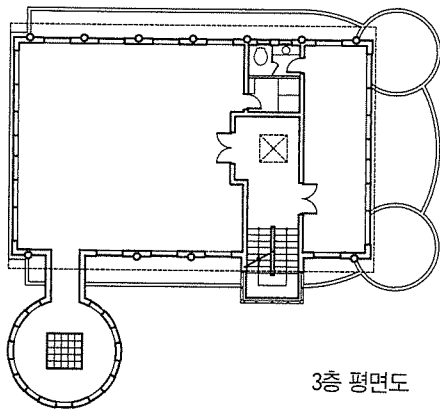
남측입면도



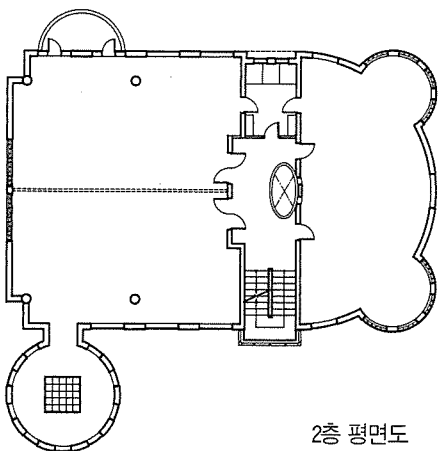
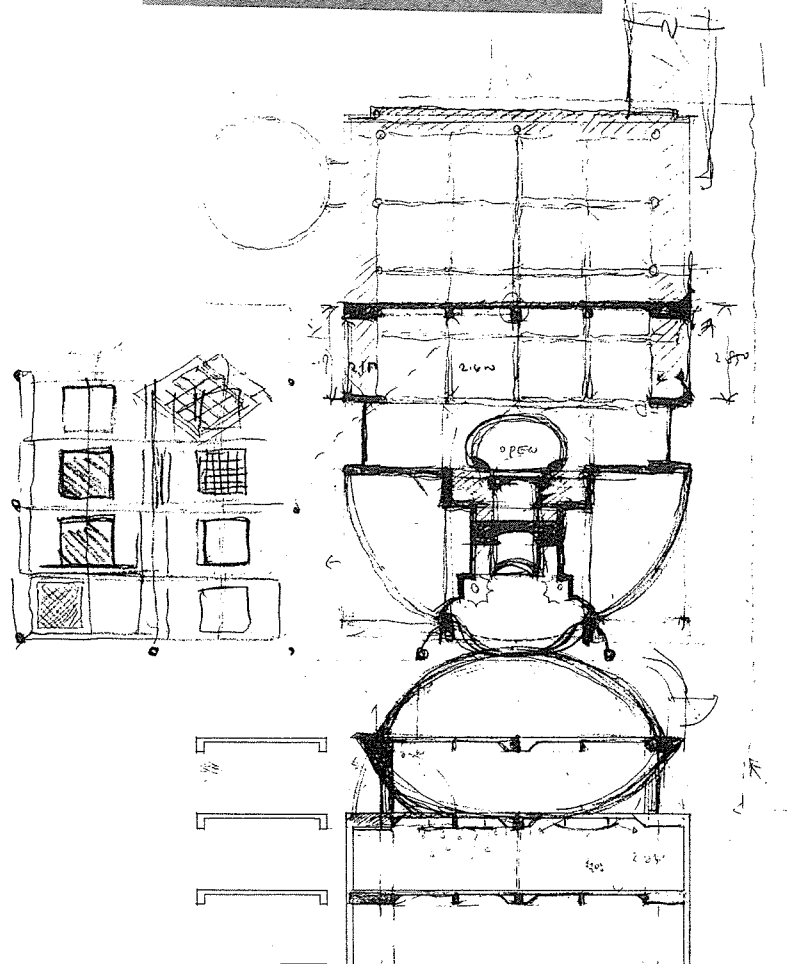
4층 평면도



단면도



3층 평면도



2층 평면도