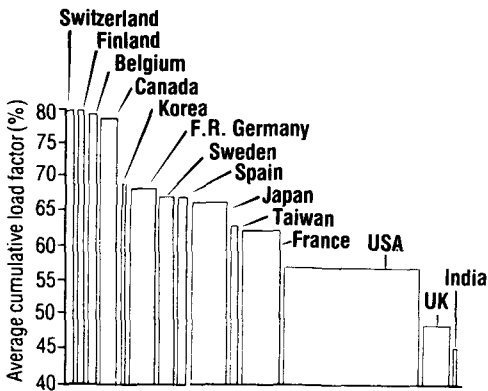
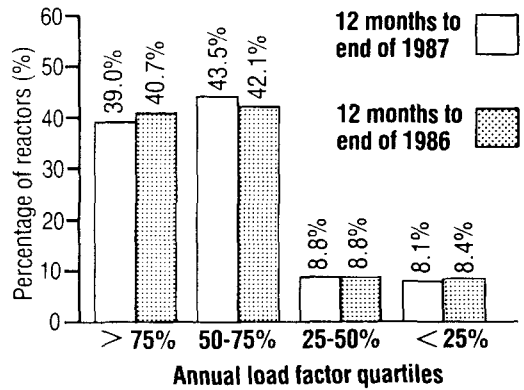


'87年度 世界原電의 運轉實績

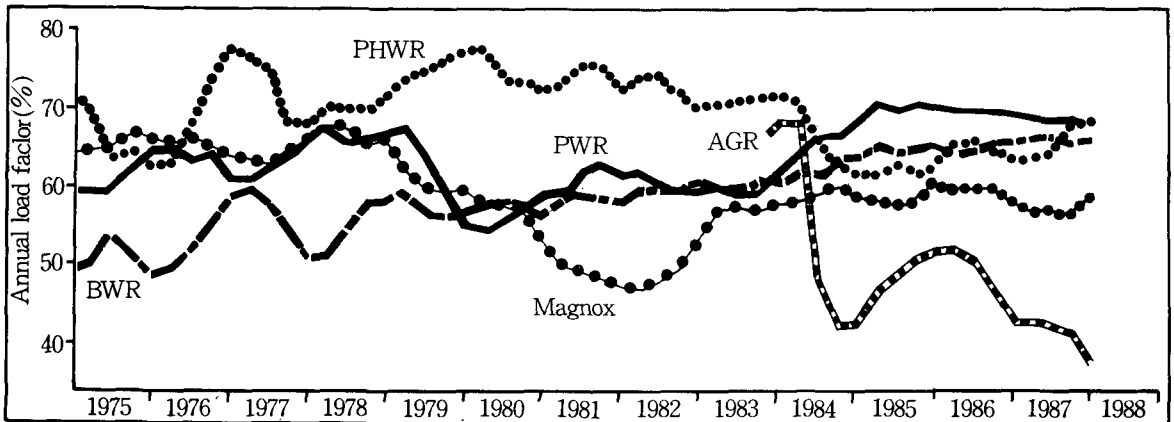
다음은 Nuclear Engineering International誌 6月號에 게재된 '87年度 世界 原子力發電所의 運轉實績이다. Comecon諸國을 제외한 150MWe出力 이상의 原子爐 327基, 270,521.8MWe의 시설용량을 대상으로 실시한 이번 調査에서는 運轉經驗이 2,897爐·年으로 나타났으며, 利用率을 原子爐型, 原子爐의 規模, 國家別로 分析하였다.



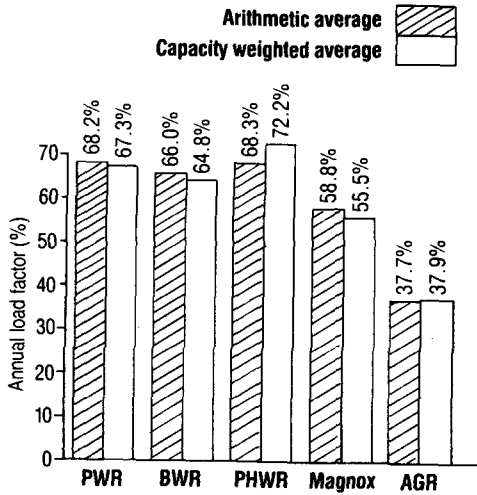
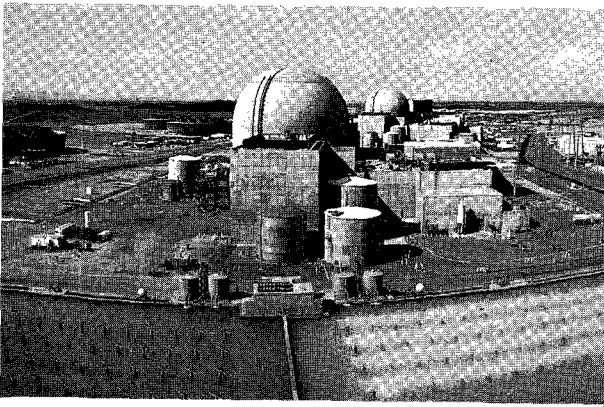
〈國家別 누계이용률 비교〉



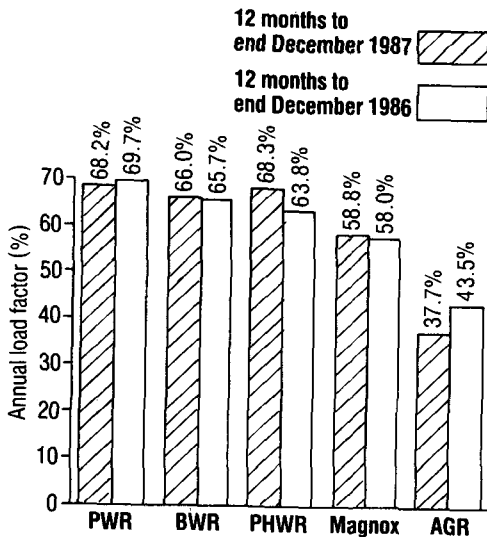
〈利用率別 原子爐의 比率〉



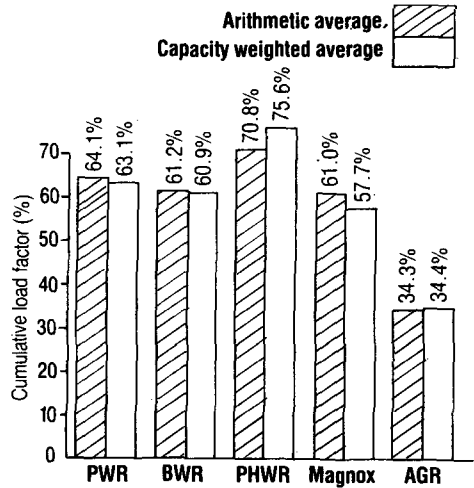
〈爐型別 年間평균이용률 추이〉



〈1987年度 年間이용률〉



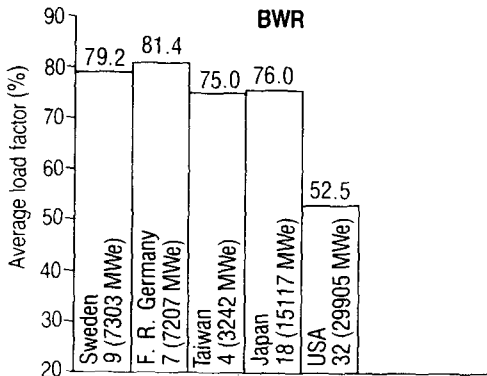
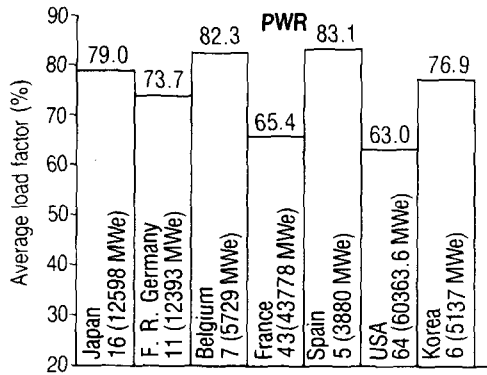
〈'86 및 '87年度 年間이용률 비교〉



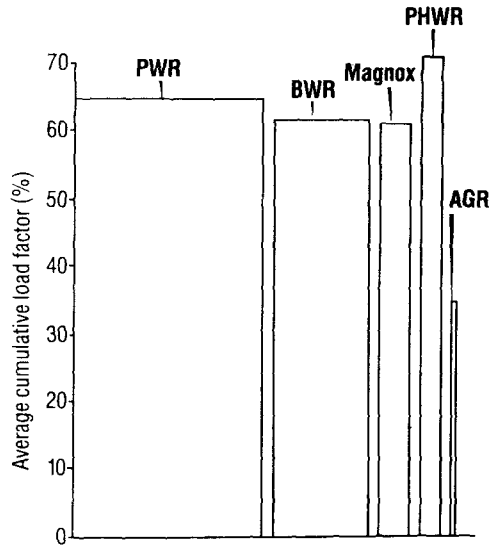
〈1987年末 현재 누계이용률〉

〈규모별 利用率 상위권 10基〉

Rank	1987 load factor, %	Type
Above 1000MWe		
K-Kariwa 1	99.6	B
Ohi 1	95.2	P
Philippsburg 2	90.4	P
Tihange 3	89.6	P
Susquehanna 2	88.2	B
Tsuruga 2	85.7	P
Grohnde	85.4	P
Diablo Canyon 1	85.1	P
Leibstadt	85.0	B
Fukushima 16	83.7	B
Over 600MWe and up to 1000MWe		
Hamaoka 2	98.1	B
Bruce 6	95.9	H
Isar 1	93.9	B
Almaraz 1	93.9	P
Tihange 1	92.4	P
Wolsung 1	92.3	H
TVO 2	92.3	B
Pt Lepreau	91.9	H
Millstone 2	91.3	P
TVO 1	90.9	B
150MWe and up to 600MWe		
Ikata 1	99.9	P
Pickering 7	96.8	H
Prairie Island 2	95.3	P
Hunterston A1	95.1	M
Kori 1	94.5	P
Loviisa 1	93.3	P
Loviisa 2	92.6	P
Paks 2	89.9	P
Paks 3	88.5	P
Pickering 6	88.3	H



〈國家別 1987年度 年間평균이용률 비교〉



〈爐型別 누계이용률 비교〉

〈爐型別 누계이용률 및 누계발전량〉

Reactor type	Average cumulative load factor (%)	Cumulative electricity generated (TWh)
PWR	64.1	6352.3
BWR	61.2	3139.7
PHWR	70.9	704.3
Magnox	61.0	822.0
AGR	34.4	166.5

〈國家別 운전실적〉

Country	No. of Units	Total MW (gross)	Reactor yrs.	Cumulative (lifetime) generation (TWh)	Av. cum. load factor (%)	1987 annual load factor (%)
Hungary	3	1320	9.1	29.57	84.5	86.1
Finland	4	2400	35.3	146.48	79.8	92.3
Switzerland	5	3079	63.1	212.95	79.8	84.6
Netherlands	1	480.9	174.0	48.15	78.8	66.3
Belgium	7	5729	54.8	261.1	78.8	82.3
Canada	17	11974	138.1	606.3	78.6	72.2
Korea	7	5815.7	27.7	119.80	68.6	79.1
FR Germany	19	19908	156.6	875.40	68.0	75.0
Sweden	12	10123	113.4	495.18	67.1	76.4
Spain	8	5815	72.7	222.66	67.0	79.7
Japan	36	28046	335.8	1266.93	66.1	76.3
Yugoslavia	1	664	75.0	23.71	65.2	77.3
Argentina	2	1015.2	18.3	46.60	65.2	67.0
Taiwan	6	5144	38.1	173.19	62.5	73.4
France	49	47360	347.5	1500.80	62.1	61.9
United States	98	90725.6	1055.2	4354.20	56.6	58.4
Great Britain	21	9653.7	304.3	768.10	48.2	51.8
South Africa	2	1930	6.3	23.56	45.6	40.9
India	6	1330	65.3	54.19	44.9	46.5
Italy	2	1164	32.9	53.89	41.8	3.7
Brazil	1	657	69	6.46	19.5	16.8