

咬 合

김흥복치과기공소

가

가

가

가

가 가

1) 저작근

가

가

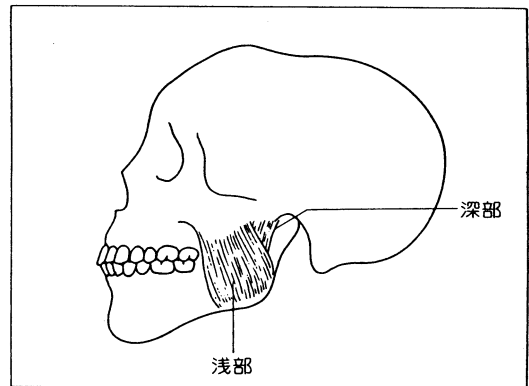
(1-1), (1-2),
(1-3), (1-4),
(1-5)

1. 咀嚼技能

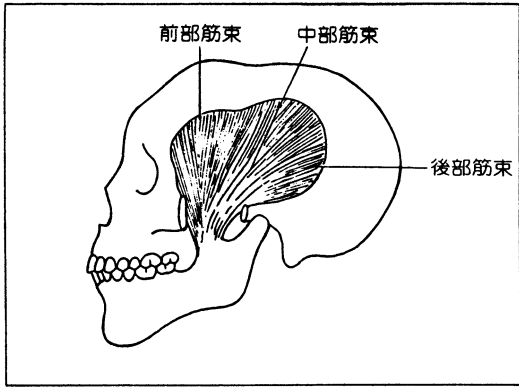
가

가

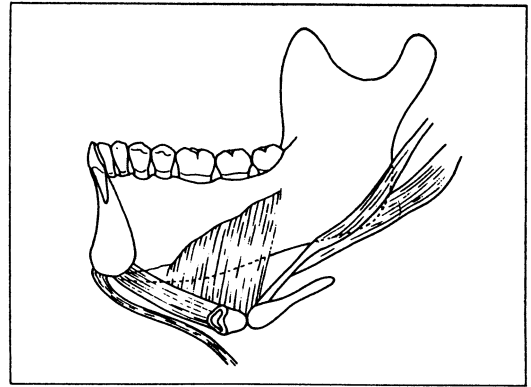
가



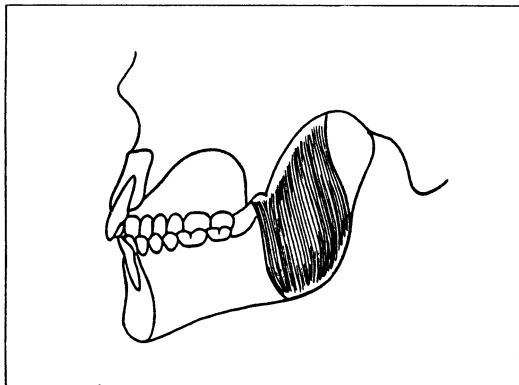
1-1.



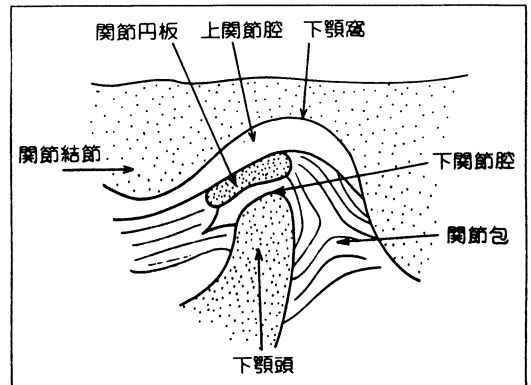
1-2.



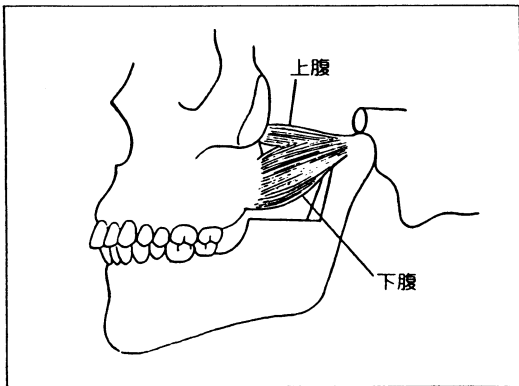
1-5.



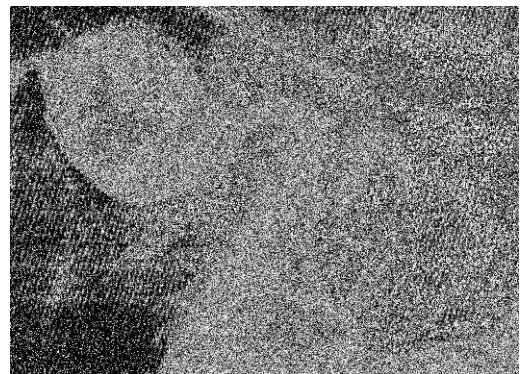
1-3.



1-6 a.



1-4.



1-6 b.

2) 악관절

가
가
(15~20mm, 8~10mm)

가

2. 하악의 운동

가
1

3

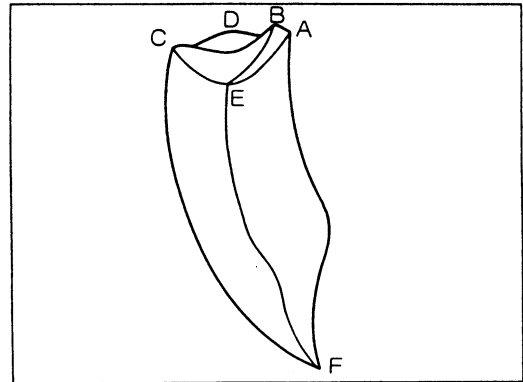
1162

Posselt

Posselt figure (1-9).



1-7.



1-9. Posselt figure

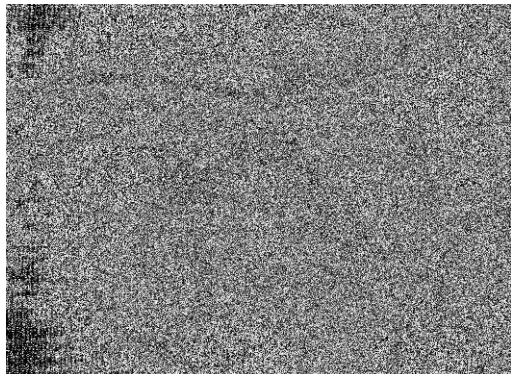
A: B: C:
D: E: F:

1) 하악의 기본운동

가

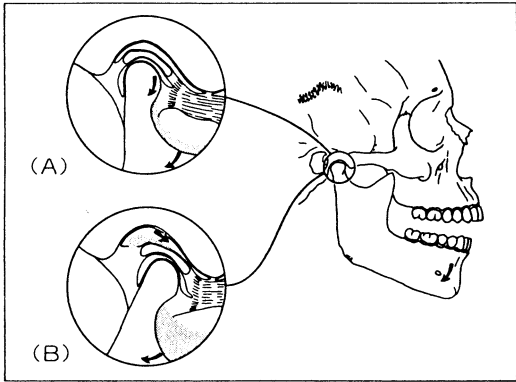
가

가
가

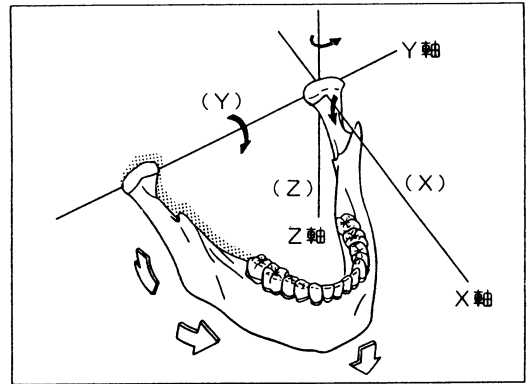


1-8.

(1-10).



1-10.
(A) (B)



1-11. X · Y · Z

3

가

X,Y,Z, 3

3

X

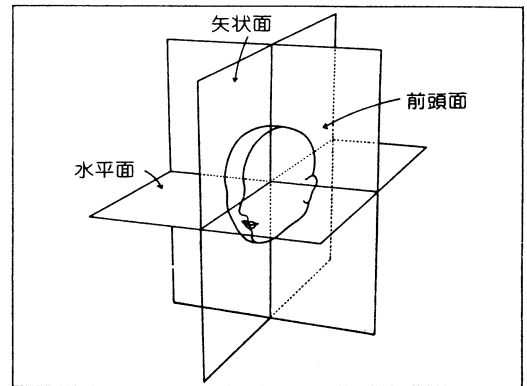
X

Y

Y

Z

(1-12).



1-12.

Z (1-11).

가
가 2 가
가 가

가
가 가

가 , Camper

가 . 1890
spee

Gysi

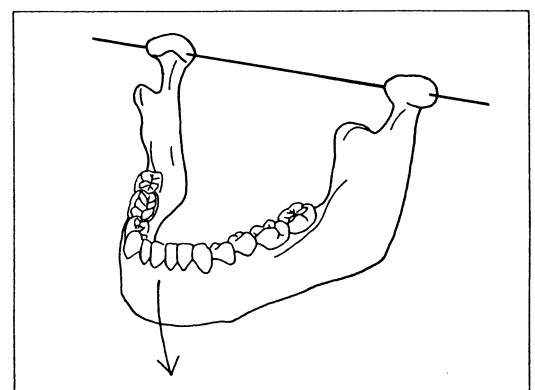
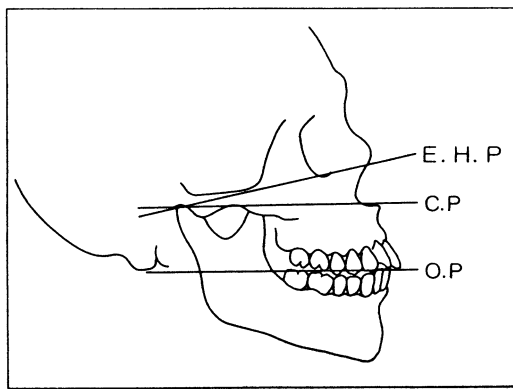
. spee ,

(1-13).

“ ”
Spee 가 가
가

가

가
() (1-14).



1-13. E.H.P :
C.P :
O.P :

1-14.

10~13. (1-15).

가

가

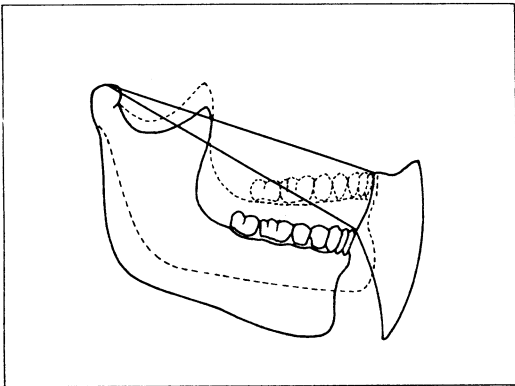
가

(1-16,17,18)

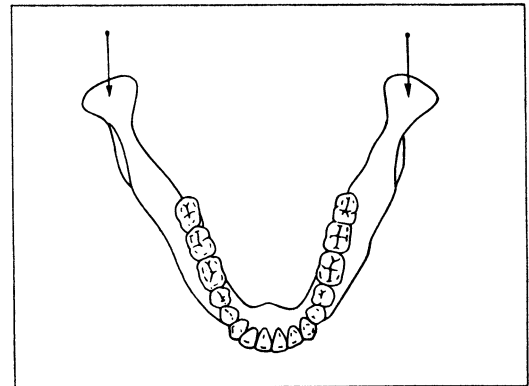
進
前方顆路

가

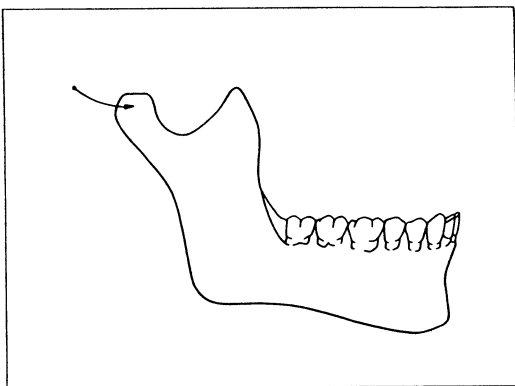
前



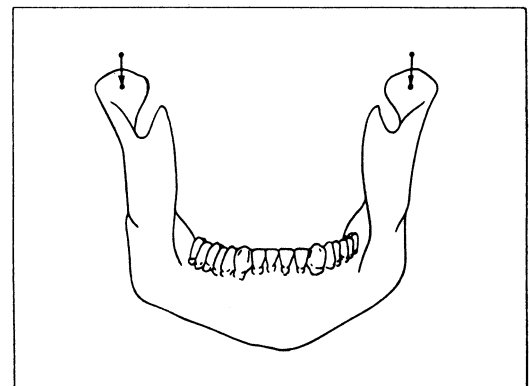
1-15. 10~13.



1-17. ()



1-16. ()



1-18. ()

(1-20).

(1-19), Gysi ,

5 ~ 55.

33.

Lundeen

25 ~ 75.

40.

가

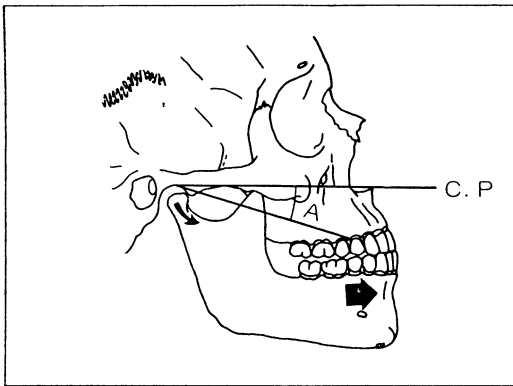
(1-21).

가

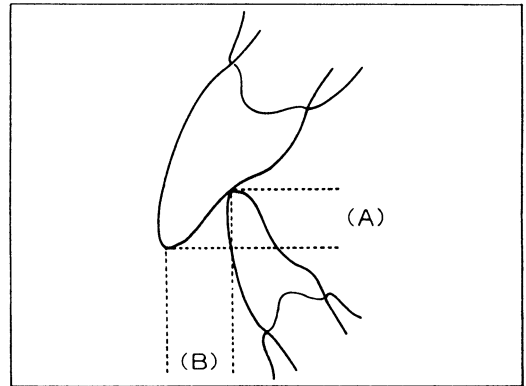
가

가

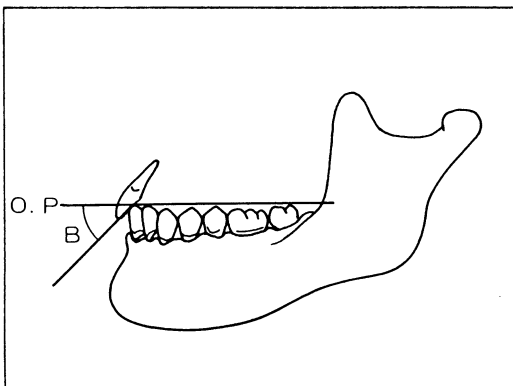
(1-22 ~ 25).



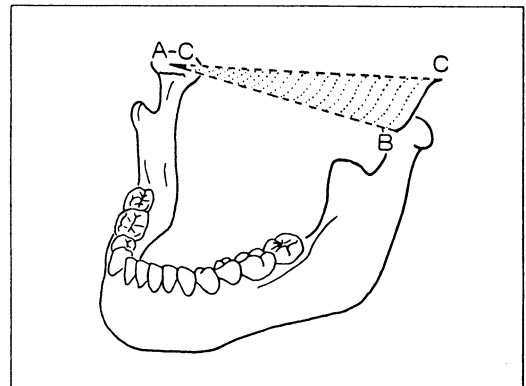
1-19. (A) (C.P)



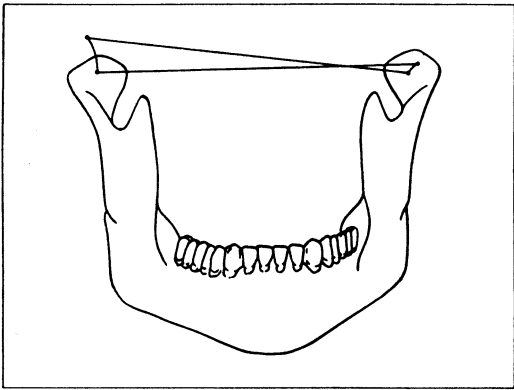
1-21. (A) (B)



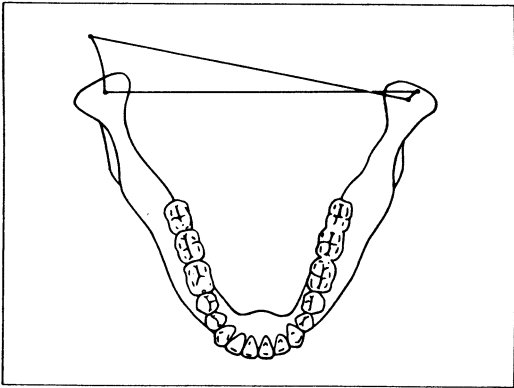
1-20. (B) (O.P)



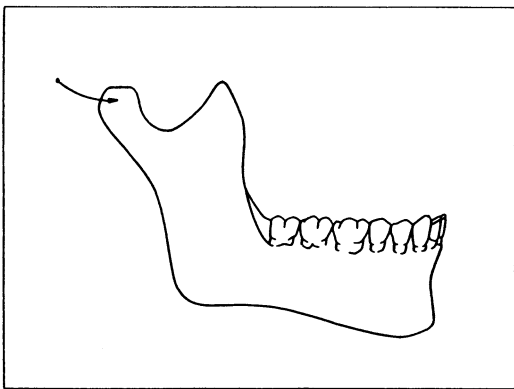
1-22.



1-23. ()



1-24. ()



1-25. ()

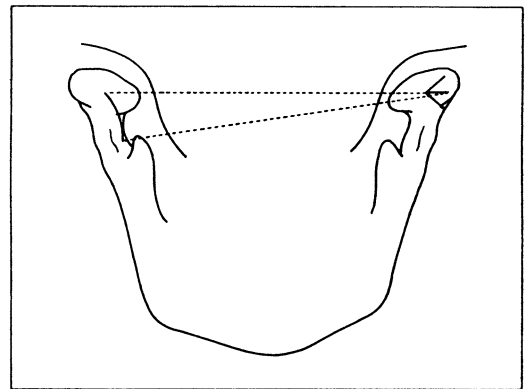
()

1.0mm
가
가 (1-22 ~ 25).

가

가

(1-26).



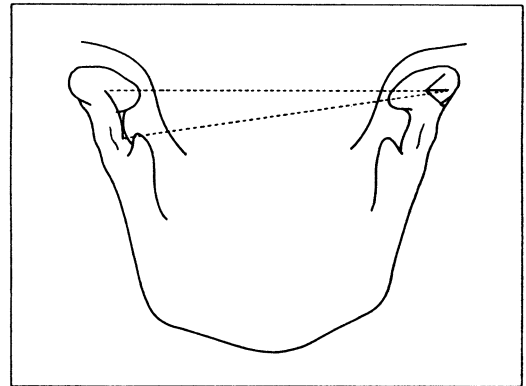
1-26.

()

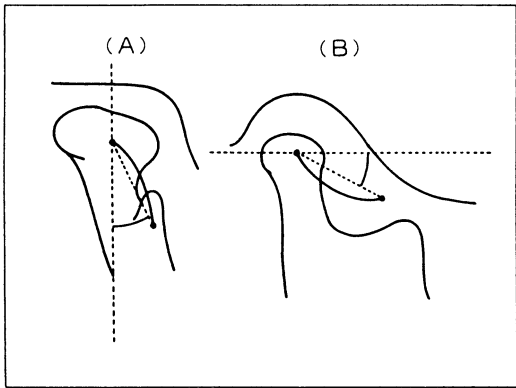
(1-27)

()

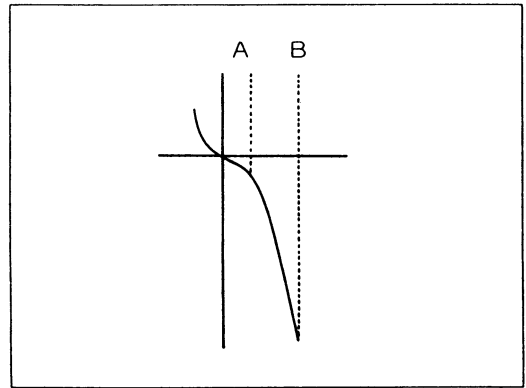
(1-28).



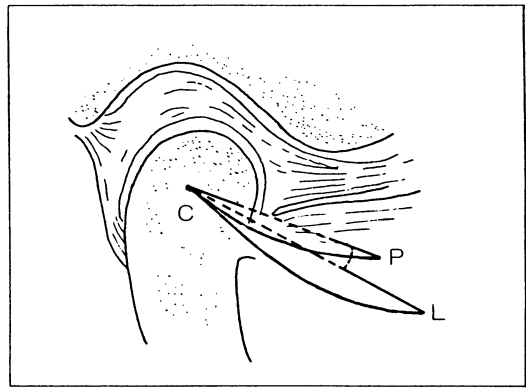
1-27.



1-28.
(A) (B)



1-29. A :
B :



1-30.

가 ,
가 2 ,
가 ,
가

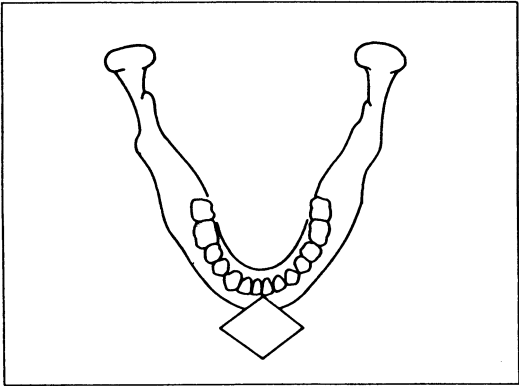
1973 Lundeen ,
7.5. ,
가

1-30) 5. , (,
가 (

1-28-B).
45~50. 가 .
가 ,
가

(1-30).

가
Gysi 100~140.
120. (1-31).



1-31.