

□ 계획작품

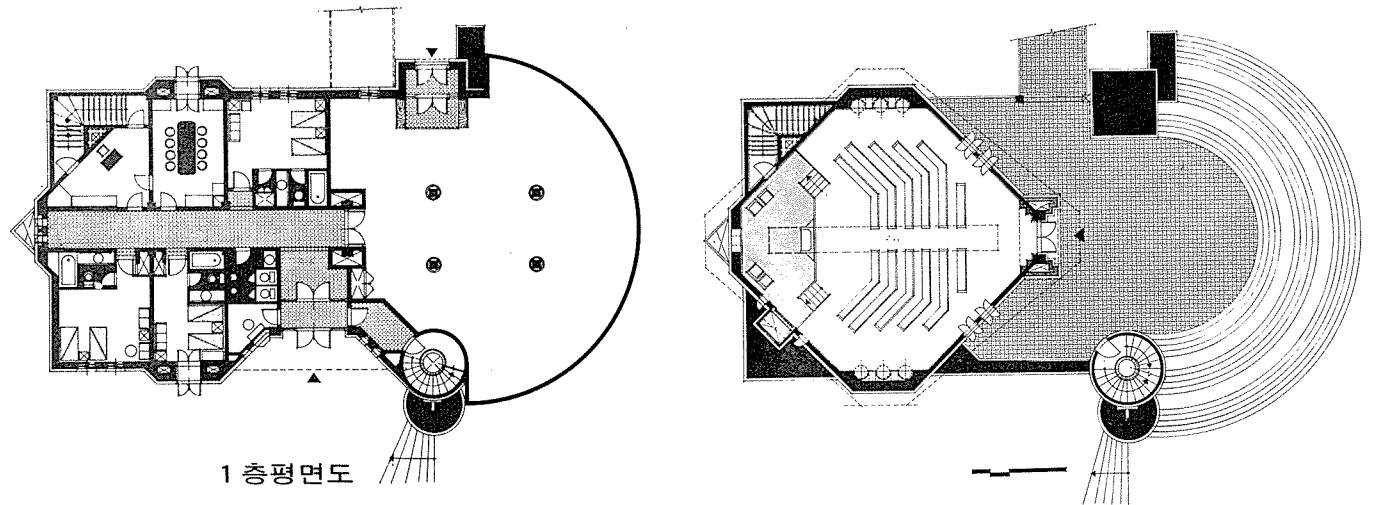
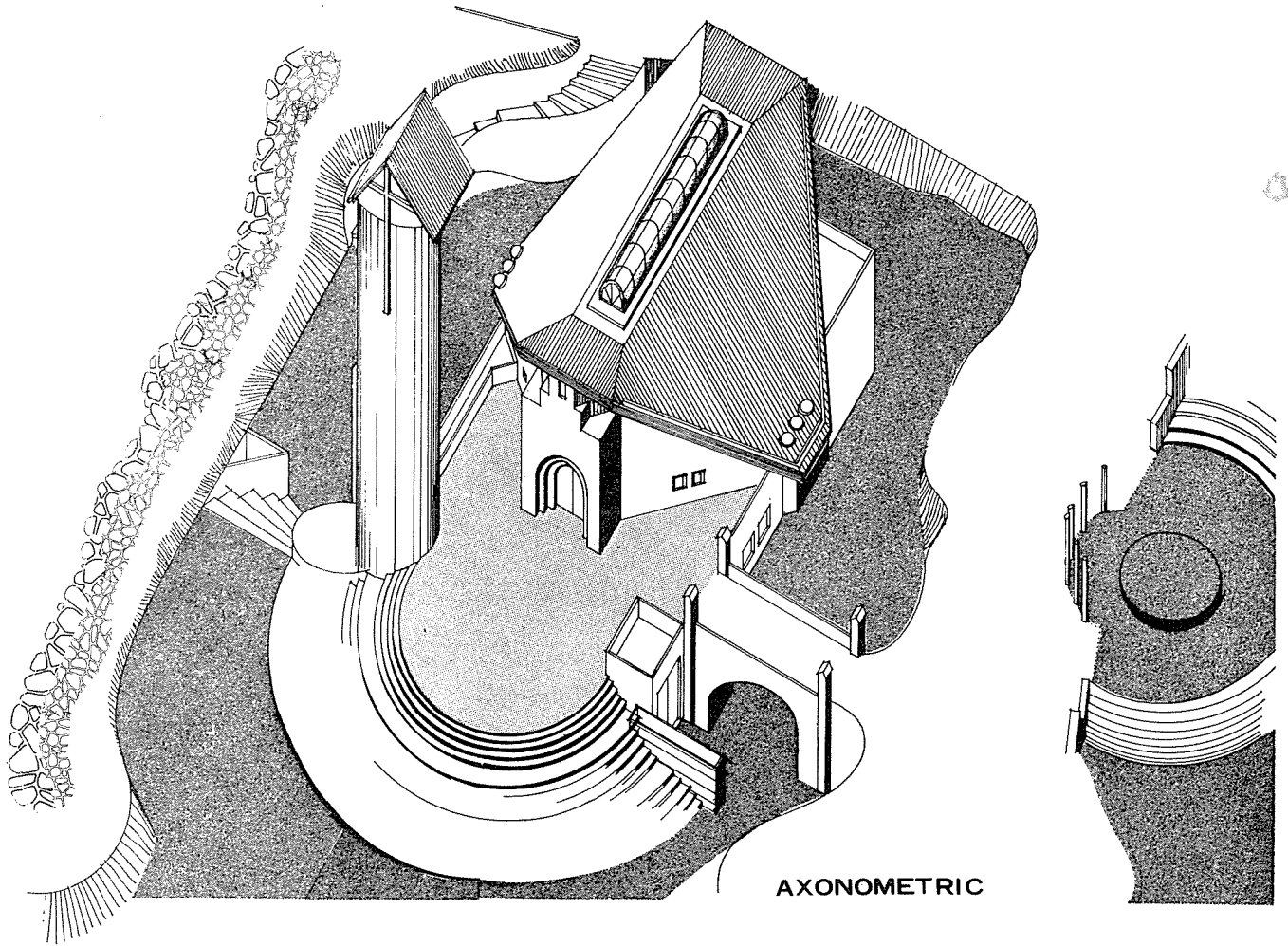
학봉교회

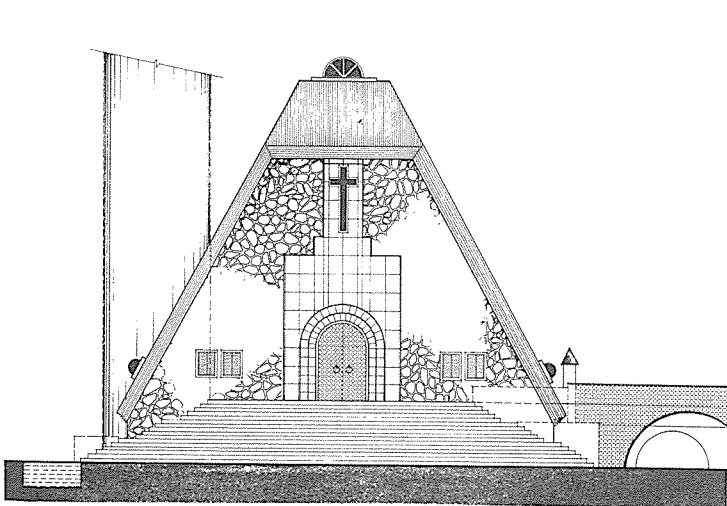
HAK BONG CHURCH

金 琪 碩 / 아람건축연구소

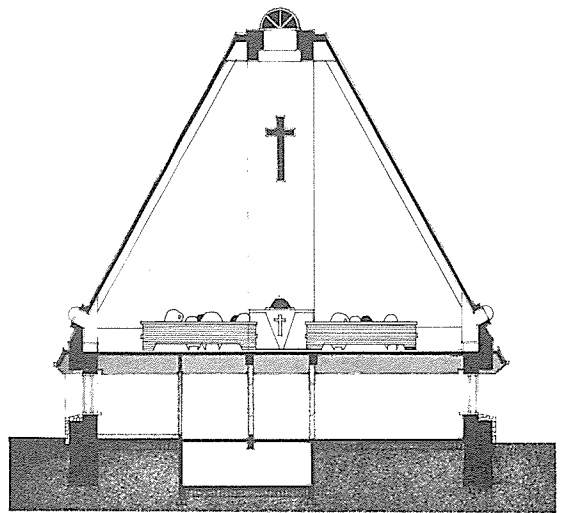
Kim, Ki Sok / Aram Architects Atelier

● 소재지 / 충남 공주군 반포면 학봉리 ● 대지면적 / 2,855㎡ ● 연면적 / 675.23㎡ ● 구조 / 철근콘크리트 라멘조 ● 마감재료 / 벽체 - 현장채취 자연석 · 지붕 - 백색자기타일

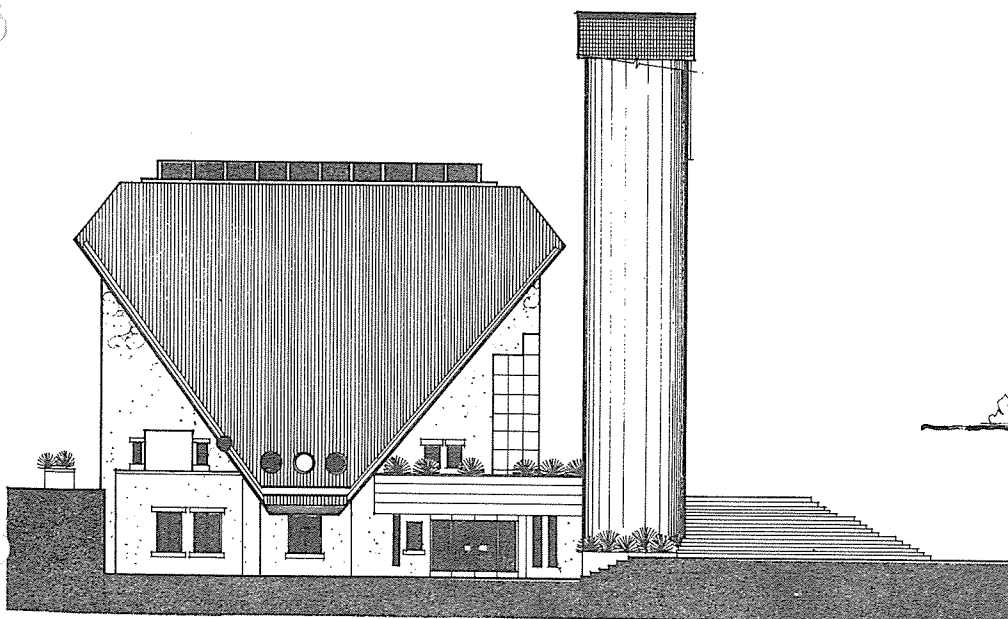




정면도



횡단면도



남측면도