

“ODDO”S Hinge Action Clasp Techniques

마산치과기공소

I. 서론

ODDO Hinge Action Clasp
Georgetown Maryland
Vincent J. Odio

Ticonium
Casting clasp undercut
0.030 ”
ODDO Hinge action Clasp
Close undercut clasp

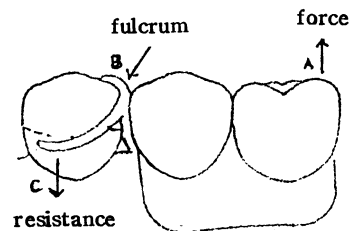
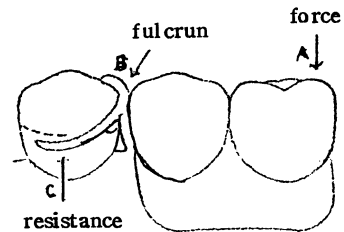
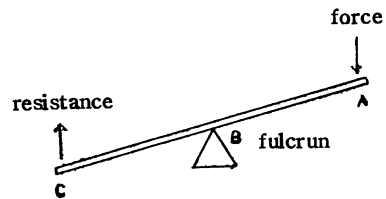
Wrought wire clasp
0.010 “ 0.020 ”
가
Hinge Open Teeth

- ubdercut
- 2) Oddo Hinge Action Clasp Hinge
Open Close
Tissue undercut Relief
Block out 가
- 3) Interproximal Space undercut
Retention
- 4) Labial Bar
- 5) Survey-line 가
- 6) 가

II. 본론

Oddo Hinge Action Clasp Partial
Denture Insertion Stress
가

Proximal Space
Oddo Hinge Action Clasp
Clasp
Open close
가

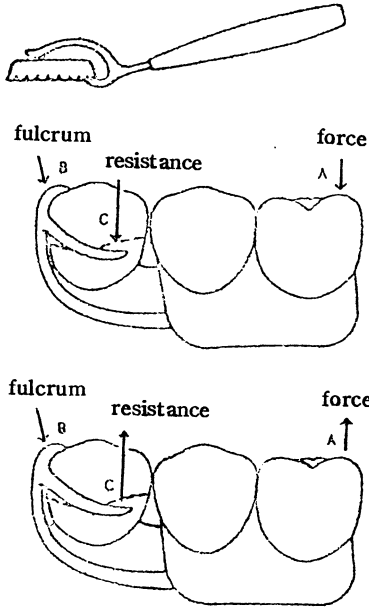


III. 특징 및 적응범위

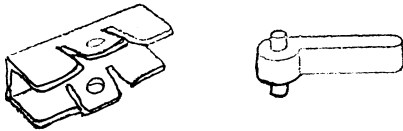
- 1) Clasp

1.

1 2 clasp
 Stress
 3 Oddo Hinge Action
 clasp Male Female



2.

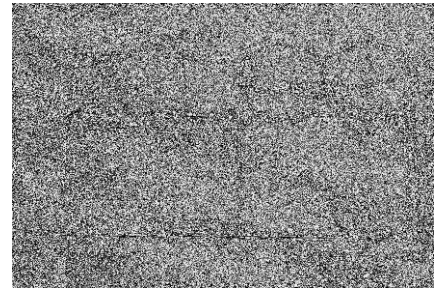


2.

- 2) Master Model Duplication
- 3) Waxing up Hinge Attachment pattern Male part
- 4) Spruing

5, 6, 7, 8
 Waxing up

- 5) Female Stainless steel
- 6) 10 Female Spring Action Acrylic Resin Packing
- 7) Resin polishing



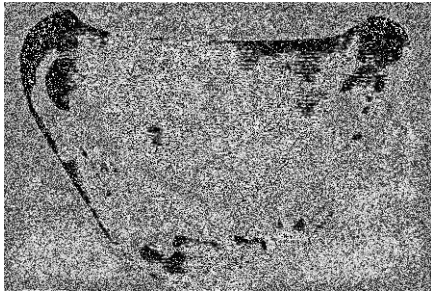
4. Clasp Arm gauge Relieve 24 26

IV. 기공실 작업과정

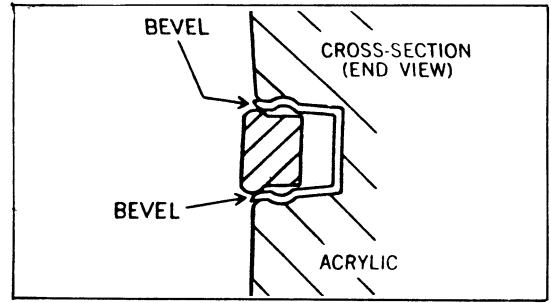
- 1) Master Stone Model 4
- Oddo Hinge Action Clasp Arm
- 24 26 gauge Sheet
- wax 가 Relief
- Tissue Undercut
- Block-out



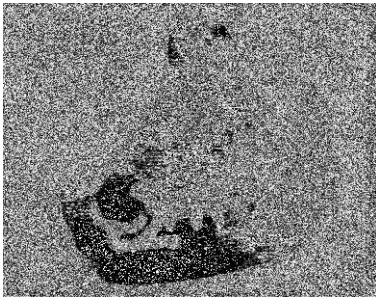
5. Refractory Cast



6. Waxing up Spruing



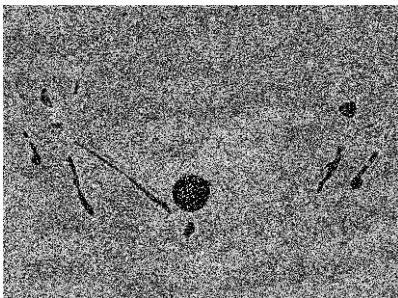
10. Clasp가 Open Close Male Female



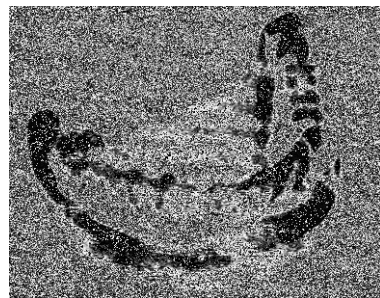
7. Clasp Male



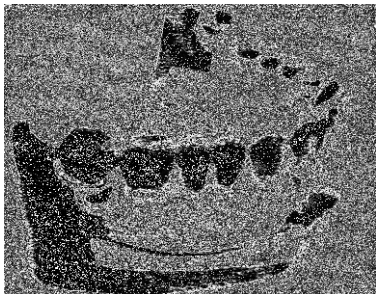
11. Clasp가 Open



8. Male Part Partial Frame Hinge Clasp



12. Clasp가 Close Partial Denture



9. Female

V. 결 론

가 Partial Denture 가

Hinge Action Clasp가 가

Oddo