

New Taxa of Korean Flora(4)

Lee, Yong No

(Department of Biology, Ewha Womans University, Seoul)

韓國의 新分類群(新種과 新品種) 植物에 對하여(4)

李 永 魯

(梨花女子大學校 文理大學 生物學科)

ABSTRACT

This paper is proposed to describe three new species and four varieties from Cheju Island to central part of Korea in Southern Korea. The new plant taxa are as follows: *Clematis taeguensis* Y. Lee, sp. nov.; *Prunus linearipetalus* Y. Lee, sp. nov.; *Vicia linearifolia* Y. Lee, sp. nov.; *Clematis brachyura* Maxim. var. *hexasepala* Y. Lee, var. nov.; *Ranunculus quelpaertensis* (Lev.) Nakai var. *albiflorus* Y. Lee, var. nov.; *Aconitum napiforme* Lev. et Vaniot var. *albiflorum* Y. Lee, var. nov.; *Ajuga decumbens* Thunb. var. *rosa* Y. Lee, var. nov.

Clematis taeguensis Y. Lee, sp. nov. 대구오아리(신칭)

Arbor ascendens, caulis rigidus, 1.5 m longa, 3 mm lata, glabrescens. Folia oppositi, bipinnati-compositus, 3~13 foliolum cum petiola. Trifoliola digitati in 2~3 cm longi-communis petiola, terminalifoliola plerumque grandis, quam lateralifoliolatae oblongata, ovatis, apex acuminatus, glabrescens, 5 cm longa, 1.4 cm lata, cum 3 prominens et 2 levis lateralis-venas, pubescens in vena superifolia. Flos paniculatus, albidus, sepala 4, lanceolatus, oblongatus, ca. 16 mm longa, 4.5 mm lata. Pistillum ca. 12.5 mm longa, fuscum pubescentum, multi-stamina, 8 mm longa, anthera 2 mm longa. Fructus achenius, ca. 5 mm longa, ca. 3.2 mm lata, laterali-comprimus. Stylus 3 cm longa cum fusca longipubescentia(Plate 1).

Hab. Stream rocksides, Bommuldong, Taegu City, Korea, Sept. 17, 1982, collected by Yong No Lee.

Type in Herbarium, Ewha Womans University, Seoul, Korea.

Woody climbers, stem rigid, 1.5 m long, 3 mm across, glabrous. Leaves opposite, bipinnated compound, 3~13 leaflets, petioled. 3 leaflets digitate on 2~3 cm long common petiole, terminal leaflets usually larger than the lateral leaflets, oblong, ovate, apex

acuminate, glabrous, 5 cm long, 1.4 cm wide, with 3 prominent veins and 2 insignificant lateral veins, hairs on veins of abaxial surface. Flowers in panicle, 4 merous, white, sepals lanceolate, oblong, 16 mm long, 4.5 mm wide, pistils about 12, 5 mm long, brown hairs, stamens numerous, 8 mm long, anther 2 mm long. Fruits achenes 5 mm long, 3.2 mm wide, laterally compressed,¹ style 3 cm long with brown hairs.

Prunus linearipetalus Y. Lee, sp. nov. 별벗나무(신칭)

Arbor deciduus, petiola cum 2-glandulae, 1.5~2 cm longa, partus pubescentus et superficialis pilosus. Lamina oviformara, 5.6~8.6 cm longa, 3.0~4.5 cm lata, apex cereiformis, margo dupliserratus. Flos 2~3 in corymosos, axis 12 mm longa, pedicellus 2 cm longa, glabrescens, bractea plerumque 3, oblongispatuliformis, 6 mm longa, 1.5~3 mm lata, marginis ciliotis. Calyx-tubus 5 mm longa, glabrescens. Sepalum 5, 3 mm longa, reflexus. Petala 5, paene alba, lineariformis, 10 mm longa, 5 mm lata, lateri-marginis inflexus, apex penitus, retusus. Stamina ca. 25, pistillum 1, ca. 10 mm longa, stylus glabrescens et longius quam stamina. Involucrum ovatus, marginis ciliatis et rutatis viridis purpureus. Fructus drupaceus, paene globus, 5 mm lata. (Plate 2 A).

Hab. Changdok Palace, Seoul, Korea, April 19, 1982, collected by Yong No Lee and Chai Yong Ok.

Type in Herbarium, Ewha Womans University, Seoul, Korea.

Deciduous trees. Leaf petiole with two glands, 1.5~2 cm long, when young pubescent, leaf blade egg-shaped, tapering tip, double serrate margins, 5.6~8.6 cm long, 3.0~4.5 cm wide and leaf surface sparsely pilose. Flower 2~3 in corymb, floral axis 12 mm long. peduncle 2 cm long, glabrous, bract usually 3, oblong spatular-shaped, 6 mm long, 1.5~3 mm wide, ciliate margins. Calyx tube 5 mm long, glabrous. Sepal 5, 3 mm long recurved. Petal almost white linear, 5, 10 mm long, 5 mm wide, the margin laterally inrolled to upper surface, the apex deeply retuse. Stamen about 25, pistil 1, 10 mm long, style glabrous, longer than the stamen. Involucle ovate, the margins ciliate, reddish-green purple. Fruit drupe almost round 5 mm across.

Vicia linearifolia Y. Lee, sp. nov. 계방나비나물(신칭)

Perennis herba, caespitose, 40 cm alta, 1.5 mm lata. Folia cum bifoliola, foliola linearilanceolatus, 8.5 cm longa, 9 mm lata, infrafoliola leuco-viridis, superiorifoliola viridis, marginis, marginis minutus serrati. Stipula 2, lanceolatus, 7 mm longa, 1.5 mm lata, acuminatus apex. Flos albidus in racemosi, papilionaceus, calyx 5 brevidentatus. Vexillum ca. 12 mm longa, 5 mm lata. Alae ca. 10 mm longa, auriculae ca. 10 mm longa. Pistillum ca. 13 mm longa, flexum, stylus pubescens, stamina diadelphus, 13 mm longa. (Plate 2 B,C).

Hab. Mt. Koebang, Kangwon Province, July 21, 1981, collected by Yong No Lee &

Chai Yong Ok.

Type in Herbarium, Ewha Womans University.

Perennial, stem tufted, 40 cm tall, 1.5 mm across. Leaf compound with two leaflets, leaflets lineari-lanceolate, 8.5 cm long, 9 mm wide, whitish green abaxial surface, green adaxial, minutely serrate margins, stipules two, lanceolate, acuminate apex, 7 mm long, 1.5 mm wide. Flowers white in raceme, butterfly-shaped, calyx teeth 5, short, standard 12 mm long, 5 mm wide, wing 10 mm long, keel 10 mm long, pistil 13 mm long, curved, style hairy, stamen diadelphous, 13 mm long.

Clematis brachyura Maxim. var. *hexasepala* Y. Lee, var. nov. 조령으아리(신칭)

Var. affinis *Clematis brachyura* Maxim. sed *hexasepala* flos plantae.

Hab. Choryong, Chungbuk Province, Korea, June 10, 1974, collected by Yong No Lee.

Type in Herbarium, Ewha Womans University.

Ranunculus quelpaertensis(Lev.) Nakai var. *albiflorus* Y. Lee var. nov.

흰왜젓가락나들(신칭)

Var. affinis *Ranunculus quelpaertensis*(Lev.) Nakai sed *albiflorus* flos plantae.

Hab. Sokwipo, Cheju Island, June 6, 1981, collected by Yong No Lee.

Type in Herbarium, Ewha Womans University.

Aconitum napiforme Lev. et Vaniot var. *albiflorum* Y. Lee, var. nov.

흰한라들쩌귀(신칭)

Var. affinis *Aconitum napiforme* Lev. et Vaniot sed *albiflorum* flos plantae.

Hab. 1,100 m above sea level side of west Cheju Island. Sept. 24, 1982, collected by Yong No Lee.

Type in Herbarium, Ewha Womans University.

Ajuga decumbens Thunb. var. *rosa* Y. Lee, var. nov. 내장금난초(신칭)

Var. affinis *Ajuga decumbens* Thunb. sed *rosa* flos plantae.

Hab. Mount Naechang, Chonbuk Province, Korea. May 8, 1982, collected by Yong No Lee.

Type in Herbarium, Ewha Womans University.

摘 要

韓國産 新分類群 植物에 對하여 3新種과 4變種을 다음과 같이 발표하는 바이다.

Clematis taeguensis Y. Lee 태구으아리; *Prunus linearipetalus* Y. Lee 별벗나무; *Vicia linearifolia*

Y. Lee 계방나비나물; *Clematis brachyura* Maxim. var. *hexasepala* Y. Lee 조령으아리; *Ranunculus quelpaertensis*(Lev.) Nakai var. *albiflorus* Y. Lee 흰색갯가락나물; *Aconitum napiforme* Lev. et Vaniot var. *albiflorum* Y. Lee 흰한라돌피귀; *Ajuga decumbens* Thunb. var. *rosa* Y. Lee 내장금난초.

(1982. 12. 11. 接受)

PLATE 1

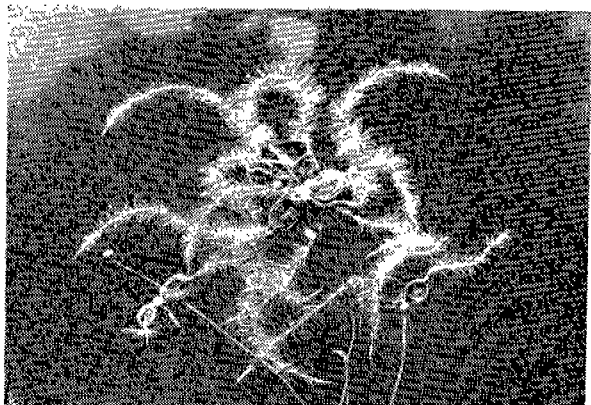
A



B



C



B-a. stamens and pistils
b. sepal

Clematis taeguensis Y. Lee

A. leaves, C. fruits

PLATE 2

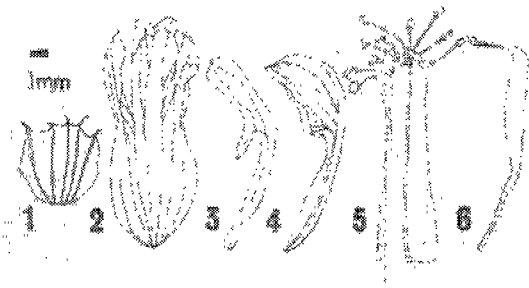
A



B



C



A. *Prunus linearipetalus* Y. Lee

B and C. *Vicia linearifolia* Y. Lee

1. calyx, 2. standard, 3. wing, 4. keel, 5. stamens, 6. pistil.