

Metal Bond porcelain crown 제작과정에서 color에 영향을 미치는 요인에 관한 연구

Ceramco Porcelain을 중심으로

대전보건전문대학 치기공과교수

1. 서론

Porcelain
Fauchard 18

20

가

가

metal , opaque porcelain
, body porcelain enRP, incisal

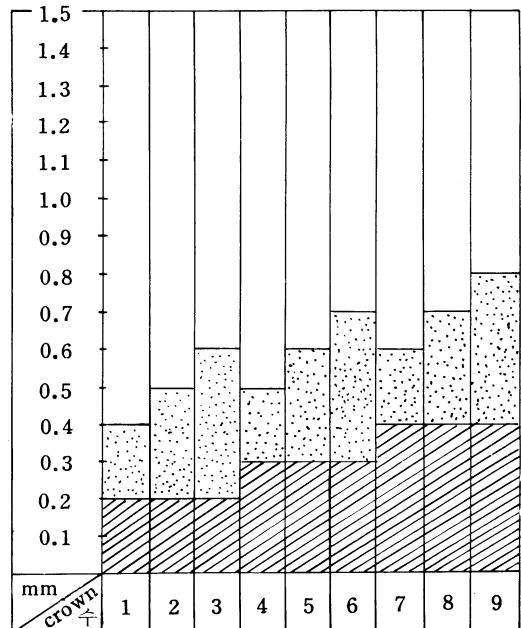
A. 실험재료

Vera Bond Metal, Opaque Porcelain, Gingival porcelain, Incisal Porcelain, Glaze. (Ceramco.Inc)
Porcelain furnace, Support tray. (NEY Mark)
Serrated spatula, knife,
Glass Spoid , Tissue paper or
Gauze, Pincet

B. 방법

1 Metal Bond Porcelain Crown 9
(Table. 1).

Table 1. 1



Metal의 두께
 Opaque porcelain 층의 두께
 Body porcelain 층의 두께

1. Metal

casting

Sand blaster
Vera disk Ultra
0.2mm, 0.3mm, 0.4mm

thin disk
3

2. opaque porcelain

opaque porcelain cream

cervical

tissue paper (Fig. 1)

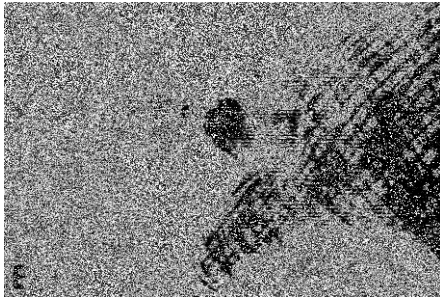


Fig 1.

porcelain
furnace

), 1,200 furnace 1750
, 1,850
0.2mm, 0.3mm, 0.4mm
(Table 2)

opaque
1,200
(5

3. Gingival porcelain Incisal porcelain

Gingival porcelain Incisal porcelain

Table 2 . Gingival porcelain
mixing slab cream 가

paper lingual gauze tissue
labial

20 ~ 30%

Table 2. Suggested Blends for ceramco vacuum fired porcelain new hue shade guide

Shade	Porcelain gingival	Incisal	Opaque
61	61	(3) 31 & (1) 61	61
62	62	(2) 31 & (1) 62	62
65	65	(2) 31 & (1) 65	65
66	66	(2) 31 & (1) 66	66
60	60	(2) 31 & (1) 60	60
67	67	(3) 31 (1) 32 & (2) 67	67
68	68	(3) 31 (1) 32 & (2) 68	68
69	69	(3) 31 (1) 32 & (2) 69	69
77	77	(3) 31 (1) 32 & (1) 77	77
78	78	(1) 31 (1) 32 & (1) 78	78
81	81	(1) 31 (2) 32 & (1) 81	81
87	87	(1) 31 (2) 32 & (1) 87	87

Figures in parentheses are parts by weight on volume .

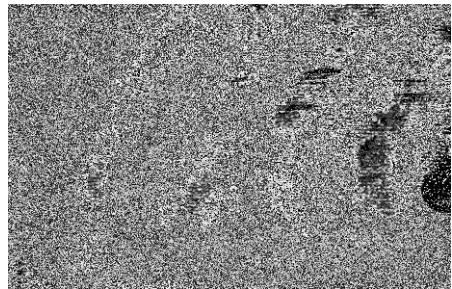


Fig 2.

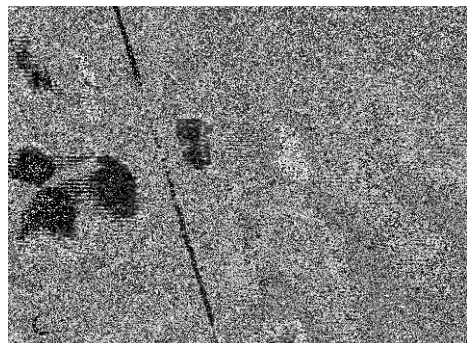


Fig 3.

(2) incisal porcelain
 (3)
 가
 (5) 1,200 furnace 1,700
 1800
 , incisal porcelain ½ ¼

가
 1200 ~ 1800
 1200 ~ 1700
 1700 ~ 1800
 가
 Porcelain
 Porcelain

4.
 1 75 ~ 100
 26 ~ 29inch

Incisal porcelain
 ½ crown ¼
 crown
 가

III. 성적 및 고찰

0.3mm가
 0.2mm 가
 , 0.4mm
 porcelain
 , opaque 0.2mm
 metal
 , 0.4mm body
 porcelain 가 opaque
 , 0.3mm 가 가
 porcelain
 1.0mm opaque
 color가
 1.5mm 가 가

IV. 결 론

A.
 가
 B. Metal
 0.3mm가
 C. Opaque Porcelain
 0.3mm가
 D. Cervical opaque porcelain body
 E. Incisal
 F. 26 ~ 29inch가
 G. 1 75 ~ 100
 H. Metal bond porcelain
 1.5mm 가 가
 I.

가
 가
 color가 가 25inch
 가 가
 26 ~ 29inch 가 color
 가 가 1
 50 가
 color가
 1800
 porcelain
 1800 가
 1800

참고 문헌

(1) 이병태 : 임상치과도재학, 치과세계사, 1978, p. 3
 (2) 김주태 : 齒科陶材學, 明成印刷社, 1974. p. 47
 (3) Herbert T. Shilling burg, Jr., D. D. S and Sumiya
 Hobo, D. D. S., M. S. D and Lowell D. whitsett,
 D. D. S : Fundamentals of Fixed prosthodontics.
 Buch- und Zeitschriften-Verlag " Dic Quintes-
 ssenz" p. 327. 1976 Berlin, Chicago, Riode Janeiro-

and Tokyo
(4) Nicholas Martinelli, A. A. S., B. S : Dental labora-

tory technology, St. Louis, p. 317. 1975. The C. V
Mosby Co.