

고정성 국부의치 die Trimming의 기술

Cicago 치과기공소

Simplified technique for trimming fixed partial denture dies

die(master cast) (margin) finish line , die Trimming
 (impression) finish line die (margin)
 (impression body) finish line (master cast) Jeweler ' saw
 finish line 가 trimming
 가 die(stone die)
 trimming

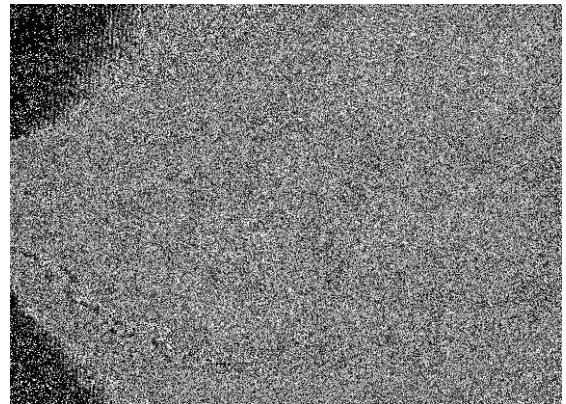
(stone) finish line ㅈ
 die(master die) trimming
 (stone)가
 (mechanical slip)가 가 ,
 instrument) 가 trimming (motar, rotary finish line
 가 가
 가 (Jeweler ' s saw) 가 (mast
 cast) die(master die)
 die margin
 finish line

polysulfide rubber base, silicon
 rubber base poly ether rubber base

가 (reversible hydrocolloid
 impression material)
 (impression body)

기술(Technique)

1. finish line 가
 (1).

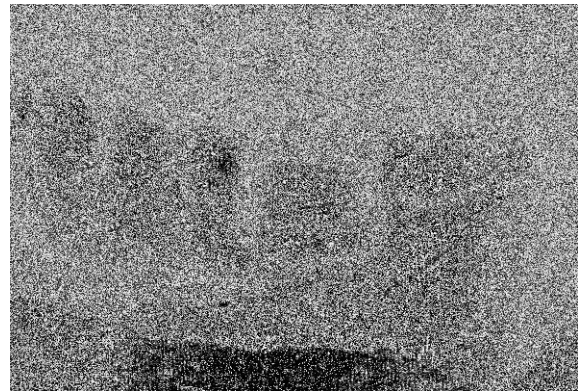


1. prepared teeth polysulfide impression

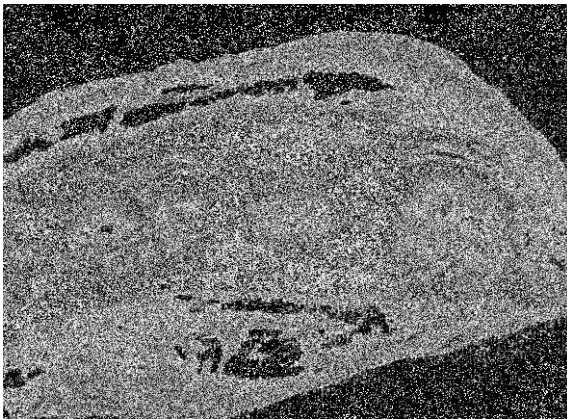
- 2. finish line
- 3. intrasulcular injection

(low fusing inlay wax) 가
 가
 (wax) 가

(wax)
 (wax)가 (2).
 4. (wax)가 finish line



4. die

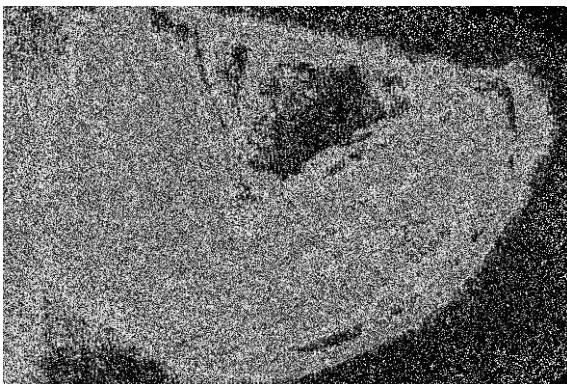


2. (inlay wax) 가

- 5. pin (cast)
- 6. (3)
 (wax) (
- 4).
- 7. finish line

결론(conclusion)

die
 가 die margin



3. (inlay wax)

참고문헌

1. Johnston, J. F., Phillips, R. W., and Dykema, R. W. Modern Practice in Crown and Bridge Prosthodontics, ed 3. Philadelphia 1971, W. B. Saunders Company. Special thanks to J. L. Altshuler Associates, Boston, Mass., for the use of their laboratory.