

가철식 국부의치 하부구조의 적합성에 대한 기공과정에 관한 고찰

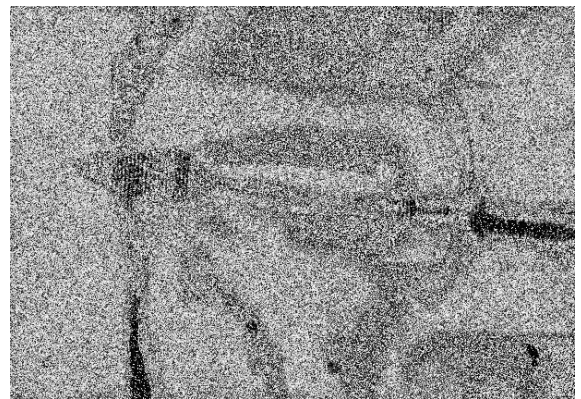
이유경 치과

Laboratory procedures for fitting removable partial denture frameworks.

가
(removable partial denture)
chloroform gold rough mixture
disclosing wax
가
(framework)
master cast
rest, clasps
major or minor connector
casts
(frame work)가 master
가 master cast
(frame work)
(refractory cast)
(chrome-cobalt)
(metalshrinkage)
(frame work)
chair side time
(removable partial denture) 가

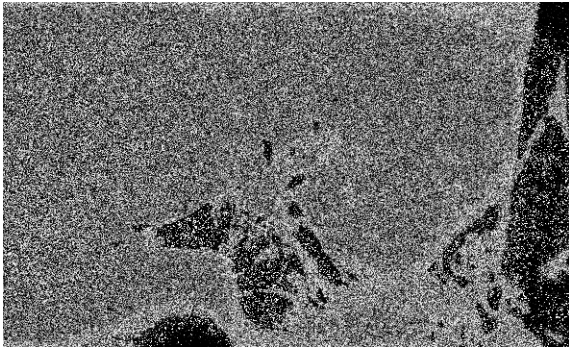
-기술(technic)-

1. Block out master cast
(duplication) (clasps)
(retentive part) (stone)
2. (disks), stone bur
(sprue) (1).

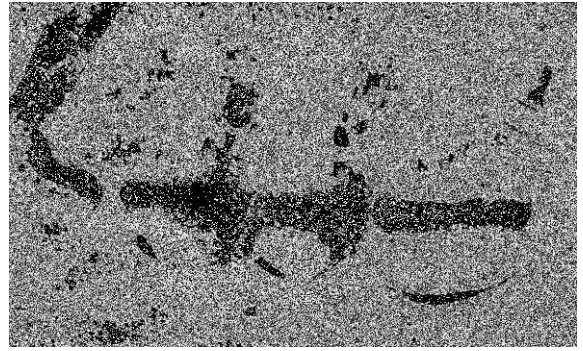


1. high speed lathe stone bur

- 3.
4. (2).
stone bur small pointed
polisher) (electro-



2.



5.

5. disclosing powder

zinc-stearate

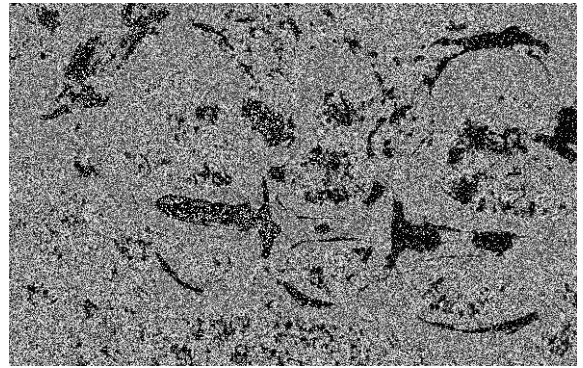
6.

(frame work)

(cast)

(frame work)

7.



6.



3.

stone

가 (cast)
가 (3, 4).

(5).

8.

small pointed stone rubber point
가 (buff)

(6).

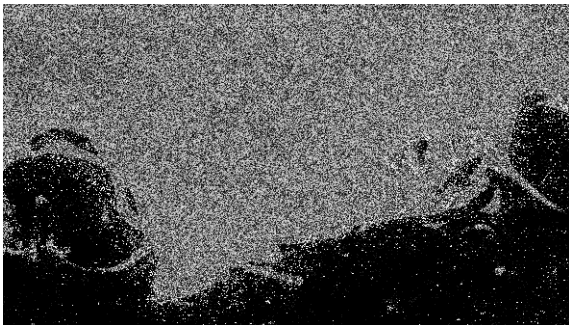
9. cast

(frame work) master

(clasps) stone
(frame work) (cast)

5

8



4.

-개요(summary)-

가
 (removable partial denture frame work)
 master cast

(frame work)

(cast)
 master cast

가

(7).



7.

참고문헌

1. Dykema, R. W., Cunningham, D. M., and Johnson, J. F.: Modern Practice in Removable Prosthodontics. Philadelphia, 1969, W. B. Saunders Company, p 247.
2. Applegate, O. C.: Essentials of Removable Partial Denture Prosthesis, ed 3. Philadelphia, 1966, W. B. Saunders Company, p 367.
3. Henderson, D., and Steffel, V.: McCracken's Partial Denture Construction, ed 4. St. Louis, 1973, The C. V. Mosby Company, pp 364, 400.