

Notes on Korean Higher Fungi (IV)

Ji-yul Lee, Byong-Kak Kim*, and Duck-Hyun Cho**

Department of Food Science, Seoul Womans College, Seoul, Korea
College of Pharmacy, Seoul National National University, Seoul, Korea*
Youngkwang Girls' High School, Youngju, Kyungsangbuk-do, Korea**

韓國高等菌類記 (IV)

李址烈·金炳珏*·趙德炫**

서울女子大學 食品科學科, 서울大學校 藥學大學*,
慶北榮州, 榮光女子高等學校**,

Abstract

Some 50 fungi were collected and identified at Youngu and Mt. Sobaek from April to October in 1977. The results have shown that, following ten species are new to Korean list.

Collybia dryophila (BULL. ex FR.), QUEL., *Mycena polygramma* (BULL. ex FR.) S.F. GRAY., *M. pura* (PERS. ex FR.) QUEL., *Crepidotus nephrodes* (BERK. et CURT.) SACC., *Inocybe montana* KOBAY., *I. squamulosa* KOBAY., *Rhodophyllus ater* HONGO, *R. violaceus* (MURR.) SING., *Leccinum aurantiacum* (BULL.) S.F. GRAY., and *Suillus aeruginascens* (SECR.) SNELL.

The authors wish to express our thanks to Asan Foundation for the financial support for a part of this research project.

Homobasidia 같은 자루菌亞綱

Hymenomycetes 菌蕈類

Agaricales 송이 버섯目

Tricholomataceae 송이 버섯科

Collybiadrophila (BULL. ex FR.) QUEL. 굵은 대
애기버섯(新稱)

QUELT, Champ. Jura Vosg. 1 : 97. 1872 ; Enchir.
Fung. 31. 1886.

Agaricus dryophilus BULL. Herb. Fr. pl. 434, f.

2. 1789-FRIES, Syst. Myc. 1 : 124 1821 ; Epicr. Myc
92. 1838 ; Monogr. Hymen. Suec. 1 : 162. 1857 ;
Hymen. Eur. 122. 1874.

Omphalia dryophila S.F. GRAY, Nat. Arr. Brit
pl. 1 : 162. 1821.

Marasmius dryophila KARST. Erit. Oefv. Final
Basidsv. 103, 1889.

Collybidium dryophilum MURR. Mycologia, 3
101. pl.40, f.8. 1911 ;

Gymnopus dryophilus MURR. Mycologia, 9 : 259
pl.11, f.4. 1917.

IMAZ. and HONGO, Coll. Ill. Fung. Jap. pl.6, f.

36. 1957.

IMAZ., HONGO and TUBAKI, Common Fungi of Japan in Colour, pl. 37, f. 2. 1970.

Pileus 2-5cm broad, convex to plane, fleshy colored, cream colored or yellowish brown, light when dry, viscid when wet, margin incurved, flesh thin, fleshy colored. Lamellae subwhite or cream colored, crowded, free or subadnexed. Stipe 3-5.7×2.1-3.5mm, yellowish brown, subwhitish yellow upward subcylindrical, bent at the base, hollow. Spores 4.3-5.7×2.1-3.1 μ , seed-shaped, white, enclosed oil drops, hymenium layer 14.3-20.0×2.9-4.3 μ , clavate, hyphae from gill trama 40-60.1×4.3-8.6 μ , clamp connection absent.

HAB.: Clustered on the fallen leaves from spring to fall. Edible.

DISTR.: Korea (Mt. Sobaek), Japan, Sri Lan Ka, Europe, North America, Australia.

Mycena polygramma (BULL. ex FR.) S.F. GRAY. 세로줄애주름 버섯(新稱)

S.F. GRAY, Nat. Arr. Brit. pl. 1 : 619. 1821.

Agaricus polygrammus BULL. Herb. Fr. pl. 395. 1791-FRIES, Syst. Myc. 1 : 146 1821 ; Epicr. Myc. 107, 1838 ; Monogr. Hymen. Suec. 1 : 209. 1857 ; Hymen Eur. 139. 1874.

Mycena parabolica RICKEN, Blatterp. 439, 1915.

IMAZ. and HONGO, Coll. Ill. Fung. Jap. pl. 11, f. 65. 1965.

Pileus 3.2-7cm broad, subcylindrical to plane but convexed at the center, tomentose, furrow, dull orange, yellowish brown at the center, yellowish brown when wet. Lamellae brown, sparse, sinuate or free. Stipe 7-9cm×3-7mm, some thick at the center, white upward compost materials of reticular-shaped attached on the surface, hyphae and fallen leaves attached at the base, very breakable hollow. Spores 10.3-13.2×5.9-7.4 μ , white, broad elliptical, amyloid, seldom enclosed an oil drop. Cystidia 32.3-36.8×10.3-16.2 μ , flask-shaped, Basidia 36.8-38.2×10.3-11.8 μ , clavate.

HAB.: Solitary or clustered on the fallen leaves from summer to fall. Edible.

DISTR.: Korea (Mt. Sobaek), Japan, Siberia, Minor Asia, Europe, North America.

M. pura (PERS. ex FR.) QUE'L. 밝은 애주름

버섯(新稱)

QUÉLET, Champ. Jura Vosg. 1 : 103. 1872 ; Enchir. Fung. 34, 1886.

Agaricus roseus BULL. Herb. Fr. pl. 507. 1791.

Agaricus purus PERS. Tent. Disp. Fung. 21. 1797 ; - Syst. Meth. Fung. 339. 1801- FRIES, Syst. Myc. 1 : 151. 1821 ; Epicr. Myc. 102. 1838 ; Monogr. Hymen. Suec. 1 : 201, 1857 ; Hymen. Eur. 133. 1874.

Gymnopus purus S.F. GRAY, Nat. Arr. Brit. pl. 1 : 608, 1821.

Prunulus purus MJRR. N. Am. Fl. 9 : 332. 1916 ; Mycologia, 928. pl. 11, f. 3. 1917.

IMAZ. and HONGO, Coll. Ill. Fung. Jap. pl. 15, f. 88. 1957.

IMAZ. and HONGO, Coll. Ill. Fung. pl. 11, f. 63. 1965.

IMAZ., HONGO and TUBAKI, Common Fungi of Japan in Colour, pl. 39, f. 5. 1970.

Pileus 2-5cm broad, campanulate to plane, reddish purple or whitish purple, fade out when dry. Lamellae fade purple or white, crowded, adnexed or adnate. Stipe 5-8cm×2-7mm, same colored with pileus, whitish purple downward, hollow.

Spores 6.4-8.6×2.9-4.0 μ , cylindrical or elliptical, some enclosed projection on the surface, grayish yellow green, amyloid. Basidia 21.5-24.3×4.3-8.6 μ , sterigmata 2.9-5.7 μ long. Cystidia 51.5-62.9×10.0-12.9 μ , fusoid or clavate, membrane thick.

HAB.: Clustered or solitary on the soils with fallen leaves under the trees from spring to fall. Edible.

DISTR.: Korea (Mt. Sobaek), Minor Asia, Europe, North America, Africa, Australia.

Crepidotaceae 노란귀 버섯과

Crepidotus nephrodes (BERK. et Curt.) SACC. 콩팥 노란귀 버섯(新稱)

SACCARDO, Syll. Fung. 5 : 882. 1887-SINGER, Agaricales, 593. 1949.

Agaricus nephrodes BERK. et CURT. Ann. Mag. Nat. Hist. 11. 12 : 422. 1853.

Agaricus malachus SACC. Syll. Fung. 5 : 882. 1887.

Pileus 1mm in radius, scoop-shaped, grayish white, white flour distributed on the surface. Lamellae

crowded, white to grayish. No stipe. Spores 4.4–5.9 μ , globose, white, nonamyloid, formed projection on the surface, rough, Basidia 14.7–19.1 \times 4.4–5.9 μ , clavate.

HAB.: Clustered on the fallen branches of acacia trees.

DISTR.: Korea (Youngju), Japan, North America

Cortinariaceae 끈적 버섯과

***Inocibe montana* KOBAY.** 산딸 버섯(新稱)

KOBAYASI, Nagaoa, 2 : 97, f. 50, 1952.

Pileus 1.5–2.5cm broad, hemiglobose to plane, brown or darkish yellow, flesh splitted when adult radially, flesh white. Lamellae crowded, same colored with the pileus, adnate or free. Stipe 2–3cm long, 1–3mm thick, yellowish white or pale yellow, thick upward, solid.

Spores 5.9–8.8 \times 5.2–5.9 μ , irregular multiangularshaped light brown, nonamyloid. Cystidia 47–61.7 \times 16.2–20.6 μ , fusoid.

HAB.: Clustered on the lower mountain of *Pinus densiflora*, summer to fall.

DISTR.: Korea (Youngju), Japan.

***Inocibe squamulosa* KOBAY.** 비늘 맘버섯(新稱)

KOBAYASI, Nagaoa, 2 : 100, f. 26, J.f. 53. 1952.

Pileus 1.8–3.3cm broad, subglobose to round mountain-shaped, downy hairs and soales of brown distributed roughly on the surface, flesh light yellow, margin white; incurved. Lamellae flesh colored, crowded, sinuate or adnate. Stipe 2.7–3.4cm long, 2.5–3.5mm thick, annulus leaved the above flesh colored, at the above portion, brown, at below rough. Spores 8.8–11.8 \times 3.7–5.9 μ , broad elliptical or subcylindrical-shaped, nonamyloid, basidia 17.6–22.1 \times 7.4–8.8 μ , clavate, some formed pormed projection on the apic. HAB.: Solitary or clustered on the sandy soils of lower valleys of *Quercus* sp, summer to fall,

DISTR.: Korea (Yuugju), Japan,

Rhodophyllaceae 외대버섯과

***Rhodophyllus ater* HONGO** 검은 외대버섯(新稱)

IMAZ. and HONGO, Coll. Ill. Fung. Jap. pl. 27, f. 173. 1965.

Pileus 1.2–2cm broad, hemiglobose or cowl-shaped

then plane, tomentose, light brownish gray, with irregular margins, flours distributed on the surface. Lamellae 2–3mm wide, light brownish gray, sparse, sinuate or distant. Stipe 2.5–4.5cm long, 0.8–1.5 mm thick, same colored with the pileus, white hyphae attached at the base, hollow. Spores 7.2–11.4 \times 4.3–7.2 μ , white, multi-angular, rough, formed projection on one side, nonamyloid.

HAB: Solitary or clustered on the soils of grass field.

DISRT.: Korea (Youngju), Japan.

***Rhodophyllus violaceus* (MURR.) SING.** 보라 꽃 외대 버섯(新稱)

SINGER, Mycologia, 39 : 188. 1947 ; Agaricales, 623. 1949.

Entoloma violaceum MURR. N. AM. Fl. 10 : 115. 1917.

IMAZEKI and HONGO, Col. Ill. Fung. Jap. 90. pl. 2.7, f. 175. 1965.

Pileus 1.6–2.5cm broad, campanulate or hemiglobose, depressed, grayish red, brownish gray at the center, grayish red powders distributed radially. Lanellae crowded, yellowish white to darkish yellow, distant or free. Stipe 4.0–5.7cm long, 1–2.5mm thick, light purplish gray or darkis-purple gray, grayish-yellow green at the base, flesh white, hollow. Spores 8.6–11.4 \times 5.7–7.2 μ , multiangular, white, nonamyloid, enclosed an oil drop, spore membrane thick, hymenium layer 20–21.5 \times 7.2–8.6 μ , clavate.

HAB: Solitary or gregarious on the herb-soils.

DISTR.: Korea(Yungju), Japan, North America.

Boletaceae 그물버섯과

***Leccinum aurantiacum* (BULL.) S.F. GRAY** 등색 그물 버섯(新稱)

S.F. GRAY, Nat. Arr. Brit. pl. 1 : 646. 1821–SINGER, Agaricales, 686. 1949.

Boletus aurantiacus BULL. Champ. FR. 320. pl. 236. f. 2. 1784.

IMAZEKI and HONGO, Col. Ill. Fung. Jap. 87. pl. 39, f. 225. 1957.

Pileus 4–10cm broad, round mountain-shaped to plane, light brown then brown or soil colored, minute hairs covered on the surface, margin upcurved

flesh soft, blue when bruised, wrinkled when adult. Tubeshole multiangular, dirty white to gray, distant. Stipe 3.5~9.5cm long, 0.4~2cm thick, white, grayish soil-colored, fine scales distributed on the surface, netted, rough, slender toward the base, hollow, white. Spores 8.8-14.7(19.1)×2.9-4.4μ, long fusoid or long elliptical, white or darkish yellow in mass, enclosed one, two or three oil drops, pseudo amyloid, basidium 21.5×12.9μ, fusoid or subcylindrical.

HAB.: Gregarious on the soils of *Quercus* sp. Edible.

DISTR.: Korea (Youngju), Japn, Europe, North America.

Suillus aeruginascens (SECR.) SNELL 녹슬은 그물 버섯(新稱)

SNELL, Lloydia, 7: 25, pl. 2, f. B; pl. f.F. 1944 -SINGER, Agaricales, 657. 1949.

Boletus aeruginascens SECR. Myc. Suisse, 3: 6. 1833.

IMAZEKI and HONGO, Col. Ill. Fung. 83. pl. 37. f. 215. 1957.

Pileus 4.3~6cm broad, round mountain-shaped to plane, dull orange or pale yellow, darkish-yellow brown scales covered on the surface, flesh tough, thick, viscid, white. Tubes hole multiangular, brown decurrent. Stipe 3.5~4cm long, 0.7~1cm thick, whitish yellow vat, netted the above of annulus annulus darkish brown, tube's flesh pale yellow or white.

Spores 8.8-10.3×3.7-4.4μ, subacylindrical or long elliptical, white in mass, darkish yellow pseudoamyloid, basidia 20.1-22.1×6.6-7.4μ, clavate.

HAB.: Solitary or clustered on the herb soils.

DISTR.: Korea (Youngju), Japan.

要 約

1977年 4월부터 1977年 10월까지 小白山 및 榮州地方에서 採集된 高等菌類를 同定한 結果 未記錄種은 다음과 같다.

Collybia dryophila (BULL. ex FR.) QUÉL., (꿩은 대애기 버섯), *Mycena polygramma* (BULL. ex FR.) S.F. GRAY. (세로줄애주름), *M. Pura* (PERS. ex

FR.) QUÉL. (맑은 애주름 버섯) *Crepidotus nephrodes* (BERK. et CURT.) SACC. (회색콩팥노란키배섯) *Inocybe montana* KOBAY. (산땀 버섯) *I Souamulosa* KOBAY. (비늘 땀 버섯), *Rhodophyllus ater* HONGO (검은 외대버섯), *R. violaceus* (MURR.) SING. (보라 빛 외대버섯), *Leccinum aurantiacum* (BULL.) S.F. GRAY. (등색 그물버섯), *Suillus aeruginascens* (SECR.) SNELL (녹슬은 그물버섯) 저자들은 아산재단이 연구비의 일부를 보조하여 준데 대하여 사의를 표한다.

The Explanations of Plates

The Plate I

A. *Collybia dryophila* (BULL. ex FR.) QUÉL.

A-1 carpophores, A-2 spores, A-3 hymenium layer, A-4, hyphae from gill trama

B. *Mycena polygramma* (BULL. ex FR.) S.F. GRAY.

B-1 spores, B-2 basidia, B-3 cystidia,

C. *M. pura* (PERS. ex FR.) QUÉL.

C-1 carpophores, C-2 spores, C-3 basidia, D-4 cystidia

The Plate II

A. *Crepidotus nephrodes* (BERK. et CURT.) SACC.

A-1 carpophores, A-2 spores, A-3 basidia,

B. *Inocybe montana* KOBAY.

B-1 carpophores, B-2 spores, B-3 cystidia,

C. *I. squamulosa* KOBAY.

C-1 carpophores, C-2 spores, C-3 basidia, C-4, cystidia

D. *Suillus aeruginascens* (SECR.) SNELL.

D-1 spores, D-2 basidia

The Plate III

A. *Rhodophyllus ater* HONGO

A-1 carpophores, A-2 spores, A-3 basidia,

B. *R. violaceus* (MURR.) SING.

B-1 spores, B-2 hymenium layer

C. *Leccinum aurantiacum* (BULL.) S.F. GRAY.

C-1 carpophores, C-2 spores, C-3 basidia

The Plate IV

A. *Mycena polygramma* (BULL. ex FR.) S.F. GRAY.

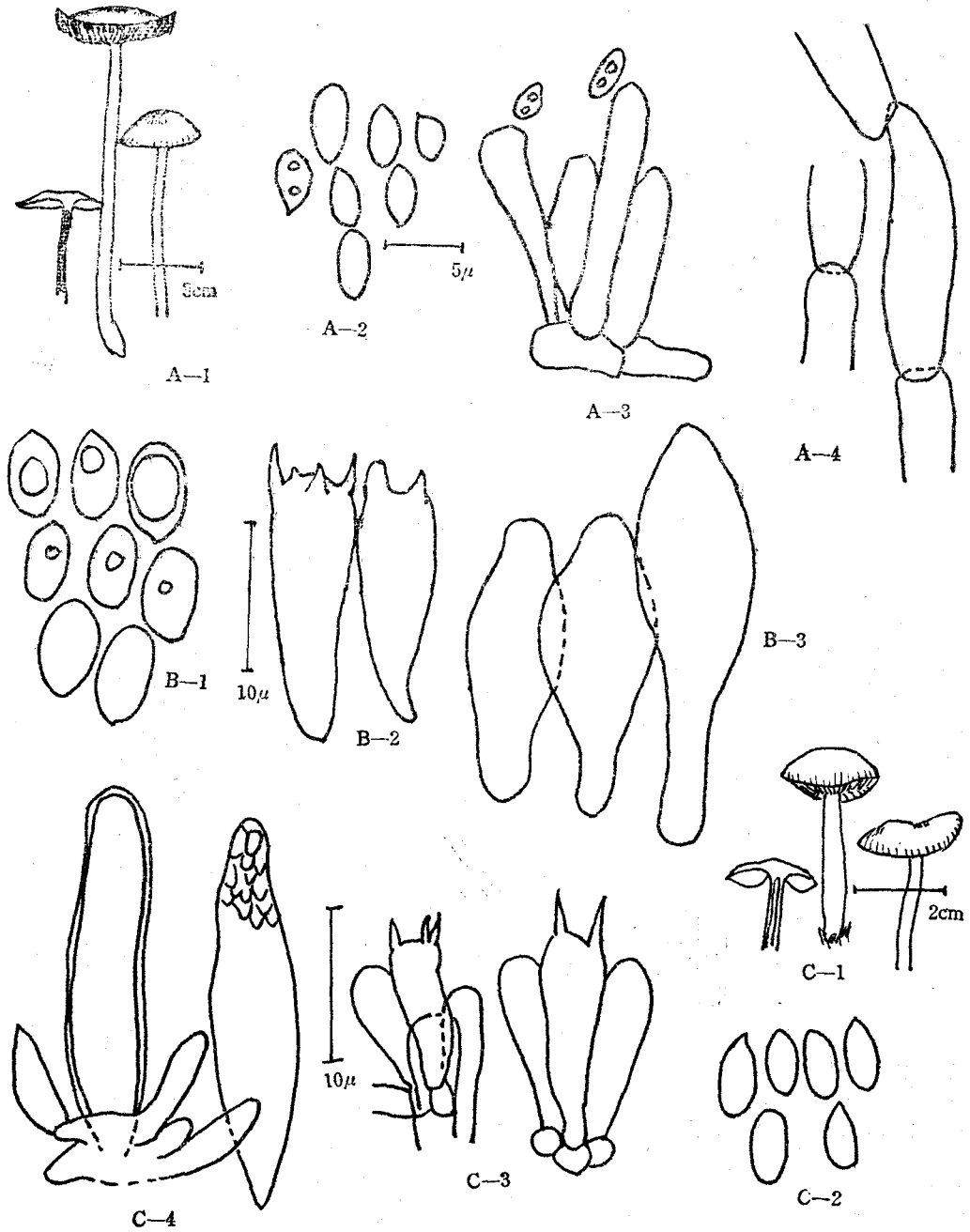
B. *Rhodophylus violaceus* (MURR.) SING.

C. *Suilus aeruginascens* (SECR.) SNELL.

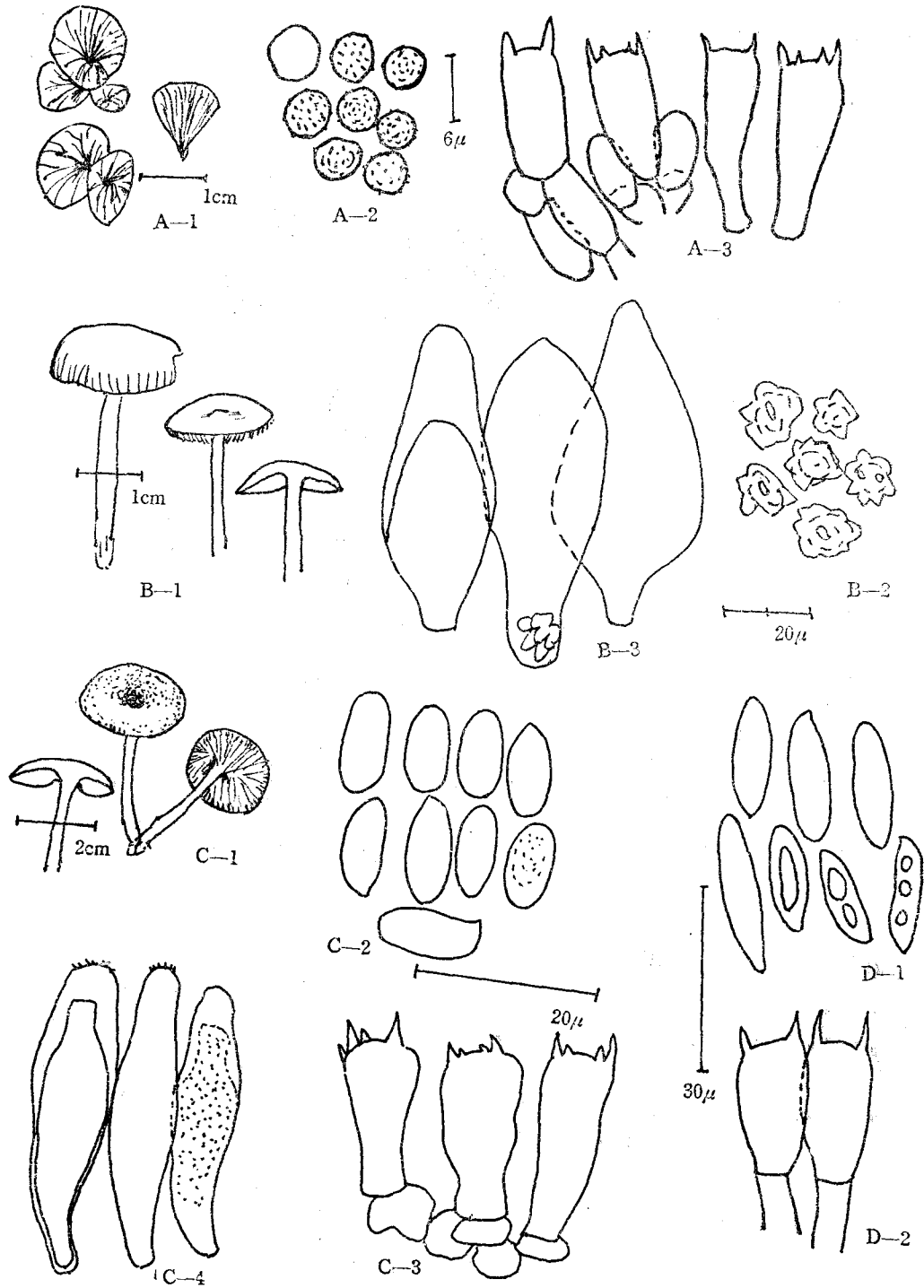
References

1. Hongo, T. (1977) : Notes on some boleti from Tottori III, Tottori Mycol. Inst. (Japan) 15 : 50—54,
2. Hong, S.W.(1974) : Scientific research of Mt. Naejang areas, Korea Nature Preservation Society.
3. Imazeki, R. and T. Hongo(1957) : coloured Illustrations of Fungi of Japan, Hoikusha publishing Co. Ltd.
4. ibid (1965) : ibid. vol.
5. ibid and Tubaki (1970) : Common Fungi of Japan in Colour,
6. Ito, S. (1955) : Myc. Fl. Japan 2(4), Yokendo
ibd (1957) : ibid. 2(5),
7. Kim et al., (1975) : Taxonomic Study on Korean Basidiomycetes. Kor. J. Mycol. 3(2) : 31—33
8. Lee, J.Y. (1957) : The List of the Fungi of Korea, of Report. Seoul High School
9. ibid and D.H. Cho (1975) : Notes on Korean Higher Fungi, Kor. J. Mycol. 3(2) : 13—18
10. ibid (1977) : ibid. (II), 5(2) : 17—20
11. ibid (1976) : Fungal Flora in Bamboo Forest of Korea (1), Kor. J. Mycol. 4(1) : 11—16
12. Lee, J.Y. et al. (1959) : Coloured Illustrations of Fungi of Korea, Baemungak, Seoul
13. Lee, E.R. and H.S. Jeong (1972) : Floral Studies on Basidiomycetes in Korea, R-72-82. Ministry of Science and Technology
14. Lee, Y.N. and D.H. Cho (1976) : Basidiomycetes on Mt. Sobaek and Andong areas with some addition to the Korean Flora, Kor. Jour. Microbiol. 14(2) : 57—64
15. Lim, J.H. and B.K. Kim (1972) : Taxonomic Invesstion onKorean Higher Fungi (1) The Kor. J. Pharmacog. 3(2) : 11—20
16. Singer, R. (1962) : The Agaricales in Modern Taxonomy (2nd) 915 pp.73 pls.
17. Vassilieva, L.N. (1973) : Die Blätterpilze und Röhrlinge (Agaricales) von Primorsky Region. Akademie der Wissenschaften der UdSSR. Hayka.

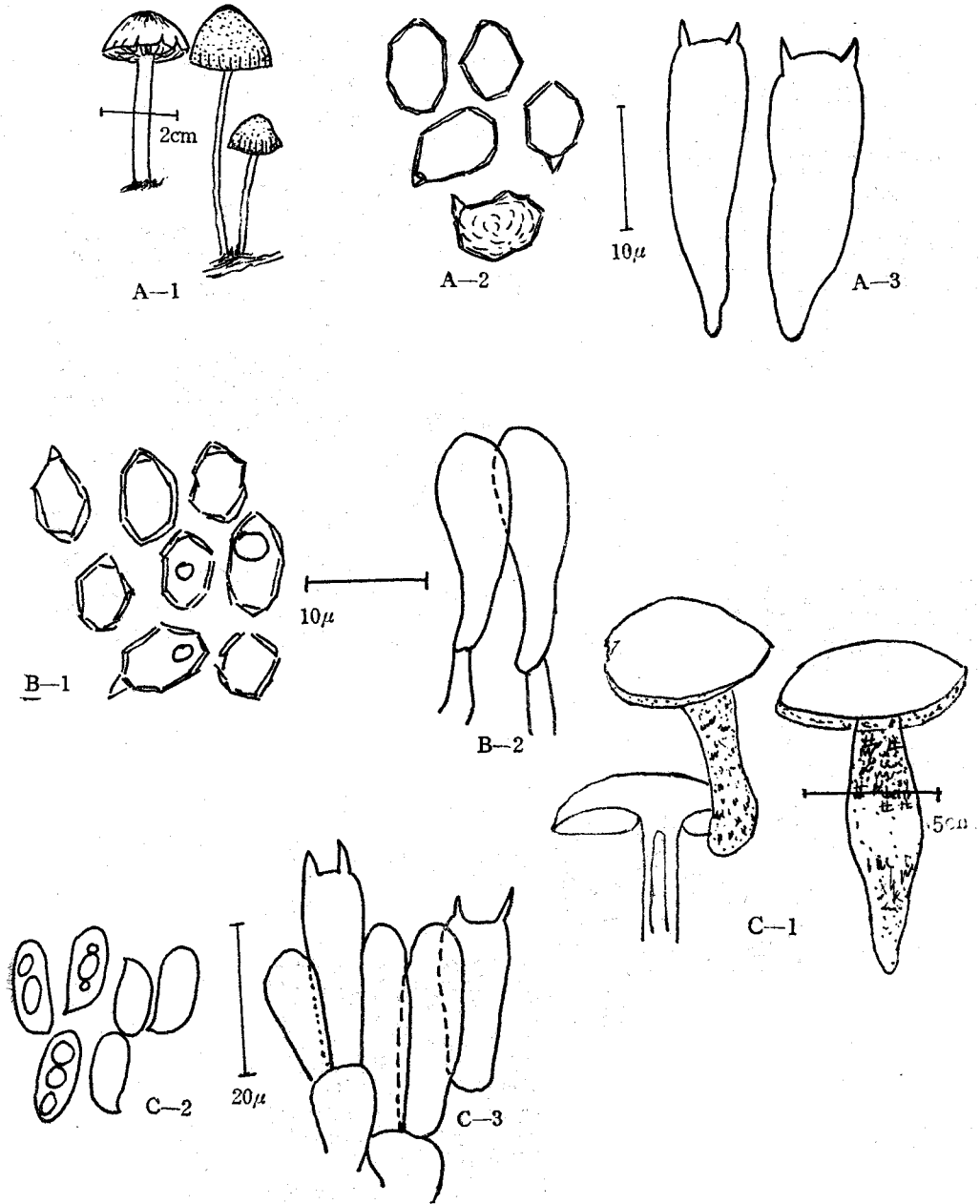
The plate I



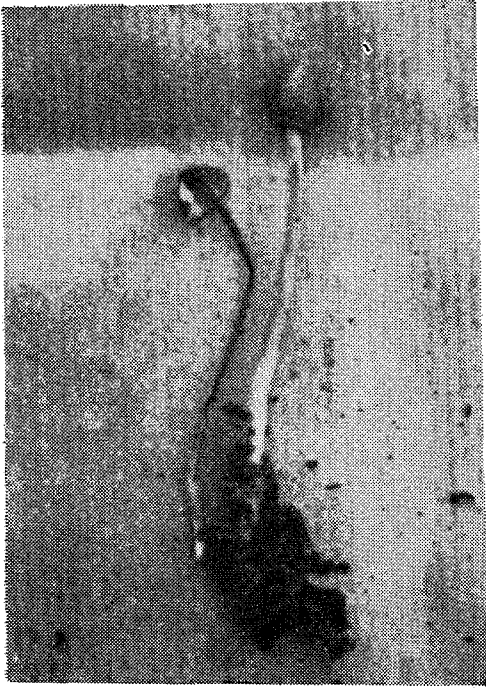
The plate II



The plate III



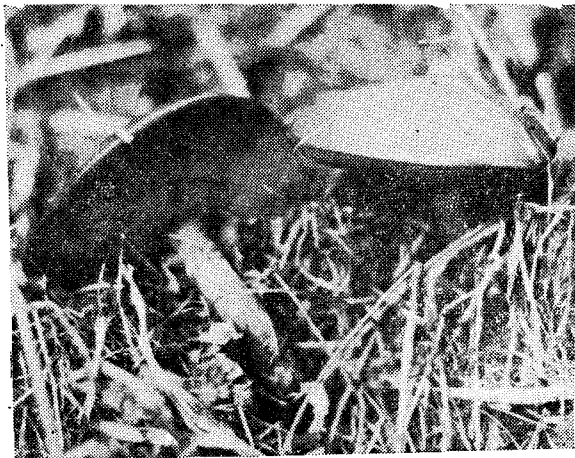
The Plate IV



A



B



C