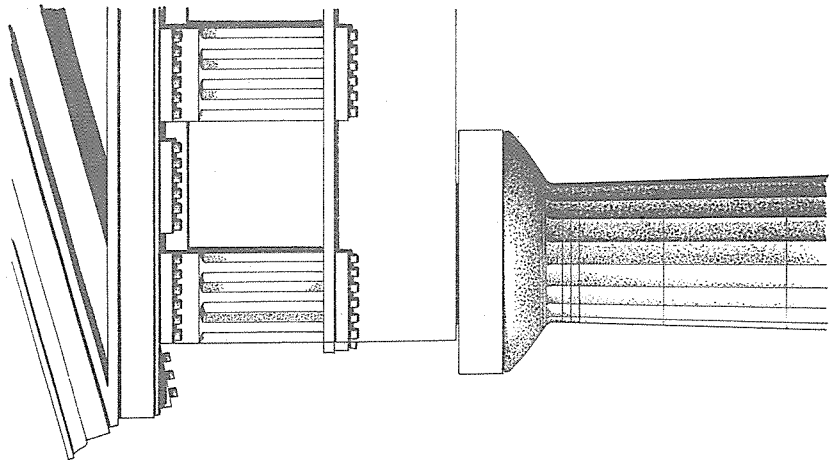
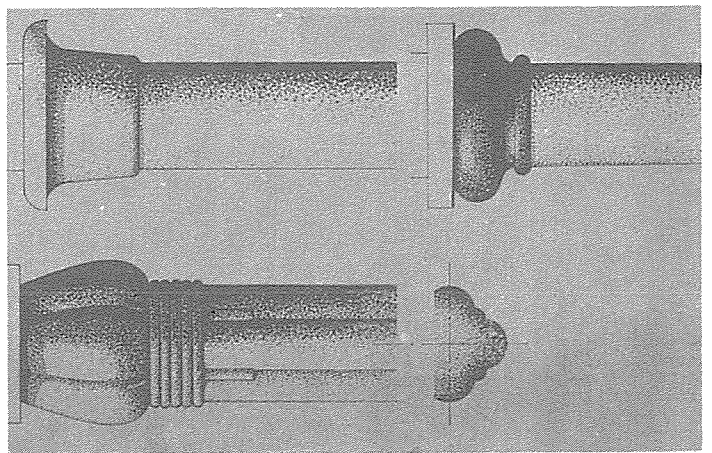


# 西洋建築의 比較樣式 (I)

## 前 古典期的의 柱 (Pre-Classical Columns)

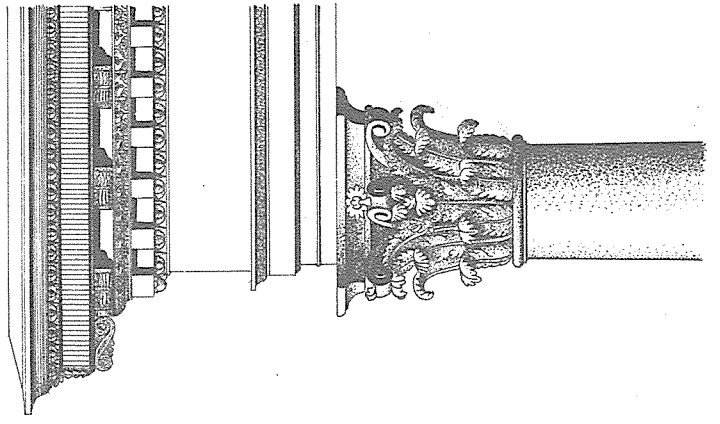
### 柱와 앤더블레취(Entablatures)

Vitruvius Poillio  
 Vitruvius Poillio 가 분류한 代表的인 古典 Order



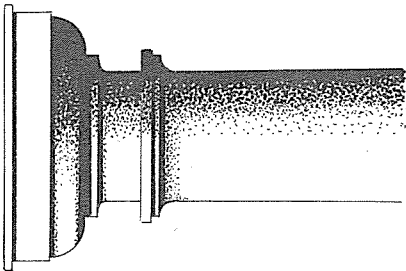
도리아식 (Doric)

이오니아식 (Ionic)

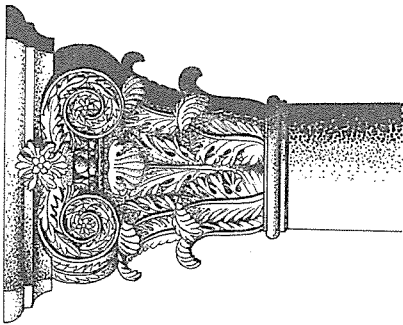


코린트식 (Corinthian)

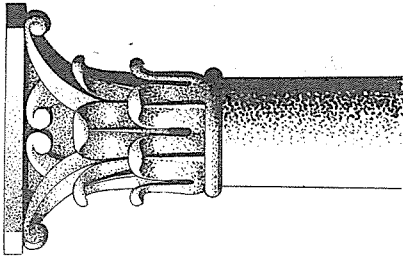
柱頭  
Capitals



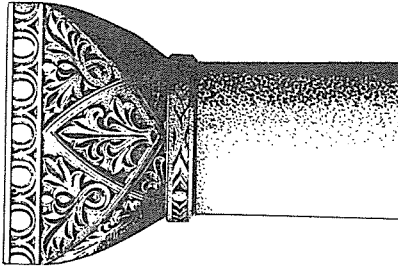
에트루리아 양식(Etruscan)  
볼피신전 P 로마양식



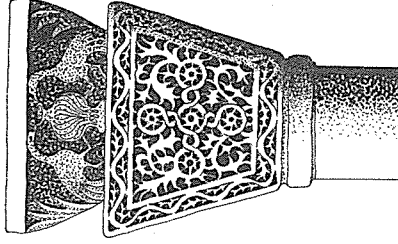
로마양식(Roman)  
혼합식(코린트와 이오니아식)의 柱頭



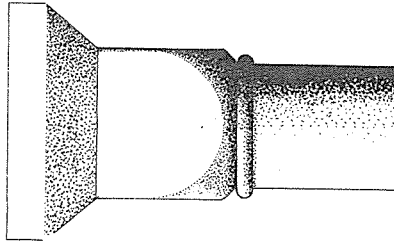
로마양식(Roman)  
카피톨(Capital) 신전  
C. A. D. 100



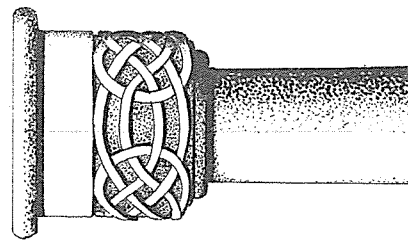
비잔틴 양식(Byzantin)  
라벤나(Ravenna)



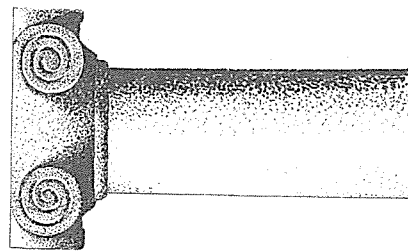
비잔틴양식(Byzantin)  
성·소피아 성당



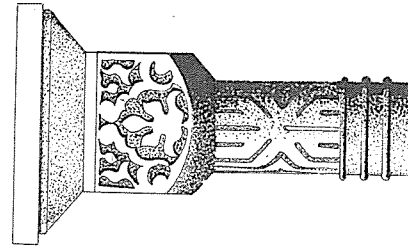
로마네스크 양식(Romanesque)  
입방형의 柱頭



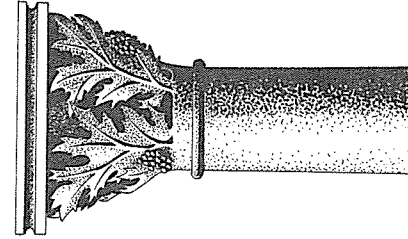
로마네스크 양식(Romanesque)  
Wimpfen am Berg



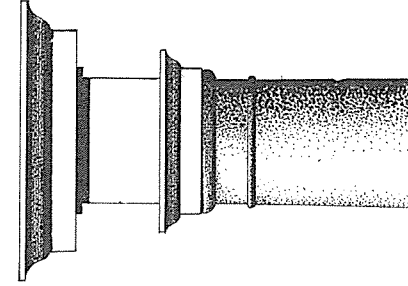
로마네스크 양식(Romanesque)  
풀다(Fulda)



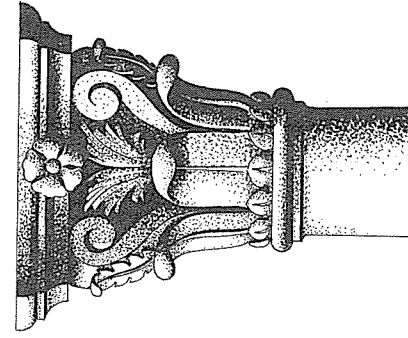
무어양식(Moorish)  
그라나다의 알함브라궁전



고딕양식(Gothic)  
입장석형의 柱頭



르네상스 양식(Renaissance)  
제노아의 말비궁전



바로크 양식(Baroque)  
소용돌이형의 柱頭