

On the Female of *Conoculus simboggulensis* Paik, 1971

Kap Yong Paik

(Dept. of Biology, Kyungpook University)

도토리거미(*Conoculus simboggulensis*)의 암컷의 記載

白 甲 鋪

(慶北大 師大 生物學科)

(Received June 17, 1974)

摘 要

著者 (1971)는 앞서 忠淸北道 槐山郡 延豊面 錦岱里의 心伏窟에서 採集한 수컷을 holotype으로 하여 도토리거미科 (Symphytognathidae)에 屬하는 新種 *Conoculus simboggulensis* 도토리거미를 記載한 바 있다.

그 當時 採集되지 않았던 암컷이 近者에 發見되었기에 이에 암컷에 對하여 記載하였다. 이 암컷의 發見으로써 本種이 洞窟 밖에서도 棲息한다는 事實이 밝혀졌다. 여러모로 미루어 本種은 好洞窟性 (troglophilous)의 거미로 생각된다.

INTRODUCTION

Conoculus simboggulensis has been described on the male specimen (holotype) by the author (1971). In present paper, the author described on the female, which is unknown to this day.

The specimen used for preparing the present report is deposited in a collection of Kyungpook National University.

Description

Conoculus simboggulensis Paik, 1971

(figs. 1, 2 & 3)

Measurements (mm). *Female* : BL-2.48, CL-1.28, CW-0.84, LBL+SL-1.00, SW-0.81, EDL-0.48, EDW-0.56, AER-0.40, PER-0.45, AL-1.32, AW-1.24. Leg I 1.70+0.52+1.55+0.88+0.96=5.53, II 1.28+0.45+1.13+0.65+0.75=4.16, III 0.83+0.33+0.65+0.45+0.60=2.81, IV 1.05+0.35+0.83+0.53+0.60=3.33. Palp 0.80+0.18+0.33+0.63=1.94.

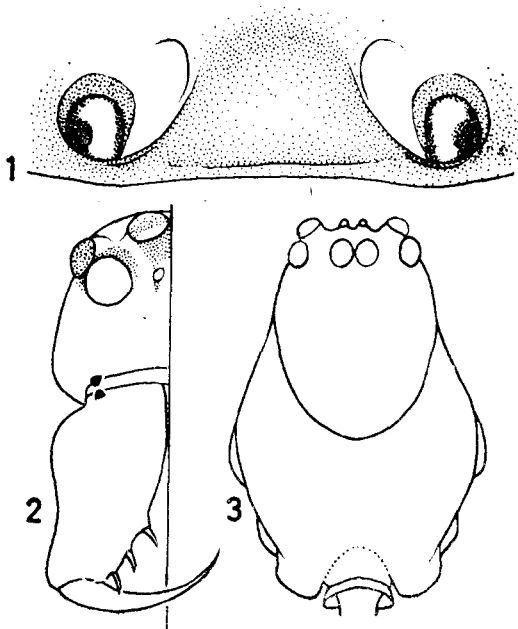
Description. *Female*: The general aspects and coloration similar to that of male. Carapace index is 63; this value is higher than that of male. Cephalic width index is 69; this value is lower than that of male. Eye area index is 80; eye row index is 89. Eye ratio, $AME < PME < ALE = PLE (3 : 9 : 10 : 10)$. AME separated from each other by slightly less their diameter, from lateral eyes by slightly more than their diameter. PME contiguous each other, from lateral eyes by about their radius. Lateral eyes of both rows contiguous, and protruded antero-laterally. MOQ wider behind than in front (17 : 6), and slightly longer than width in ratio 18 : 17. AME dark, and the rest pearl white. Clypeus, chelicerae, maxillae, labium and sternum are similar to that of male.

Legs brown, with long hairs. Leg formula 1,2,4,3. Patellae with two dorsal spines; the proximal spine weaker than the distal one. Tibiae with two dorsal spines respectively. The ventral surface of 1st femur armed with nine small conical projections. The 1st leg armed with three minute pro-ventral spines, one on tibia, two on metatarsus. Abdomen, pedicel, and spinnerets similar to the male. Spiracle is situated much nearer the epigastric furrow than the spinnerets (1 : 2.1).

Biology: The male (holotype) has obtained at a limestone cave (Simbog-gul Cave). But the female used for preparing the present description obtained at out of cave.

Present species, therefore, seems probably troglophilous spider.

Specimen examined: 1 ♀, Mt. Whang-ak, Jickchi-sa, 29-X-1972, Hi Jong Lee.



Figs. 1-3. *Conoculus simbog-gulensis* Paik, 1971 1. Epigynum, ventral view. 2. Face and chelicera, frontal view, right half. 3. Carapace, dorsal view.

Reference

Paik, K.Y., 1971. Cave-dwelling Spiders from Southern Part of Korea II. Spiders of Simbog-gul Cave and Sungyoogul Cave. *Theses coll. Commem. 60th Birthday of Prof. Yung Ho Choi*, pp. 299-313, figs. 1-27.