

Studies on Flies in Korea

9. On the hitherto unreported species in Korea

Soung-Ho Park

(Dept. of Science Education, Gyeongsang University)

韓國產 파리의 研究

9. 韓國未記錄種에 關하여

朴 星 湖

(慶尙大學 科學教育科)

(Received November 11, 1972)

摘 要

1972年 5, 6月 全北 內藏山一帶의 파리類 調査를 行한 바, 다음과 같은 우리나라 未記錄種이 發見되었다.

1. *Parasarcophaga unguitigris* Rohd, 1938
2. *Protocalliphora azurea* (Fallén, 1816)
3. *Dichaetomyia japonica* Hori et Kurahashi, 1967
4. *Hydrotaea occulta* (Meigen, 1826)
5. *Phaonia crassipalpis* Shinonaga et Kano, 1971
6. *Megophyra multisetosa* Shinonaga, 1970

Dichaetomyia, *Megophyra*, *Protocalliphora*의 3屬은 우리나라에서 처음으로 記錄된다. 위 種들이 追加되어 우리나라 집파리科는 23種, 검정파리科는 14種, 쉬파리科는 36種이 된다.

DESCRIPTIONS

Dichaetomyia japonica Hori et Kurahashi, 1967
(Sci. Rep. Kanazawa Univ., 12(1) : 71, 1967)

♂ body length: about 7mm

Head: Eyes with microscopic hairs, contiguous; frons narrow; antennae yellow, length of 3rd segment about 3 times that of 2nd segment; arista brown, feathered to tip; pal-

pi yellow, brownish basally.

Thorax: Scutum dark to brown with grayish pollen but humeral part of intra-alar bristles on lateral part of scutum and scutellum yellowish orange; acrostichal bristles 0+1; dorsocentral bristles 2+3; intra-alar bristles 0+3; humeral bristles 3; notopleural bristles 2; scutellum bare on laterally and ventrally; mesopleuron and pteropleuron brown, upper part of pteropleuron with hairs;

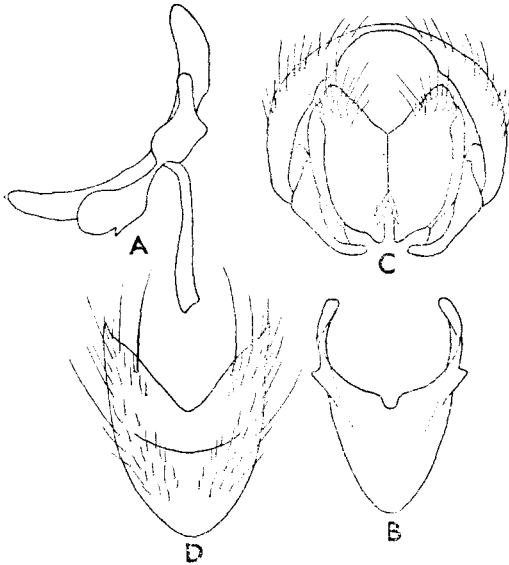


Fig. 1. *Dichaetomyia japonica*

- A: Lateral view of male penis and parameres.
 B: Vinculum. C: Hind view of forceps.
 D: 5th sternite of male.

metathoracic spiracles with bristles on lower margins.

Wings: Hyaline, slightly infuscated; R1 bare; R4+5 bare dorsally, 3 fine hairs present on basal node of ventral surface; squamae yellow, lower squamae tongue-shaped, with brownish marginal cilia.

Legs: yellowish orange; fore femur with a pair of rows of bristles on posterodorsal surface, a row of long bristles on posteroventral surface; mid femur with several bristles on distal part, a row of hair-like bristles on posteroventral surface; mid tibia with 2 bristles on posterolateral surface; hind femur with a row of bristles on anterodorsal surface, a row of bristles on distal halves of anteroventral surface; hind tibia with one bristle at middle part of anterodorsal surface.

Abdomen: Yellowish orange, 4th and 5th tergites darker; 5th sternite, forceps and genitalia as shown in Fig. 1.

Distribution: Japan (Honshu and Kyushu).
 Locality: Mt. Naejang, 4♂ and 10♀, 19 June, 1972; Mt. Palgong, 1♂, 29 July, 1963.

Megophyra multisetosa Shinonaga, 1970
 Mem. Nat. Sci. Mus., Tokyo, 3: 238 (1970)

♂ body length: 7-10mm

Head: Eyes contiguous; frons black; parafrontals and parafacials black with silvery pollinosity and bare; antennae black, length of 3rd segment about 2 times that of 2nd segment; arista short-haired; gena and meta-cephalon black with grayish pollen; palpi black.

Thorax: Scutum black, with white dust and two obscure longitudinal stripes on prestural area; acrostichal bristles 0+1; dorsocentral bristles 2+3; intra-alar bristles 0+2; prosternum, propleuron, pteropleuron and Hypopleuron bare; mesothoracic and metathoracic spiracles dark brown.

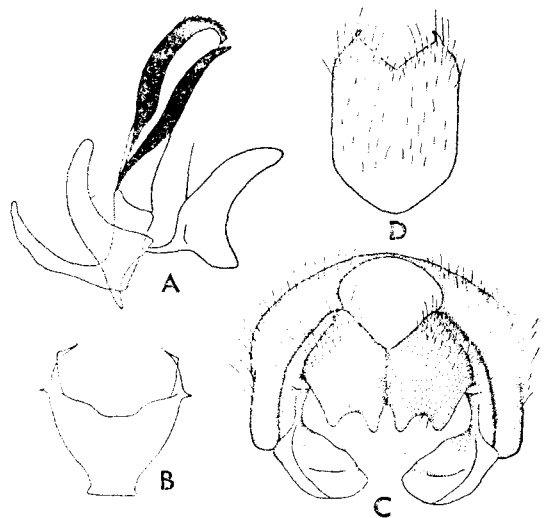


Fig. 2. *Megophyra multisetosa*

- A: Lateral view of male penis and parameres.
 B: Vinculum. C: Hind view of forceps.
 D: 5th sternite of male.

Wings: Hyaline; R1 and R4+5 bare on dorsal and ventral surfaces; squamae yellowish white, with marginal cilia; halter brown, apical part dark brown.

Legs: Black; fore femur with a pair of rows of bristles on posterodorsal surface, a row of bristles on posteroventral surface; mid femur with 2 strong bristles on anterodorsal surface and with a row (about 5 bristles) of bristles on distal halves of anterodorsal surface; hind femur with a row of bristles on anterodorsal and anteroventral surfaces; hind tibia with a row of short bristles; one bristle on postero-dorsal surface.

Abdomen: Black with grayish pollen; each tergites with developed marginal bristles; 5th sternite and genitalia as shown in Fig. 2.

Distribution: Japan (Honshu, Shikoku, Tsushima, Amami Oshima).

Locality: Mt. Naejang, 4 ♂ and 1 ♀, 19 June, 1972.

Phaonia crassipalpis Shinonaga et Kano, 1971
Fauna Japonica, Muscidae (Insecta: Diptera)
vol. 1, p.197 (1971)

♂ body length: about 5-7mm

Head: Eyes with microscopic hairs; frontal stripe invisible by closed parafrontals; parafrontals and parafacials black with silvery pollinosity and bare; antennae black with brownish pollen, length of 3rd segment about 2 times that of 2nd; arista dark brown, long plumose; face black with grayish pollen; gena dark brown, bare with grayish pollen; palpi black.

Thorax: Scutum black with grayish pollen and 4 dark longitudinal stripes; acrostichal bristles 0+1; dorsocentral bristles 2+3; intraalar bristles 0+2; notopleural bristles 2; pr-

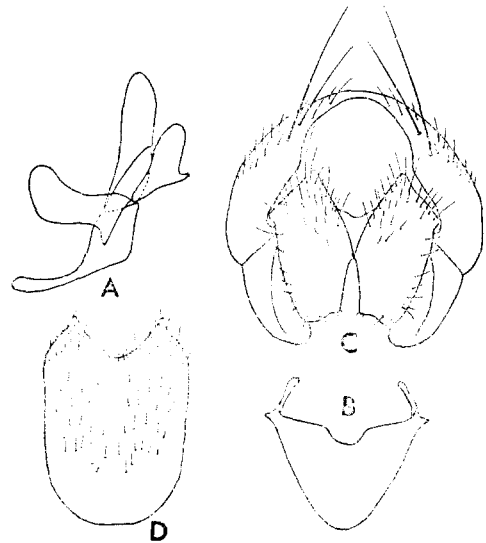


Fig. 3. *Phaonia crassipalpis*

- A: Lateral view of male penis and parameres.
B: Vinculum.
C: Hind view of forceps.
D: 5th sternite of male.

opleuron, notopleuron, pteropleuron and hypopleuron bare.

Wings: Hyaline; R1 and R4+5 bare; basicoستا and epaulet dark brown; squamae yellow.

Legs: Femora and tibiae orange and tarsi black; fore femur with a pair of rows of bristles on posterodorsal surface, a row of bristles on posteroventral surface; fore tibia with one bristle on middle part of posterolateral surface; mid femur with a row of bristles on basal half of anterolateral surface, 2 or 3 bristles on apical part of posterodorsal and anterodorsal surfaces; mid tibia with 3 bristles on posterolateral surface; hind femur with a row of bristles on anterodorsal surface 2 or 3 bristles on anteroventral surface; hind tibia with 2 bristles on anterodorsal surface, one bristle on distal 1/3 of posterodorsal surface.

Abdomen: Black, with yellowish pollen; median dark stripes on 2nd to 5th tergites;

2nd, 4th and 5th tergites on marginal bristles; 5th sternite, forceps and genitalia as shown in Fig. 3.

Distribution: Japan (Tokyo, Hokkaido)

Locality: Mt. Naejang, 4♂ and 14♀, 19 June, 1972.

Hydrotaea occulta (Meigen, 1826)

Anthomyia occulta Meigen, Syst. Besch. 5 : 133 (1826)

♂ body length: 5-6mm

Head: Eyes densely covered with hairs; frons narrow; frontal vitta invisible by closed parafrontals; parafrontals, parafacials and face black with grayish pollinosity; antennae black, length of 3rd segment about 2 times that of 2nd segment; arista black, pubescent; gena and metacephalon black with hairs and grayish pollen; palpi black.

Thorax: Scutum black, covered with grayish pollen; acrostichal bristles 2+4; dorso-central bristles 2+4; intra-alar bristles 0+2; notopleural bristles 2; pre-alar bristles absent; propleuron and hypopleuron bare.

Wings: Hyaline; veins dark brown; R1 and R4+5 bare; basicostal scale and epaulet black.

Legs: Black; fore femur with a pair of rigid processes on distal part of ventral surface (Fig. 4 (F and G)), 4 or 5 strong bristles on the basal part of posteroventral surface; mid femur with a row of bristles on posterolateral surface; mid tibia with 2 bristles on distal half of posterolateral surface; hind femur with a spine which consists of two coalescent bristles on basal one-sixth of ventral surface, a row of bristles on anterodorsal surface; hind tibia with numerous short hairs on distal half of anteroventral surface.

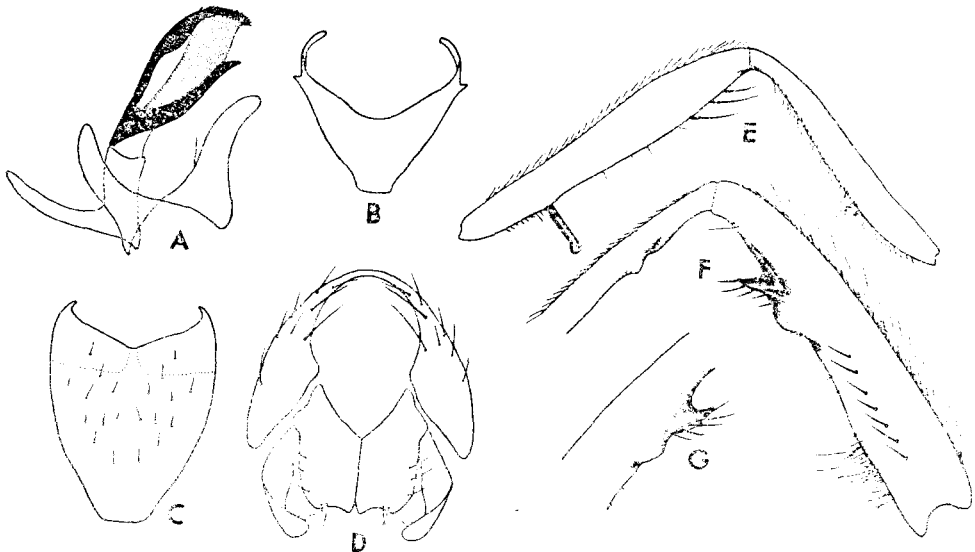


Fig. 4. *Hydrotaea occulta*.

A: Lateral view of male penis and parameres.

B: Vinculum. C: 5th sternite of male.

D: Hind view of forceps.

E: Hind femur and tibia (lateral view) of male.

F: Anterolateral view of male fore femur.

G: posterolateral view of male fore femur.

Abdomen: Black with grayish pollen; a median dark longitudinal stripes present on each tergite; 5th sternite, forceps and genitalia as shown in Fig. 4.

Distribution: Japan, Formosa, N. Africa, N. America, N.E. Burma.

Locality: Mt. Naejang, 15♂, 25-27 May, 1972, 19 June, 1972.

Protocalliphora azurea (Fallén, 1816)

Musca azurea Fallén, Kat.Vet. Acad. Handl. Stockholm: 245(1816)

Protocalliphora azurea: Zumpt, Flieg. Palae. Reg. 64i

♂ body length: 9mm

Head: Frons about 1/4 width of one eye; frontal vitta black; parafrontals and parafacials black with silvery pollen and with black hairs; antennae dark brown, length of 3rd segment about half times that of 2nd segment; arista feathered gena shiny black; palpi brown.

Thorax: Scutum dark blue with four dark inconspicuous longitudinal stripes on presutural area; acrostichal bristles 3+4; dorso-central bristles 3+4; intra-alar bristles 1+3; humeral bristles 5; posthumeral bristles 4; upper part of propleuron hairy; prosternum hairy; metathoracic spiracles dark brown.

Wing: Hyaline; stem vein(R) setose on dorsal surface; R4+5 with 9 short setae along dorsal surface from basal node to r-m; basicoستا and epaulet black; subcostal sclerite dark brown.

Legs: Black; fore femur with a pair of rows of bristles on posterodorsal surface, a row of bristles on posteroventral surface; fore tibia with a row of short bristles on anterodorsal surface, 2 bristles on middle part of

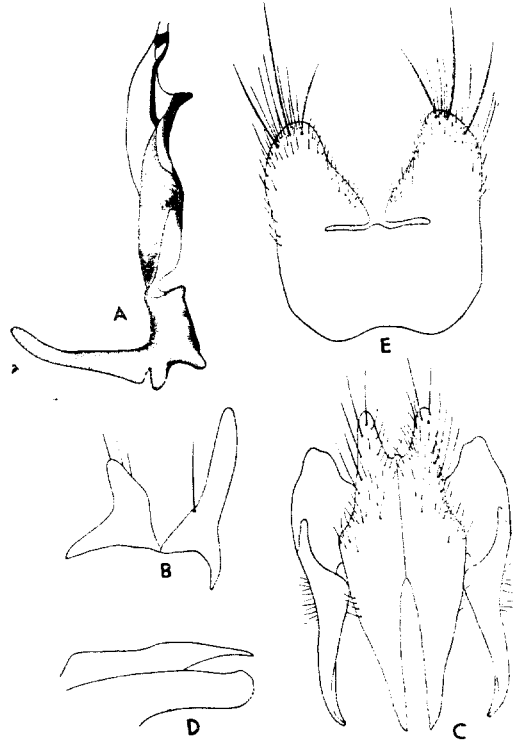


Fig. 5 *Protocalliphora azurea*.

- A: Lateral view of male penis.
- B: Lateral view of male parameres.
- C: Hind view of forceps.
- D: Lateral view of forceps.
- E: 5th sternite of male.

posterolateral surface; mid femur with a row of short bristles along distal half of anteroventral surface, 3 or 4 bristles on apical part of posterolateral surface; hind femur with a row of bristles on anterodorsal surface and a row of long bristles on anteroventral surface; hind tibia with a row of short bristles each on anterodorsal and posterodorsal surfaces.

Abdomen: Dark blue; 4th and 5th tergites with marginal bristles well developed; genital tergites as shown in Fig. 5.

Distribution: Palearctic region.

Locality: Mt. Naejang (Sun un Temple), 1♂, 25 July, 1972.

Parasarcophaga unguitigris Rohdendorf, 1938
 Trans. Sikhote-alin State Reserve, 2: 104
 (1938)

♂ body length: 14mm

Head: Frons about one-half width of one eye; frontal vitta black; parafrontals and parafacials golden pollen; antennae dark brown, with length of 3rd segment twice that of 2nd segment; frontal bristles about 10 pairs; metacephalon and genae with numerous yellowish white hairs; Palpi black.

Thorax: Scutum black with silvery to golden pollen, with 3 black longitudinal stripes; acrostichal bristles 1+1; dorsocentral bristles 5+5; intra-alar bristles 1+3; humeral bristles 3; post-humeral bristles 2; propleuron bare.

Wings: Hyaline; R4+5 with a row of about

8 short setae located dorsally extending more than half way from basal node to r-m; basicoastal scale light brown; epaulet black; squamae white.

Legs: Black; fore femur with a pair of rows of long bristles on posterodorsal surface, a row of bristles on posterior margin of ventral surface; fore tibia with 3 bristles on basal part of anterodorsal surface, a row of short bristles on posterodorsal surface; mid femur with several bristles on middle part of anterolateral surface, a row of bristles on anteroventral surface, 3 bristles on distal part of posterolateral surface; hind femur with 2 rows of bristles on anterodorsal surface, a row of bristles on anteroventral surface.

Abdomen: Black and silvery gray checkered pattern; several pairs of marginal bristles well developed on 4th and 5th tergites; 1st genital tergite black with grayish pollen; 2nd genital tergite shiny black; 5th sternite, forceps and genitalia as shown in Fig. 6.

Distribution: Japan, USSR.

Locality: Mt. Naejang, 1♂, 19 June, 1972.

ACKNOWLEDGEMENT

The author wishes to express his sincere appreciation to Dr. Satoshi Shinonaga, Tokyo Medical and Dental Univ., Tokyo, Japan, who has helped the identification of the specimens.

REFERENCES

- D'Assis Fonseca, E.C.M., 1968. Handbook for the identification of British insects. *Royal Ent. Soc. London* 10(4b): 16-27, 29-35.
 Emden, F.I. Van, 1965. The fauna of India and the adjacent countries. *Diptera (Muscidae)*,

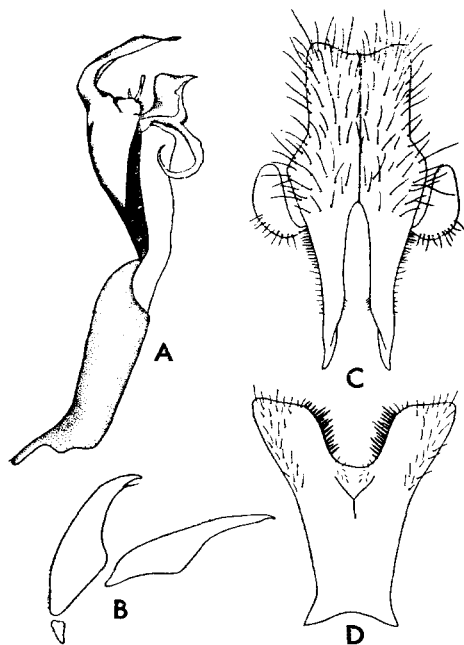


Fig. 6 *Parasarcophaga unguitigris*.
 A: Lateral view of male penis.
 B: Parameres.
 C: Forceps.
 D: 5th sternite of male.

- 7(1) : 217-282, 289-297, 325, 333-423.
- Hori, K., 1952. On Some Flies of Medical Importance obtained from Korea and adjacent districts. *J. Jap. Appl. Zool.* (in Jap.), 7(1/2) : 77-82.
- Hori, K. and Kurahashi, 1967. Three Species of Japanese *Dichaetomyia*, with descriptions of Two new species (Family Muscidae, Diptera). *Sci. Rep. Kanazawa Univ.*, 12(1) : 71.
- Kano, R. and S. Shinonaga, 1967. Fauna Japonica. *Sarcophagidae (Insecta: Diptera)* 1 : 40-42.
- _____, 1968. Fauna Japonica. *Calliphoridae (Insecta: Diptera)* 117-122.
- Shinonaga, S., 1970. Calypterate Muscoid Flies of the Island of Tsushima. *Mem. Nat. Sci. Mus., Tokyo*, 3 : 238.
- Shinonaga, S. and R. Kano, 1971. Fauna Japonica. *Muscidae (Insecta: Diptera)* 1 : 92-103, 145, 197, 217.
- Park, S.H., 1971. Illustrated Encyclopedia of Diptera of Korea. 12(4) : 949-960, 961.