

A New Species of Aphid from Mt. Hanla

Woon Hah Paik

Aphid Laboratory

Delphiniobium hanla sp. nov.

Aptera vivipara:

Color in life: Yellowish orange. Antennae black except base of antennal I and III pale, femora black with basal halves pale, tibiae pale with distal 1/4 black, tarsi and cauda black, siphunculi yellowish orange with distal 1/3 black.

Cleared specimen: Body broadly spindle-shaped. Large lateral tubercles on the pro- and meso-thorax, 0.66 mm in diamet. 8th tergite with 4 hairs. Frontal tubercles well developed, with 1-2 hairs. Antennae longer than the body, black with pale bases of antennal I and III, base of antennal III scabrous, remainder smooth, antennal III with 14-33 tubercular rhinaria of varying sizes on basal halves. Processus terminalis very long, 9-10 times as long as the base. Hairs on antennae and body are the same and as long as the basal diameter of antennal III. Last rostral segment slender, a little longer than the 2nd tarsal segment. Siphunculi 1/4-1/5 of the body length, slightly swollen at the middle part, distal 1/5 black and reticulated, with the flange. Cauda rather long, 5/8 of the siphunculi, with 6 hairs. First tarsal chaetotaxy 3:3:3.

Measurements (in m.m.)

	1	2	3	4
Body	3.16	3.72	3.24	3.74
Ant.	3.86	3.80	4.10	3.84
Siph.	0.66	0.76	0.70	0.66
Cau.	0.46	0.51	0.46	0.46

Ratio of Ant. Seg.

	III	IV	V	VI
1.	63	33	28	7+71
2.	64	33	29	7+73
3.	68	36	34	7+76
4.	64	33	29	7+65

Alata vivipara:

Color in life: Yellowish orange. Head and thorax dark. Antennae black with the bases of antennal I and II pale. Distal halves of femora, distal 1/3 of tibiae, whole tarsi, distal 2/3 of siphunculi and distal half of cauda black.

Cleared specimen: Body slender. Prothorax with large lateral tubercles, 0.07 mm in diameter. Antennae much longer than the body. Antennal III with 60-69 rhinaria over the whole length. Processus terminalis very long, 10 times as long as the base. Siphunculi slightly swollen at the middle part, black on distal 3/4 and reticulated on the distal 1/5. Behind the siphunculi rows of spinules are distributed. Cauda with 5-7 hairs, wings normal, with irregularly elongate brownish circles behind the costa. Other characters are as aptera vivipara.

Measurements (in m.m.)

	1	2	3	4
Body	71	67	68	66
Ant.	86	—	81	83
Siph.	15	12	17	13
Cau.	9	9	8	8

Ratio of Ant. Seg.

	III	IV	V	VI
1.	66	36	34	7+87
2.	64	38	—	—
3.	64	34	32	7+84
4.	64	36	32	7+86

Host plant: *Aconitum yaluense*

Collection data: No. 6439. 11 VI. '71 Mt. Hanla (700m above sea level), Cheju-do, Korea.

Notes: Collected from the upper part of flower

stems. Ants do not visit this species. Present species can be distinguished from *D. aconiti* and *D. a. sylvana* by the following characters:

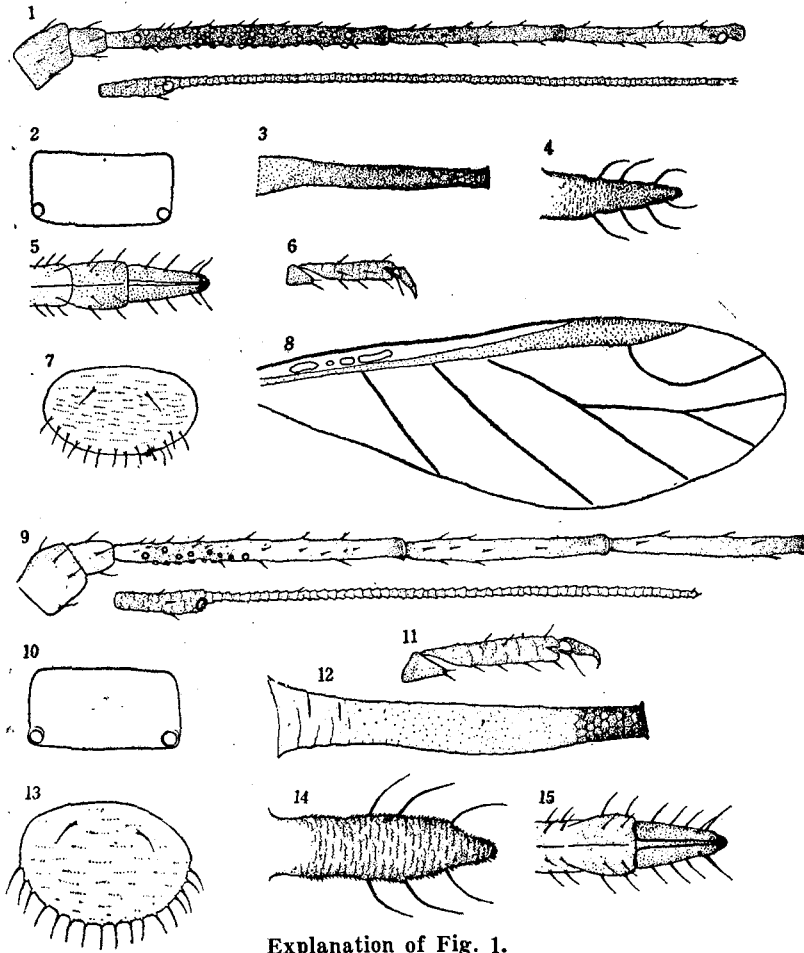
1. Color in life yellowish orange.
2. Antennae black.
3. Rhinaria on antennal III in aptera vivipara 14-33, confined to basal halves, in alata vivipara 60-69, distributed on the whole length.

Holotype: Measurement No. 4

Allotype: Measurement No. 3

Types are preserved in the Aphid Laboratory,

Suwon, Korea



Explanation of Fig. 1.

Alata vivipara (1~8)

1. Antenna 2. Prothorax 3. Siphunculus 4. Cauda 5. Last rostral segment 6. Hind tarsus 7. Genital plate 8. Forewing

Aptera vivipara (9~15)

9. Antenna 10. Prothorax 11. Hind tarsus 12. Siphunculus 13. Genital plate 14. Cauda 15. Last rostral segment