

Studies on Flies in Korea

8. On the Sarcophagid Flies on Mt. Jiri, Including the
Unreported Species, *Blaesoxipha filipjevi* Rohdendorf, 1928

Soung-Ho Park

(Dept. of Biology, Chinju Agricultural College)

한국산 파리의 연구

8. 지리산 쉬파리류와 미기록종에 관하여

박 성 호

(진주 농대 생물학 교실)

(Received February 24, 1970)

적 요

1. 1969년 4월부터 9월까지 지리산 일대의 쉬파리를 조사한 결과 22종이 밝혀졌다. 그중 *B. filipjevi*는 한국 미기록 종이 었다.
2. 우리나라 *Blaesoxipha*는 1종이 추가되어 2종이 된다.
3. 우리나라 쉬파리는 1미기록종이 추가되어 34종이 된다.

Many Sarcophagid flies were collected during the period from April to September, 1969 in the vicinity of Chinju, Kyung-nam, and on Mt. Jiri (Kokjium, Chungsanri, Bupge temple, Yupyung and Daewon temple). Of these flies, the *Blaesoxipha filipjevi* Rohdendorf was unreported species. Total number of Sarcophagid species in Korea is 34, including *Blaesoxipha filipjevi*.

The Sarcophagid flies collected on Mt. Jiri are as follows:

Bercaea haemorrhoidalis (Fall.)
Parasarcophaga kanbe (Park.)
Helicophagella melanura (Meig.)
P. macroauriculata (Ho)
Boettcherisca peregrina (R.-D.)
P. orchidea (Boett.)
Kramerea schuetzei (Kramer)
P. polystylata (Ho)
Sinonipponia musashinensis(Kano et Okazaki)

P. similis (Mead.)
P. tuberosa (Fan)
Parasarcophaga albiceps (Meig.)
Pierretia josephi (Boett.)
P. crassipalpis (Macq.)
P. kayaensis (Park)
P. gigas (Thom.)
P. ugamskii (Rohd.)
P. harpax (Pand.)
Tricholioproctia flavinervis (S.-W.)
P. kanoi (Park)
Ravinia striata (Fab.)

Description

Blaesoxipha filipjevi Rohdendorf, 1928

Male

Body length: 8 mm

Head: Frons about 1/3 width of one eye; frontal vitta black; parafrontals and parafacials with golden pollen; frontal bristles 11 pairs; lower parafacial bristles distinct; antennae brown, apex of 2nd segment light brown, with length of third a little longer than that of 2nd segment (6:5); first row of postocular setae regular; metacephalon with numerous yellowish white hairs; palpi black.

Thorax: Scutum with silvery to grayish pollen; prescutum with 3 black longitudinal stripes; acrostichal bristles 2 or 3+2; dorsocentral bristles 3+4; intra-alar bristles 1+3; post-humeral bristles 3; notopleural bristles 3; supra-alar bristles 2; post-alar bristles 2; basal scutellar and subapical bristles very long; posterior mesopleural bristles 5 or 6; hypopleural bristles about 10.

Wings: Hyaline; R4+5 with a row of about 8 short setae located dorsally extending more than half way from basal node to r-m, 3 or 4 setae on

ventral surface of radial node; squamae and halter yellowish white.

Legs: Black; fore femur with a row of bristles

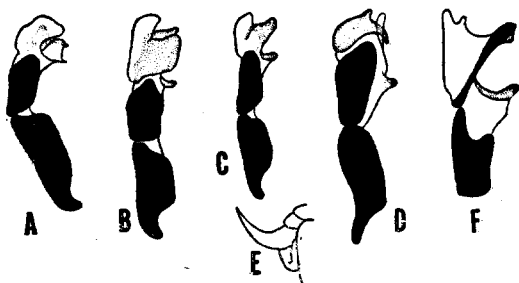


Fig. 1. *Blaesoxipha* species

- A: Male penis of *B. unguolata*.
- B: Male penis of *B. laticornis*.
- C: Male penis of *B. unicolor*. (After B. B. Rohdendorf)
- D: Male penis of *B. katoi*.
- E: Female terminalia of *B. katoi*.
- F: Male penis of *B. filipjevi*.

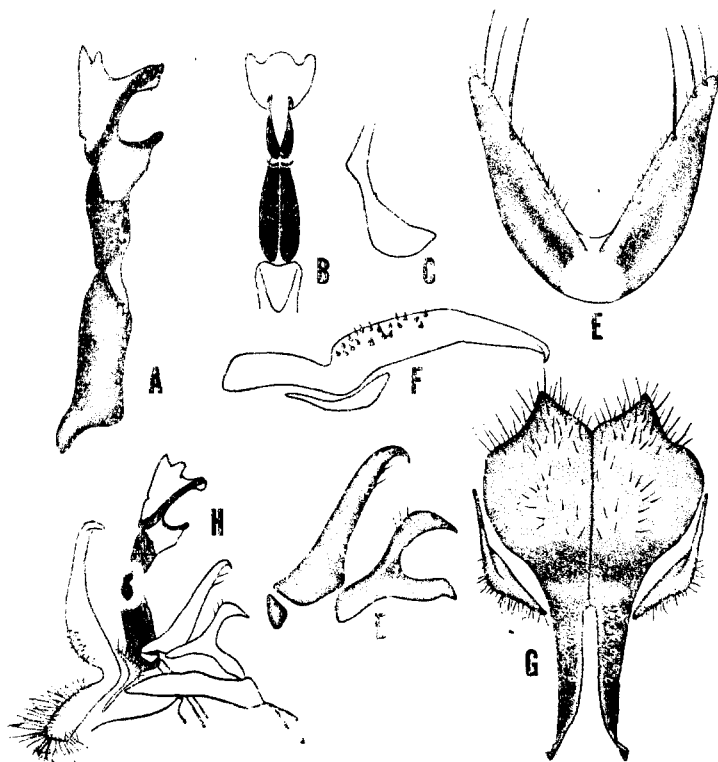


Fig. 2. *Blaesoxipha filipjevi*.

- A: Lateral view of male penis.
- B: Ventral view of male penis.
- C: Ejaculatory apodeme.
- D: Parameres.
- E: 5th sternite of male.
- F: Lateral view of forceps.
- G: Hind view of forceps.
- H: Male genitalia.

each on posterodorsal and posteroventral surface; mid femur with two bristles on posterior surface, a row of bristles from base to median part on anteroventral surface and a pair of rows of bristles on subapical part of ventral surface; hind femur with a row of bristles on posterodorsal surface, a pair of rows of bristles on ventral surface; fore tibia with 2 or 3 bristles on median part and about 5 bristles on apical part; mid tibia one bristles on median part, 3 bristles on median part and 5 bristles on apical; hind tibia with 2 bristles on median part, 3 bristles on apical part and 5 or 6 bristles on apical.

Abdomen: Black and silvery to golden checkered pattern a pair of median marginal bristles on 3rd tergite present; 3 pairs of lateral marginal bristles on 2nd and 3rd tergites developed; 3 pairs of marginal bristles on 4th tergites well developed; 1st and 2nd genital tergites dark brown and with numerous black hairs, but without marginal bristles; penis, parameres, 5th sternite and forceps as shown in Fig. 2.

Locality: Mt. Jiri (1 male)

Remarks; This species has a relatively small body and is allured to human excrements and decayed animal flesh; it was collected on a rock along a lane in a ravine.

SUMMARY

1. Twenty-two Sarcophagid flies were collected on Mt. Jiri.
2. Thirty-four Sarcophagid flies were hitherto reported in Korea, including *Blaesoxipha filipjevi*.
3. *Blaesoxipha filipjevi* is the secondary reported species of genus *Blaesoxipha* in Korea.

ACKNOWLEDGMENT

The special gratitude will be extended to Dr. Kano Rokuro, professor of Tokyo Medical and Dental University, Tokyo, Japan, who has helped the identification of the specimen.

REFERENCES

- Hori, K., 1952. On some flies of medical importance obtained from Korea and adjacent districts. *J. Jap. Appl. Zool.* (in Jap.) 7(1/2): 77-82.
- _____, 1954. Descriptions of six new species of subfamily Sarcophaginae (*Diptera: Sarcophagidae*) from Japan. *Sci. Rep. Kanazawa Univ.* 2(2): 43-50.
- Kano, R. and Shinonaga S., 1964. Notes on flies of medical importance in Japan (Part XXII). *Jap. J. Sanit. Zool.* 15(4): 1-7.
- _____, 1967. Fauna Japonica *Sarcophagidae* (*Insecta: Diptera*). *Biogeo. Soci. Jap.* Tokyo Sanko Printing, 1-168, pl. I-XLI.
- Lopes H.S., 1958. Insects of Micronesia *Diptera: Sarcophagidae*. *Ber. p. Bis. Mus.* 13(2):20-21.
- Park, S.H., 1968. Description of one new species of Sarcophagid flies from Korea. *Jap. J. Sanit. Zool.* 19(1): 1-3.
- Rohdendorf, B.B., 1928. Beitrage zur Kenntnis der Gattung *Blaesoxipha* Lw. (4. Sarcophaginen-Studien 1), *Zool. Mus. Univ. Moskau* 50: 23-28.
- _____, 1937. Faune de l' U.R.S.S. Insects *Dipteres*, XIX, 1. *Sarcophagidae* Part 1:1-501.
- _____, 1965. Composition of the Tribe sarcophagini (*Diptera, Sarcophagidae*) of Eurasia, *Revue d'Entomologie de l'U.R.S.S.*, XLIV, 3: 676-695.