

Korean Agelenidae of the Genus *Agelena*¹⁾

PAIK, Kap Yong

(Dept. of Biology, Kyungpook National University)

韓國產 풀거미屬(가게거미科)의 分類學的 研究
—3 新種과 1 未記錄種—

白 甲 篇
(慶北大·師大·生物學科)

(Received on July 30, 1965)

摘 要

풀거미屬(*Agelena*)의 거미는 1805년에 Walckenaer에 의하여 創設된 以後 오늘에 이르기까지 約 70種이 記載되었으며 東洋에서는 13種이 報告되었는데 그 大部分이 日本(6種)과 中國(4種) 産이다.

韓國產 풀거미屬은 Kambe, T. (1932), Kishida, K. (1933) 및 著者(1962) 등에 의하여 *Agelena labyrinthica*, *A. limbata*, *A. opulenta*의 3種이 報告되었다. 今般 著者 所藏의 標本을 整理 分類한 結果 1 未記錄種과 3 新種을 얻었기에 이에 記載하였다. 卽.

未記錄種 *Agelena difficilis* Fox, 1936.

新 種 *Agelena choi*, *A. koreana*, *A. jirisanensis*

※ *Agelena choi*의 種名은 趙福成博士에게 奉獻한 것이다.

The spiders belong to the genus *Agelena*, up to date, had been reported three species from Korea by Kambe, T. (1932), Kishida, K. (1933) and the author (1962). i.e.,

Agelena opulenta KAMBE, T., 1932

A. limbata KISHIDA, K., 1933

A. labyrinthica PAIK, K. Y., 1962

In the present paper are described three new species and a unrecorded species from Korea.

Types of the new species are deposited in the collection of the National Kyungpook University.

Gen. *Agelena* WALCKENAER, 1805

Tabl. Aran., p. 51

Type: *A. labyrinthica* (CLERCK)

***Agelena difficilis* FOX, 1936**

Korean name: Thare-pul-komi

(Figs. 4 & 5)

Agelena difficilis FOX, 1936, p. 121.

Female and Male: Carapace longer than width, the ratio of the head to that of thorax(h/t) is 0.54; yellowish brown with dark brown striae and margins.

1) This work was supported, in part, by the 1st bounty for Science of the Ministry of Education.

Both rows of eyes strongly procurved. Eyes on black spots. Eye ratio, PME<PLE<AME==ALE(10: 11: 13: 13). Anterior median eyes separated each other by their radius, from anterior lateral eyes by their diameter. Eyes posterior row almost equidistant, separated by the diameter of posterior median eye. Median ocular area slightly wider in front than behind in ratio 33: 31, more long than wide in ratio 35: 31. Clypeus equal to about two times the diameter of anterior median eye. Chelicerae brown, lateral condil well developed, armed with three promarginal and four retromarginal teeth. Maxilla yellowish brown. Labium dirty yellow brown, more wide than long in ratio 7: 5, Slightly exceed middle of maxillae; basal articular notches one-third its length. Sternum brownish yellow, except for the black end; heart shaped, the end produced between hind coxae. Leg yellow to yellowish brown, all patellae, tibiae and metatarsus with a faint dark annulation on the distal end. Leg formula 4,1,2,3. The number of spines on each segment as follows;

	dorsal	prolateral	retrolateral	ventral
Fem. I	1,1,1	0,1,1	1,1,1	0
II	1,1,0-1	1,1,1	0-1,1,1	0
III	1,1,0	0,1,1	0,1,1	0
IV	1,1,0	0,1,1	0,0,1	0
Tib. I	0-1,0-1	0,1,1	0	2,2,2
II	1,1	0,1,1	0,0-1,0	1,1-2,1-2
III	1,1	0,1,1	0,1,1	2,2,2
IV	1,1	0,1,1	0,1,1	1,1-2,2

Abdomen elongate oval; purplish brown to dark brown in back ground, dorsum with 5-6 pale chevrons, and a large caudal pale spot. Belly pale yellow, with a wide longitudinal median dark brown band.

Male palp: Femur and patella with two dorsal bristles. Distal edge of the patella with two black conical projections. Tibia very characteristic form, with a few dorsal bristles. Median apophysis of bulbe redish brown. Conductor consisted of a white membranous part and a black chitinous border; coiled one round and a half as a spiral stairs, and then, turned to opposite direction a half round. Embolus coiled in the same way with the conductor.

Measurement(mm.):

Body length.....	8.23
Cepharothorax length.....	3.90, width2.90
Abdomen length.....	4.64, width2.64
Sternum length.....	1.95, width1.74
Labium length.....	0.48, width0.65

	Fem.	Pat.	Tib.	Met.	Tar.	Total
Leg I	4.33	1.48	4.11	4.43	2.53	16.67
II	4.11	1.42	3.59	4.11	2.32	15.39
III	3.80	1.27	3.06	3.90	2.11	13.98
IV	4.64	1.37	4.01	5.49	2.43	17.73

Loca. Taegu(7 ♀♀, I subad. ♀, VIII '56, E.I. Paik; 1 ♂, VIII 10 '60, T.K. Kim; 1 ♀, VIII 13 '60 D.Y. Paik; 3 ♀♀, M.K. Park; 5 ♀♀, VIII 29 '59, Y.K. Kim), Kimcheon(3 ♀♀, VIII 12 '60, H.C. Lee; 6 ♀♀, VIII 5 '63, H.S. Jeon), Sangjoo(1 ♂, VIII 15 '56, I.H. Son), Yeungdeuk(4 ♀♀, VIII 15 '56, K.Y. Lee), Mt. Taeci-paik(1 ♀, VIII 14 '63, C.U. Kim), Namwon(1 ♀, VIII 11 '59, S.H. Park; 1 ♀, VIII 2 '59, Y.K. Kim), Kwangjoo(3 ♀♀, VIII 4 '62, S.C. Kim), Quelpart Isl., Samyang(1 ♀, VIII, 11 '58, Y.K. Kim; 2 ♀♀, VIII 11 '58, H.C. Lee), Dagelet Isl. (2 ♀♀, VIII, 16 '52, M.C. Lee), Kangwon do(1 ♀, VIII '55, M.C. Lee)

Dist. China(Suifu, Szechwan province)

***Agelena labyrinthica* (CLERCK, 1757)**

Korean name: Taeryuk-pul-komi.

Arcneus labyrinthica Clerck, 1757, p. 79.*Aranea labyrinthica* Linne, 1758, p. 620.*Aranea riparia* Linne, 1758, p. 620.*Aranea roeselii* Scopoli, 1763, p. 395.

Agelena labyrinthica Walckenaer, 1805, p. 51, 1825, p. 226; C.J. Sundevall, 1831, p. 129; E. Simon, 1880, p. 117; W. Bösenberg u.E. Strand, 1906, p. 297; R.V. Chamberlin, 1924, p. 24; M. Dahl, 1931, p. 13; S. Saito, 1936, p. 53, 1941, p. 36; E. Shenkel, 1937, p. 187; Locket & Millidge, 1953, p. 7; T. Yaginuma, 1958 (a), p. 72, 1958 (b), p. 11, 1958 (c), p. 13, 1960, p. 91, 1962, p. 40; K.Y. Paik, 1962, p. 77; J. Namkung, 1964, p. 42.

Loca. Taegu(4 ♀♀, 1 young ♀, 4 ♂♂, VIII 25 '56, 2 ♀♀, VIII 10 '56, 1 ♀, VIII 8 '55, 1 ♀, VIII 10 '57, 1 ♂, VII 10 '55, E. I. Paik; 1 ♂, VII 3 '55, K. Y. Paik; 1 ♀, 1 subad. ♀, 1 young ♀, 3 ♂♂, VII 9 '55, 5 ♀♀, VIII 11 '55, M.K. Park; 1 ♂, VII 10 '55, I. H. Son; 1 ♀, VIII 29 '59, Y. K. Kim; 1 ♂, VII 19 '62, S.J. Kang), Mt. Pargong(1 ♀, VIII 8 '60, Y.K. Kim), Indong, Chilkokk kun(5 ♀♀, VIII 24 '62, K. Y. Paik), Kimcheon(3 ♀♀, VIII 8 '58, 1 ♀, VIII 8 '60, H. J. Lee; 3 ♀♀, 1 ♂, VIII 23 '63, H. S. Jeon), Sangjoo (2 ♀♀, VIII 20 '56, I. H. Son; 1 ♀, VIII 17 '62, S. M. Lee), Kiran, Andong kun(4 ♀♀, 3 ♂♂, VIII 10 '63, 3 ♂♂, VIII 7 '63, 7 ♀♀, 2 ♂♂, IX 10 '63, C. S. Lee), Cheungso(6 ♀♀, 4 ♂♂, VIII 15 '57, I. C. Kim), Yeungdeuk(2 ♀♀, VIII 5 '56, M. K. Park), Mt. Ilwol(1 ♀, 1 ♂, VIII 11 '62, C. U. Kim), Chunyang (1 ♀, IX 8 '63, C.'S. Hur), Mt. So-Paik(2 ♀♀, VII 18 '57, E. I. Paik), Chungjoo(1 ♀, VII 25 '60, J. Namkung), Yong-in(1 ♂, VIII 30 '59, I. H. Yoo), Kanpo(1 ♀, VII 31 '58, T. K. Park), Mt. Sampong(2 ♀♀, VIII 8 '63, Y. K. Kim), Mt. Jiri, Cheuoneun-sa(1 ♀, VIII 7 '59, I. H. Kim; 3 ♀♀, 1 ♂, VIII 7 '59, S. H. Park), Mt. Jiri, Hwaem-sa(2 ♂♂, VII 26 '63, K. Y. Paik), Quelpart Isl., Samyang(5 ♀♀, 3 ♂♂, VIII 11 '56, E. I. Paik; 1 ♀, 1 ♂, VIII 11 '58, T. K. Park), Quelpart Isl., Seukuipo(2 ♀♀, 3 ♂♂ VIII 9 '58, H. J. Lee), Quelpart Isl., Kwaneum-sa (1 ♂, VIII 4 '55, H. J. Lee; 1 ♀, VIII 6 '58, Y. K. Kim), Quelpart Isl., Mt. Hanra(1 ♀, VIII 27 '37, K. Y. Paik; 1 ♂, VIII 4 '55, S. Y. Park; 1 ♂, VIII 8 '58, H. J. Lee), Quelpart Isl., 'Hanlim(1 ♀, VIII 1 '55, S. Y. Park), Quelpart Isl., Chejoo city(2 ♀♀, VII 25 '37, K. Y. Paik)

Dist. Korea, Quelpart Isl., Japan(Hokkaido, Honshu, Kyushu), China; widely distributed in Palaearctic region.

***Agelena limbata* (THORELL, 1897)**

Korean name: Teul-pul-komi.

Agelena limbata Thorell, 1897, p. 255; W. Bösenberg u. E. Strand, 1906, p. 296; E. Strand, 1918, p. 83; S. Saito, 1934, p. 342, 1939, p. 63, 1941, p. 37; T. Yaginuma, 1960, p. 91; K. Kishida, 1933, p. 78, 1936, p. 156; K. Y. Paik, 1954, p. 26, 1962, p. 77; K. Y. Paik & K. C. Kim, 1956, p. 49; S. Y. Park, 1957, p. 27; J. Namkung, 1964, p. 42.

Loca. Mt. Pargong(14 ♀♀, VIII 10 '60, Y. K. Kim; 1 ♀, X 21 '58, H. J. Lee), Kimcheon(24 ♀♀, 3 ♂♂, VIII '63, H. S. Jeon; 2 ♀♀, 1 ♂, VIII '60, H. J. Lee; 1 ♀, X 12 '56, S. W. Kim), Kiran, Andong kun(1 ♂, IX 10 '63, C. S. Lee), Yeungdeuk(1 ♂, VIII 5 '56, M. K. Park), Mt. Thoham(1 ♀, 1 ♂, X 24 '59), Mt. Kaya (5 ♀♀, 5 ♂♂, 1 subad. ♂, VIII 1—5 '60, 1 ♂, VII 17 '62, K. Y. Paik; 4 ♀♀, 2 ♂♂, VIII 6 '60, T. K. Park), Chunyang(2 ♀♀, IX '64, C. S. Hur), Mt. Ilwol(4 ♀♀, 2 ♂♂, VIII 11 '62, C. U. Kim; 2 ♀♀, 2 ♂♂, VIII 11 '62, M. H. Lim; 1 ♀, VIII 11 '62, E. I. Paik), Mt. So-Paik(1 ♀, VIII 2 '59, H. J. Yang; 1 ♀, VIII 15 '57, E. I. Paik; 2 ♀♀, VIII 31 '62, K. Y. Paik), Mt. Taei-Paik(1 ♂, VIII 14 '63, C. U. Kim), Mt. Sampong (1 ♀, VIII 8 '60, Y. K. Kim), Hegeni-kol, Kyeungnam(1 ♀, IX 24 '62, C. H. Kim), Namwon(13 ♀♀, 2 ♂♂, VIII 11 '59, Y. K. Kim; 5 ♀♀, VIII 11 '59, I. H. Kim), Mt. Jiri, Hwaem-sa(4 ♀♀, VIII 4 '59, 11 ♀♀, VIII 10 '59, 1 ♀, VIII 14 '59, S. H. Park; 2 ♀♀, VIII 4 '59, 9 ♀♀, VIII 10 '59, 2 ♂♂, VIII 7 '59, Y. K. Kim; 75 ♀♀, 5 young ♀♀, 26 ♂♂, VII 26—31 '63, K. Y. Paik), Mt. Jiri, Cheuoneun-sa(12 ♀♀, 5 ♂♂, VIII 7—10 '59, S. H. Park; 7 ♀♀, 1 ♂, VIII 7 '59, I. H. Kim), Mt. Jiri, Nokodan(2 ♀♀, VIII 6 '59, Y. K. Kim; 4

♀♀, 2 ♀♀, VIII 5 '59, I. H. Kim; 4 ♀♀, VIII 6 '59, S. H. Park), Chungmu(2 ♀♀, 1 ♀, VIII 2 '59, K. Y. Paik), Dagelet Isl.(5 ♀♀, 1 ♀, VIII 17 '52; 1 ♀, VIII 5 '55, I. H. Son; 1 ♀, 1 ♀, VIII 6 '62, S. H. Park), Quelpart Isl., Mt. Hanra(6 ♀♀, 1 young ♀, 2 ♀♀, VIII 6 '58, 1 ♀, 1 ♀, 1 subad. ♀, VIII 5 '55, H. J. Lee; 2 ♀♀, 3 ♀♀, VII 25 '60, 3 ♀♀, VIII 8 '58, Y. K. Kim; 2 ♀♀, VIII 3 '55, S. Y. Park), Quelpart Isl., Kwaneum-sa(12 ♀♀, 1 young ♀, 3 ♀♀, VIII 5 '59, H. J. Lee; 1 ♀, VII 21 '60, 1 ♀, VIII 6 '58, Y. K. Kim; 2 ♀♀, VIII 5 '58, M. C. Lee; 1 ♀, VIII 4 '58, E. I. Paik), Kiran, Andong kun(1 ♀, IX 10 '63, C. S. Lee)

Dist. Korea, Quelpart Isl., Dagelet Isl., Japan (Hokkaido, Honshu, Shi-Koku, Kyushu), China, Burma.

Agelena opulenta L. Koch, 1877

Korean name: Ae-pul-komi.

Agelena opulenta L. Koch, 1877, p. 757; W. Bösenberg u. E. Stsand, 1906, p. 298; S. Saito, 1934, p. 344, 1936, p. 51, 1939, p. 64, 1941, p. 38; T. Yaginuma, 1960, p. 91; T. Kambe, 1932, p. , 1933, p. 44; K. Kishida, 1936, p. 156; K. Y. Paik, 1942, p. 81 1954, p. 26, 1962, p. 77; K. Y. Paik & K. C. Kim, 1956, p. 49; S. Y. Park, 1957, p. 27; J. Namkung, 1964, p. 42; I. Fox, 1936, p. 122; E. Schenkel, 1936, p. 12.

Loca. Taegu(2 ♀♀, VIII 2 '58, 11 ♀♀, VIII 15 '59, K. Y. Paik; 1 ♀, VIII 10 '55, 11 ♀♀, 4 young ♀♀, VIII 24 '56, 25 ♀♀, IX 1—16 '56, E. I. Paik; 6 ♀♀, VIII 26 '59, Y. K. Kim), Mt. Pargong(2 ♀♀, IX 20 '52, M. C. Lee, Indong,) Chilkokk kun(2 ♀♀, 1 young ♀, VIII 24 '62, K. Y. Paik), Kasan, Chilkokk kun (5 ♀♀, X 2 '58, E. I. Paik), Mt. Keum-O(1 ♀, 1 young ♀, IX 20 '52, Y. K. Kim; 2 ♀♀, VIII 15 '62, H. C. Seu), Kimcheon(4 ♀♀, VIII 5 '60, H. J. Lee; 9 ♀♀, 1 young ♀, VIII 8 '63, H. K. Kim; 4 ♀♀, X 7 '56, S. W. Kim), Sanjoo(2 ♀♀, VIII 17 '57, 2 ♀♀, VIII 10 '56, I. H. Son), Chunyang(2 ♀♀, IX 2 '63, C. S. Hur), Mt. Kaya(1 ♀, VIII 30 '60, K. Y. Paik), Namwon(1 ♀, VIII 11 '59, S. H. Park), Kwangjoo(1 ♀, VIII '62, S. C. Kim), Haman(4 ♀♀, X 3 '63, M. R. Lee), Dagelet Isl.,(8 ♀♀, VIII 16 '52, M. C. Lee), Quelpart Isl., Han-lim(2 ♀♀, 6 young ♀♀, VIII 10 '58, H. J. Lee)

Dist. Korea, Dagelet Isl., Quelpart Isl., Japan(Hokkaido, Honshu, Shikoku, Kyushu), China.

Agelena choi sp. nov.

Korean name: Pok-pul-komi.

(Figs. 3, 8 & 9)

Female: Carapace longer than width, the ratio of the width of the head to that of thorax (h/t) is 0.55; yellowish brown, with two broad longitudinal dark brown bands and dark brown margins.

Anterior median eyes black, the others pearl-white. Posterior median eyes smallest, the remainders subequal. Eye ratio, PME<PLE<AME=ALE(10: 12: 13: 13). Anterior median eyes separated from each other by one-third their diameter, from anterior lateral eyes by the radius of anterior median eye. Posterior eyes equidistant, separated by the diameter of posterior median eyes. Median ocular area rectangle, longer than the wide in ratio 5 : 4. Clypeus equal to two times the diameter of anterior median eye. Chelicerae brown, the basal joint longer than the diameter in ratio 2 : 1; with three promarginal and four retromarginal teeth. Maxillae and labium dirty yellow brown. Labium trapezoidal, wider than long in ratio 37 : 30. The outer edges of maxillae parallel, the inner edges rather convergent in front. Sternum broad heart-shaped, widest between second and third coxae, the end produced between hind coxae.

Leg formula 4, 1, 2, 3. Legs yellow brown to pale yellow, all femorae and tibiae with two faint gray annulations and all metatarsus with a faint brown annulation on the distal end. The number of spines on each segment as follows;

		dorsal	prolateral	retrolateral	ventral
Fem.	I-II	1, 1, 0	1, 1, 1	1, 1, 1	0, 0, 0
	III	1, 0, 0	0—1, 1, 1	0, 0—1, 1	0, 0, 0
	IV	1, 0, 0	0, 1, 1	0, 0, 1	0, 0, 0
	Tib.	I	0, 0, 0	1, 1	0, 0
	II	0, 0, 0	1, 1	0, 0	1, 1—2, 0—1
	III	1, 1, 0	1, 1	0, 1	1, 1, 2
	IV	1, 1, 0	1, 1	1, 1	1, 1, 2

All patellae dark coloured and with two dorsal spines.

Abdomen elongate oval; grayish dark brown in back ground, with a series of paired pale oblique strips dorsally, the venter with a broad grayish brown median strip in yellowish brown back ground.

Epigyne similar to *A. opulenta* at a glance, but unlike in details.

Measurements(mm.): Female

Body length.....	10.55
Carapace length.....	3.90, width.....2.85
Abdomen length.....	6.96, width.....4.22
Sternum length.....	1.79, width.....1.69
Labium length.....	0.51, width.....0.63

		Fem.	Pat.	Tib.	Met.	Tar.	Total
Leg	I	3.59	1.27	3.27	3.32	2.00	13.24
	II	3.48	1.27	2.95	3.11	1.90	12.50
	III	3.27	1.16	2.64	3.06	1.69	11.61
	IV	4.22	1.27	3.69	4.64	2.11	15.61

Type locality:

Holotype: One female, Aug. 30 '60, Mt. Kaya(at 700 meter above the sea level.), collected by Kap Yong Paik.

Paratype: One female, Aug. 29 '60, Mt. Kaya, collected by Sang Mukk Lee.

Diagnosis: Present species resemble to *A. opulenta* in general aspect, but clearly differ in structure of genitalia.

***Agelena koreana* sp. nov.**

Korean name: Koreu-pul-komi

(Figs. 2, 6, 7, 12 & 13)

Male and Female: Carapace convex, longer than the width, the ratio of the width of the head to that of thorax (h/t) is 0.52; yellowish brown, with two broad longitudinal dark brown bands and no marginal band. Cervical groove and radial furrow distinct.

Both eyes row strongly procurved. Anterior median eyes black, the remainders pearl-white. Eye ratio, $PME < PLE < AME = ALE(10 : 11 : 12 : 12)$. Anterior median eyes separated from each other by their radius, from anterior lateral eyes by one-fourth of their diameter.

Posterior median eyes separated from each other by four-fifth of their diameter, from posterior lateral eyes by 0.7 times of their diameter. Median ocular area wider in behind than in front in ratio 27 : 25, more long than wide in ratio 29 : 27. Clypeus about two times the diameter of anterior median eye. Chelicerae brown, the basal joint longer than the diameter in ratio about 3 : 1; with three promarginal and four retromarginal teeth. Maxillae and labium dirty yellow-brown.

Labium more wide than long in ratio 6:5. Sternum dirty yellow-brown, except black end; broad heart shaped, longer than the width, the end produced between hind coxae.

Legs pale yellow, all tibiae and metatarsus with a faint brown annulation on the distal end. Leg formula 4, 1, 2, 3. The number of spines on each segment as follows;

		dorsal	prolateral	retrolateral	ventral
Fem.	I	1, 1, 1	0, 1, 1	0, 0, 1	0
	II-IV	1, 1, 1	0, 0, 1	0, 0, 1	0
Tib.	I	1, 0, 1	0, 1, 1	0, 0, 0	2, 2, 2
	II	1, 0, 1	0, 0-1, 1	0, 0, 0-1	1, 1, 2
	III	1, 0, 1	0, 1, 1	0, 0-1, 1	1, 1-2, 2
	IV	1, 0, 1	0, 1, 1	0, 1, 1	0-1, 1, 2

Abdomen elongate oval; dark brown with several faint pale chevrons dorsally. Venter dark brown, with white marginal strips. Spinnerets dirty yellow-brown. Anterior spinnerets consist of two segments, apical segment more shorter than the basal in ratio 8 : 1. Posterior spinnerets very longer than the anterior spinnerets in ratio 3 : 1, apical segment about 2.5 times of basal segment.

Epigyne fairly prominent, and with a large rectangular opening.

Male palp: Patella with a nipple like projection dorsally, and a black triangular projection on outside. Conductor like a fringe or feather.

Measurements(mm.): Female

Body length.....	9.51
Carapace length.....	3.38, width.....2.48
Abdomen length.....	5.91, width.....3.27
Sternum length.....	1.62, width.....1.39
Labium length.....	0.39, width.....0.51

		Fem.	Pat.	Tib.	Met.	Tar.	Total
Leg	I	3.59	1.16	3.38	3.38	1.95	13.31
	II	3.38	1.16	3.60	2.95	1.79	12.67
	III	3.17	1.06	2.64	2.95	1.58	11.19
	IV	4.01	1.16	3.69	4.43	1.90	14.93

Male

Body length.....	7.70
Carapace length.....	3.27, width.....2.64
Abdomen length.....	4.54, width.....3.27
Sternum length.....	1.66, width.....1.47
Labium length.....	0.42, width.....0.54

		Fem.	Pat.	Tib.	Met.	Tar.	Total
Leg	I	4.91	0.74	5.17	5.38	2.22	18.15
	II	4.64	0.74	4.43	4.75	2.43	16.83
	III	4.22	1.16	3.59	4.43	2.11	15.30
	IV	5.06	1.26	4.64	6.24	2.23	19.31

Type locality:

Holotype: One male, Aug. 30 '60, Mt. Kaya(at 700 meter above the sea level.), collected by Kap Yong Paik.

Paratype: Ten female and two male, Aug. 30 '60, Mt. Kaya(at 700 meter above the sea level.); One female, Aug. 5 '60, Mt. Kaya; One female, Oct. 9 '59, Mt. Kaya, collected by Kap Yong Paik; Three female and one male, Aug. 19 '60, Mt. Kaya, collected by Yong Ki Kim; One female and one male, Aug. 29 '60, Mt. Kaya, collected by Sang Mukk Lee; One female, Sep. 29 '59, Mt. Unmun(at 300 meter above the sea level.), collected by Eu In Paik; One female, Aug. 11. '62, Mt. Ilwol(at 900 meter above the sea level.), collected by Yeung Su Kim; One female Aug. 4 '59, Mt. Jiri(at 500 meter above the sea level.), collected by In Whan Kim; One male, Sep. 2 '60, Eumseung(Chung-pook), Collected by Joon Namkung.

Diagnosis: Present species resemble to *A. opulenta*, *A. jirisanensis*, and *A. Choi*, however, clearly differ in epigyne and without black border of thorax.

***Agelena jirisanensis* sp. nov.**

Korean name: Jiri-pul-komi

(Figs. 1, 10 & 11)

Female: Carapace slightly longer than the width, the ratio of the width of the head to that of thorax(h/t) is 0.55; yellowish brown, with darker striae and margins. Cervical groove and radial furrow distinct. Eyes on black spots. Anterior median eyes black, the remainders pearl-white. Both eyes row strongly procurved. Eye ratio, AME=PME<ALE=PLE(7 : 7 : 8 : 8). Anterior median eyes separated from each other by five-seventh of their diameter, from anterior lateral eyes by one-third of their diameter. Posterior median eyes separated from each other by their diameter, from posterior lateral eyes by six-seventh of their diameter. Median ocular area wider behind than in front in ratio 22 : 19, more long than wide in ratio 24 : 22.

Clypeus equal to two times the diameter of anterior median eye. Chelicerae yellowish brown, the basal joint longer than the diameter in ratio 2 : 1, claws redish brown; with three promarginal teeth and four retromarginal teeth. Maxillae yellow to whitish yellow, the outer edges parallel but the inner edges rather convergent in front. Labium dirty yellow brown, more wide than long in ratio 46 : 36, slightly exceed middle of maxillae; basal articular notches about one-sixth its length.

Sternum yellowish brown to brown, except for the black end; heart shaped, as long as wide, the end produced between hind coxae. Legs yellow to yellowish brown, all patellae, tibiae and metatarsus with a faint dark annulation on the distal end. The number of spines on each segment as follows;

		dorsal	prolateral	retrolateral	ventral
Fem.	I-II	1, 1, 0	0-1, 0-1, 1	0, 0-1, 1	0
	III-IV	1, 1, 0	0, 0-1, 1	0, 0, 1	0
Tib.	I	0-1, 0-1	0, 1, 1	0, 1, 1	2, 2, 0
	II	0-1, 0-1	0, 1, 1	0, 1, 1	1, 1, 0-1
	III-IV	1, 1	0, 1, 1	0, 1, 1	1, 1, 2

Abdomen elongate oval; dark brown to brown in back ground, dorsum with a series of pale oblique strips arranged in pairs on both sides of the median pale brown band, and a caudal light spot. Belly grayish brown, with white marginal strips. Anterior spinnerets separated each other by their radius, apical segment more shorter than the basal. Hind spinnerets very long, at least as long as two times of the anterior spinnerets; apical segment much longer than the basal. Epigyne form a semicircular depression which divided into two parts by median low ridge.

Measurements(mm.):

Body length.....	7.81
Carapace length.....	2.74, width.....2.11
Abdomen length.....	5.38, width.....2.99
Sternum length.....	1.35, width.....1.25
Labium length.....	0.36, width.....0.46

		Fem.	Pat.	Tib.	Met.	Tar.	Total
Leg.	I	2.74	0.95	2.43	2.37	1.58	9.91
	II	2.64	0.95	2.11	2.22	1.48	9.30
	III	2.43	0.84	1.79	2.22	1.27	8.44
	IV	3.06	0.95	2.64	3.27	1.64	11.35

Type locality:

Holotype: One female, Aug. 10 '59, Mt. Jiri(at 500 meter above the sea level.), collected by S.H. Park.

Paratype: One female, Aug. 10 '59, Mt. Jiri, collected by S.H. Park; One female, Aug. 10 '59, collected by Y.K. Kim.

Diagnosis: Present species resemble to *A. opulenta*, but clearly differ in epigyne.

REFERENCES

- Bösenberg, W. und E. Strand, 1906. Japonische spinnen. *Abhandl. D. Senckenb. Naturf. Ges.* 30, 96—422, 14 Pls.
- Chamberlin, R.V., 1924. Descriptions of new American and Chinese Spiders, with notes on order Chinese Species. *Pro. U.S. Nat. Mus.* 63 : 2481, 1—38, 7 Pls.
- Clerck, C., 1757. Svenska Spindlar(Aranei Suecici). *Stockholm* 1—154, 6 Pls.
- Comstock, J.H., 1940. The Spider book. (Revised and edited by W.J. Gertsch.), New York. 1—729.
- Dahl, M., 1931. Family Agelenidae. Spinnentiere oder Arachnoidea VI : 24, Tierw. Deutsch. 23 Teil, Jena. 1—46, 76 figs.
- Fox, I., 1936. Chinese spiders of the families Agelenidae, Pisauridae, and Sparassidae. *J. Washington Aca. Sci.* 26:3, 121—128, 1 Pls.
- Kambe, T., 1932. On the natural enemy to noxious insect of cotton plant in Korea. *In: The 25 th anniversary commemoration these collection of the foundation of the Su-Won College of Agr. and For.*
- , 1933. A list of spiders from Mokk-Po, Korea. *J. Nat. Hist. Chosen* 15, 44—45.
- Karsch, F., 1879. Baustoffe zur einer Spinnenfauna von Japan. *Ver. Nat. Ver. Rheinl. Westf.* 36.
- , 1881. Chinesische Myriopoden und Arachnoiden. *Berlin ent. Zeitsch.* 25, 219—220.
- Kaston, B.J., 1953. How to know the spiders. W.M.C. Brown Co., Iowa.
- Kishida, K., 1933. Spider life (Idiobiologica Araneorum.). Arus, Tokyo.
- , 1936. Spiders from Korea. *Acta Arachnol.* 1:4, 156.
- , 1955. A synopsis of spider family Agelenidae. *Acta Arachnol.* 14:1, 1—13.
- Koch, L., 1877. Japanische Arachniden und Myriopoden. *Ver. Zoo. bot. Ges. Wien* 27, 757.
- Lendl, A., 1898. Myriop. Arachn. *in: Wiss. Erg. Reise Szechenyi Ostasien* 2, 562.
- Locket, G.H. and A.F. Millidge, 1953. British Spiders II. Ray Society, London.
- Namkung, J., 1964. Spiders from Chungjoo, Korea. *Atypus* 33/34, 31—50, 40 figs.
- Paik, K.Y., 1942. A list of spiders from Mt. Tii, South Keisho-do, Korea. *Acta Arachnol.* 7:2, 80—81.
- , 1953. A list of spiders from Quelpart Isl., Korea. *Atypus* 4, 17—21.
- , 1954. A list of spiders from Dagelet Isl., Korea. *Atypus* 5, 25—27.
- , 1962. Spiders of Mt. So-Paik, Korea. *Atypus*, 26/27, 74—78, 10 figs.
- and K.C. Kim, 1956. A list of spiders from Korea. *Korean J. Biol.* 1:1, 45—70.
- Park, S.Y., 1957. On five unrecorded spiders from the Quelpart Island. *Rep. Inst. Biol. Korean Univ.* 1:2, 26—27.
- Petrunkevitch, A., 1928. Systema Araneorum. *Trans. Conn Aca. Art. Sci.* 29, 1—270.
- Roewer, C. Fr., 1954. Katalog der Araneae. 2 Bd., Abt. a, *Inst. Royal Sci. Nat. Belgique*, 1—923.
- Saito, S., 1934. Spiders from Hokkaido. *J. Fac. Agr. Hokkaido Imp. Univ.* 33, pt. V, 267—362, 4 Pls.
- , 1936. Arachnida of Jehol. *Rep. 1st Sci. Exp. Manchoukuo, Soc.* 5 Div. 1, Par. 3, 1—88, 32 Pls. 23 Text-figs.
- , 1939. On the spiders from Tohoku, Japan. *Saito Ho-on Kai Mus. Res. Bull.* 18, Zool. 6, 1—91, 1 Pls., 10 Text-figs.
- , 1941. Araneina, Arachnoidea. *Fauna Nipponica* 9, Fas. 2, No. 2, Xiii+1—220, 203 figs.
- , 1959. The Spider book illustrated in colours. Hokuryukan, Tokyo.
- Schenkel, E., 1937. Schwedisch-chinesische wissenschaftliche Expedition nach den nordwestlichen Provinzen Chinas. *Ark. Zool.* 29 a: 1, 1—314.
- , 1963. Ostasiatische Spinnen aus dem Museum D'Histoire Naturelle de Paris. *Mém. d. Mus. Nat. D'Hist. Nat.*, Zool. 25, 1—288, 161 figs.
- Scopoli, J.A., 1763. Entomologica Carniolica Vindobonae, 1—420.
- Simon, E., 1880. Arachnides recueillis aux environs de Pekin. *Ann. Soc. entoml. France*, 5 Sér., 10, 97—128, 1 Pls.
- Sundevall, C.J., 1931. Svenska Spindlarnes beskrifning. *Nova Acta Soc. Sci. Uppsal.* 108—148. Also Kongl. Svenska

Ved. Akad. Handl., 108-148.

Thorell, T., 1897. Araneae paucas Asiae Australis. Bihang till Kal. Svenska Vet.-Akad., Handl. 22, IV, Nr. 6.

Walckenaer, C.A. de, 1805. Tableau des Araneides. Paris, Xii+1-88, 9 Pls.

—————, 1825. Araneides. Faune française, etc., Paris.

Yaginuma, T., 1958(a). Spiders from Shimokita Peninsula, Aomori Prefecture, Japan. *Misc. Rep. Res. Inst. Natur. Resources* 46/47, 69-77, 29 figs.

—————, 1958(b). Spiders from Hiba-gun, Hiroshima Prefecture. II. *Miscell. Rep. Hiwa Mus. Nat. Hist.* 2, 10-12, 8 figs.

—————, 1958(c). Synopsis of Japanese Spiders. *Atypus*, 17, 9-17, 15 figs.

—————, 1960. Spiders of Japan in colour. Hoikusha, Osaka.

—————, 1962. The spider fauna of Japan. Arachnological Society of East Asia, Osaka.

Explanation of Plates

- | | | |
|-------|-----|---|
| Plate | I | <ul style="list-style-type: none"> 1. <i>Agelena jirisanensis</i> sp. nov., Female, dorsal view. 2. <i>Agelena koreana</i> sp. nov., Male, dorsal view. 3. <i>Agelena choi</i> sp. nov., Female, dorsal view. |
| Plate | II | <ul style="list-style-type: none"> 4. <i>Agelena difficilis</i> Fox, Right palpus, ectal view. 5. Same. Right palpus, ventral view. 6. <i>Agelena koreana</i> sp. nov., Left palpus, ectal view. 7. Same. Left palpus, ventral view. |
| Plate | III | <ul style="list-style-type: none"> 8. <i>Agelena choi</i> sp. nov., Epigyne. 9. Same. Genitalia. 10. <i>Agelena jirisanensis</i> sp. nov., Epigyne. 11. Same. Genitalia. 12. <i>Agelena koreana</i> sp. nov., Epigyne. 13. Same. Genitalia. |

PLATE I

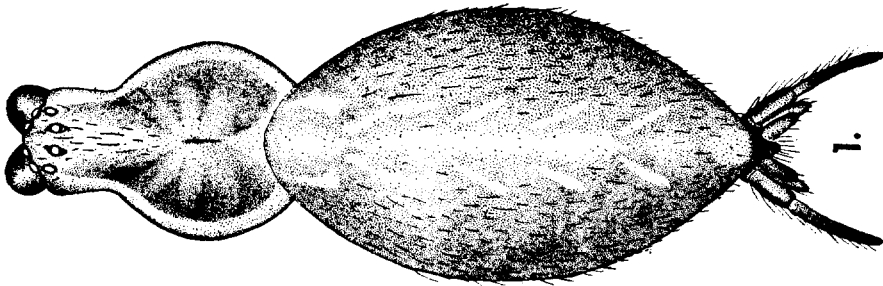
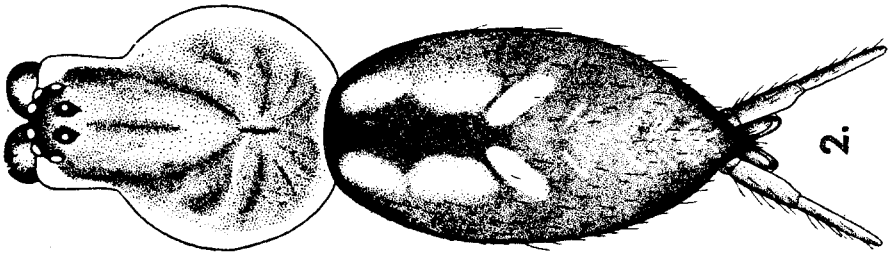
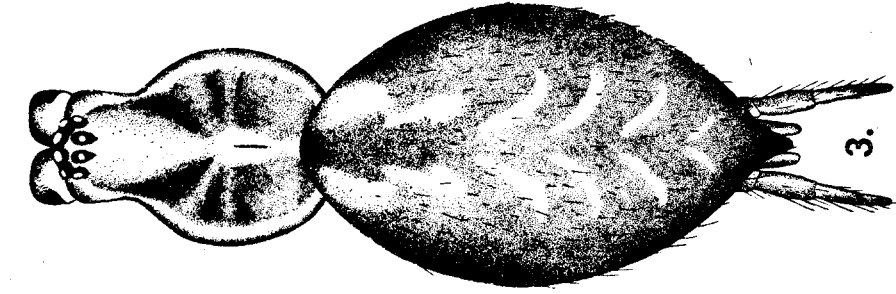


PLATE II

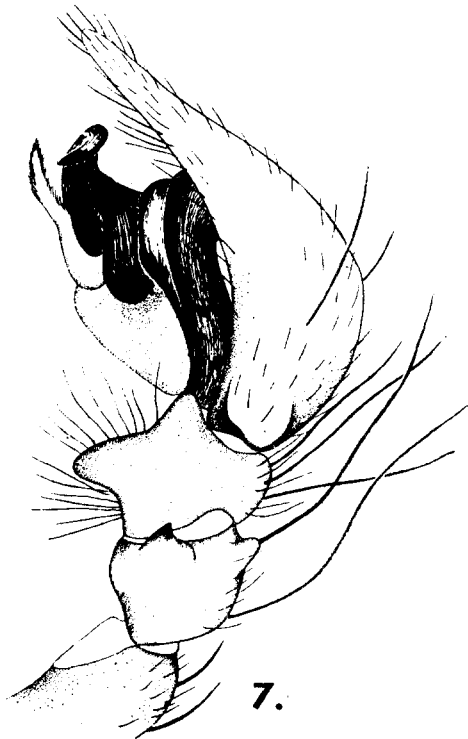
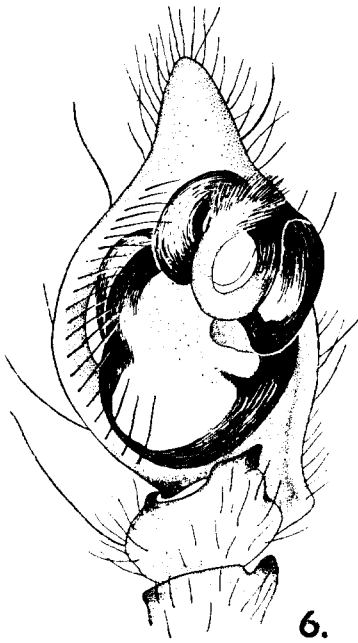
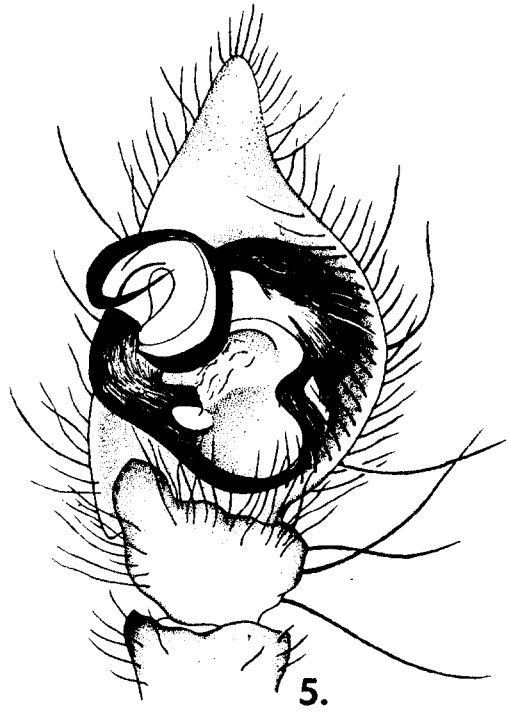
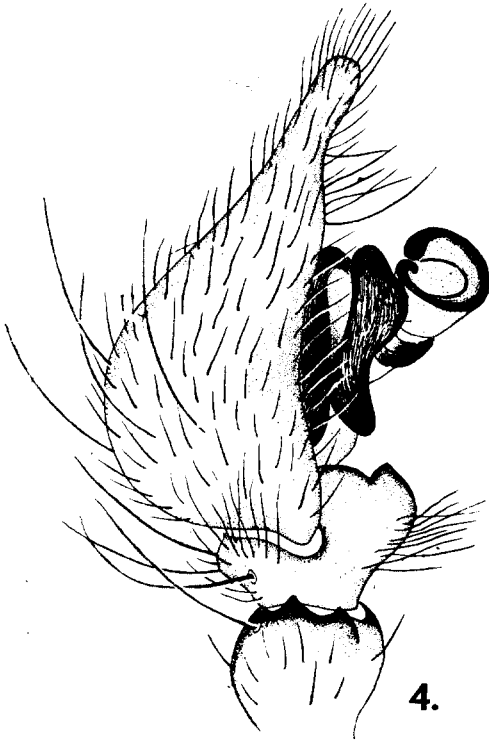
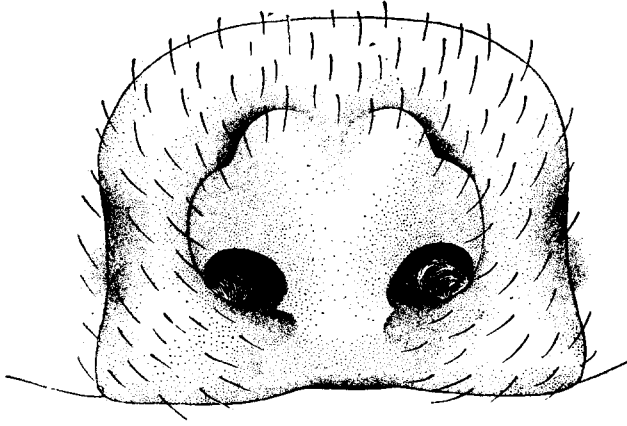
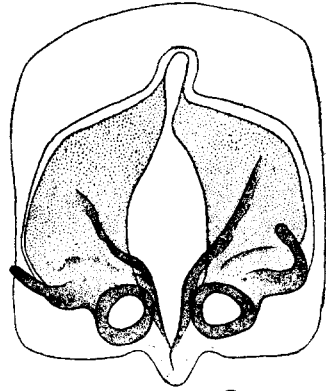


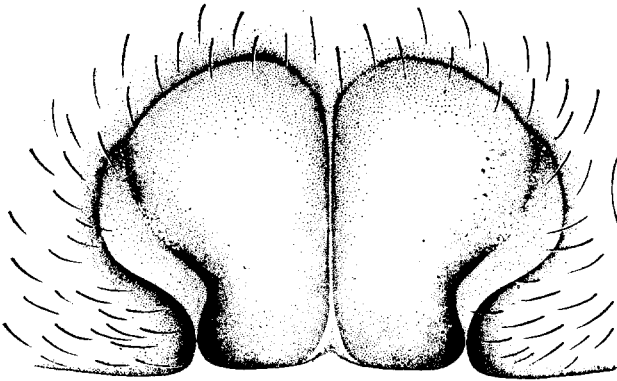
PLATE III



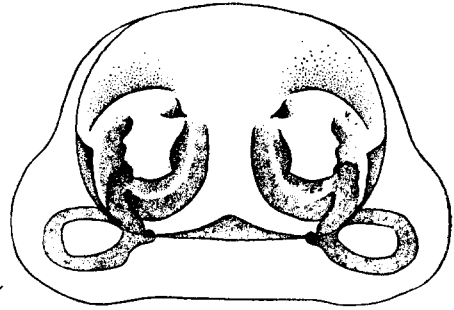
8.



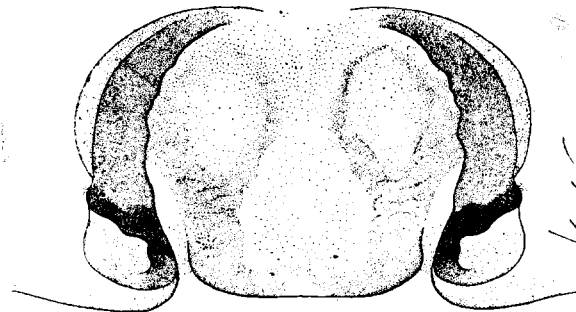
9.



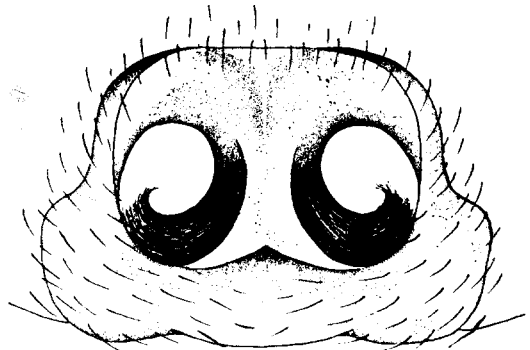
10.



13.



11.



12.