

# Studies on the Flies in Korea

## 1. Three Unreported Species of Sarcophagidae and Lucilia

PARK, Soung Ho

(Neung-Inn High School, Taegu)

韓國產 파리의 研究

第二報 韓國未記錄 *Sarcophaga* 와 *Lucilia* 三種에 關하여

朴 星 湖

(能仁中高等學校)

(Received Jan. 15, 1962)

### 摘 要

1. 1959 年에서 1960 년까지 採集된 "Calliphoridae" 標本을 再整理한 結果 *Lucilia* (금파리) 韓國 未記錄 1 種이 있었다.
2. 1961 年 7 月 21 日부터 7 月 25 日까지 忠北 俗離山에서 採集된 894 個體의 *Sarcophaga* (쉬파리) 中 2 種이 韓國未記錄이었다.
3. 以上 韓國未記錄種은 다음 三種이다. *Sarcophaga hozawai* HORI, 1954  
*S. polystylata* HO, 1934  
*Lucilia papuensis* MACQUART, 1842
4. 本 三種이 追加됨으로 韓國產 "Sarcophagidae"는 1 屬 28 種, "Calliphoridae"는 8 屬 15 種이 된다.
5. 三種의 記載는 原記載와 比較할때 地域的 差로 部分的인 相異點이 있기에 詳述했다.

During the period from 1959 to 1960, the author had made collection of blow flies in near-by Taegu and a total of 492 specimens of *Lucilia* was collected.

For five days (from 21 to 25 July, 1961), the author had made collection of flies at Mt. Song-li (Chung-pook prefecture) and a total of 894 specimens of "Sarcophagidae" was collected.

A close examination of the specimens revealed that two species of *Sarcophaga* and one species of *Lucilia* were hitherto unreported from Korea.

Species collected from Mt. Song-li are as follows:

- |  |   |
|--|---|
| 1. <i>Sarcophaga haemorrhoidalis</i> FALL., 1913 | 8. <i>Sarcophaga albiceps</i> MEIG., 1826 |
| 2. <i>S. macroauriculata</i> HO, 1932            | 9. <i>S. knabi</i> PARK, 1917             |
| 3. <i>S. harpax</i> PAND., 1896                  | 10. <i>S. kanoi</i> PARK, 1962            |
| 4. <i>S. melanura</i> MEIG., 1826                | 11. <i>S. kayaensis</i> PARK, 1962        |
| 5. <i>S. schuetzei</i> KRAM., 1909               | *12. <i>S. polystylata</i> HO, 1934       |
| *6. <i>S. hozawai</i> HORI, 1954                 | 13. <i>S. striata</i> FAB., 1794          |
| 7. <i>S. peregrina</i> R.—D., 1830               | 14. <i>S. orchidea</i> BÖTT., 1913        |

\* marks are unreported species from Korea.

1. *Sarcophaga hozawai* HORI, 1954

(Sci. Rep. Kanazawa Univ., ii, pp. 75—85)

Male

*Body length:* 13 mm*Head:* Front about 1/2 as wide as one eye; width of frontal vitta about twice that of parafrontal; antennae black, length of 2nd segment about 1/3 that of 3rd; metacephalon with grayish white hair; palpi black.*Thorax:* Acrostichals 3+1; dorcentrals 4+4.*Wings:* Costal spine indistinct; ventral side with 8 setae on the basal node of r4+5; r4+5 2 setae located dorsally about half way from basal node to r-m.*Abdomen:* 1 pair of lateral marginal bristles each on 3rd and 4th tergites; 2 or 3 pairs of lateral marginal bristles on 2nd tergite and 1 pair of median marginal bristles on 4th tergite; genitalia as shown in Fig. 1.*Localities:* 1 male, Mt. Song-li, 21—25 July, '61*Distribution:* Japan (Shiritaka, Honshu)2. *Sarcophaga polystylata* HO, 1934

(Bull. Fan. Mem. Inst. Biol., v, p. 21)

Male

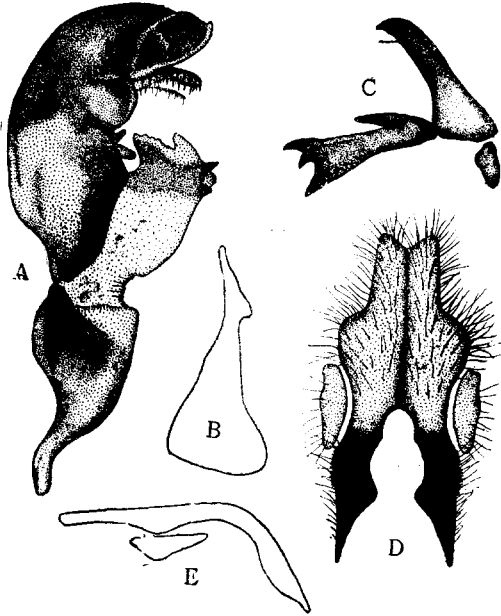
*Body length:* 15 mm*Head:* Front about 2/3 as wide as one eye; antennae black and length of 3rd segment width twice that of 2nd; a row of black setae present on postocular part distinct; palpi black.*Thorax:* Acrostichals 0+1; dorsocentrals 0-1+2.*Wings:* Costal spine distinct; r1 without setae; ventral side with 3 setae on the basal node of r4+5; r4+5 with

8 setae located dorsally about half way from basal node to r-m.

*Abdomen:* 1 pair of lateral marginal bristles each on 3rd and 4th tergites; 2-3 pairs of lateral marginal bristles on 2nd tergite and 1 pair of median marginal bristles on 4th tergite; genitalia as shown in fig. 2.*Localities:* 1 male, Mt. Song-li, 21—25 July, '61; 1 male, Mt. Ka-ya, 1—5 August, '60*Distribution:* Japan (Sendai, Aomori, Kanazawa), China3. *Lucilia papuensis* MACQUART, 1842

(Dipt. Exot., ii, p. 141)

Male

*Body length:* 7—9 mm*Head:* Eye holoptic; frontal vitta black; parafrontal grayish white; width of parafrontal vitta 2 times of frontal vitta; frontal bristles 13 pairs; antennae with brownish orange pollen, length of 3rd segment about 4 times that of 2nd; bucca with yellowish pollen and with numerous black hairs; a row of black setae present on postocular part; palpi yellow.*Thorax:* Scutum bluish-green and acrostichals 2+2; dorsocentrals 3+3.Fig. 1. Male genitalia of *S. hozawai*

A: Phallosome B: Ejaculatory apodeme C: Parameres

D: Forceps E: Lateral view of forceps

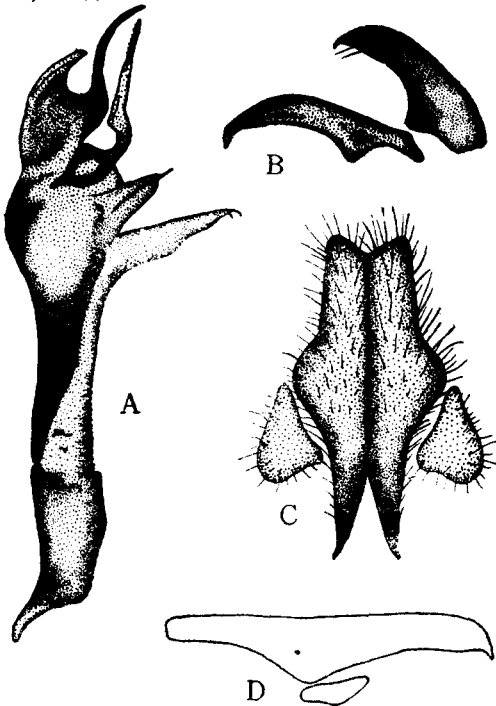


Fig. 2 Male genitalia of *S. polystylata*  
 A: Phallosome B: Parameres C: Forceps  
 D: Lateral view of forceps

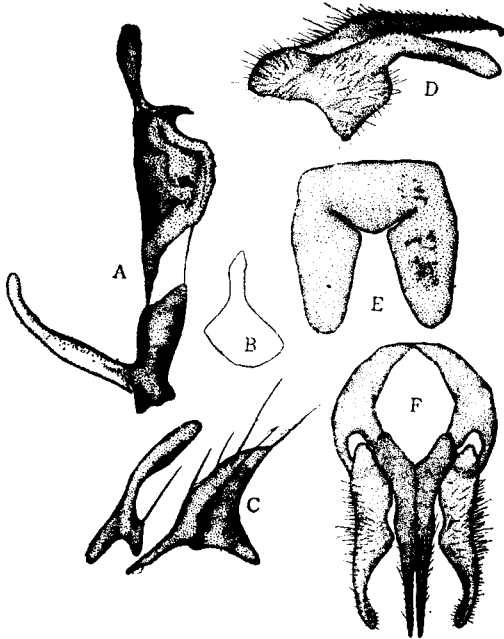


Fig. 3 Male genitalia of *Lucilia papuensis*  
 A: Phallosome B: Ejaculatory apodeme  
 C: Parameres D: Lateral view of forceps  
 E: 5th sternite F: Forceps

*Wings:* Basicosta black; squamal lobe grayish white, subcostal sclerite with setae.

*Abdomen:* 2nd tergite metallic blue and with numerous short black setae; phallosome of male genitalia related to *Lucilia caesar*; genitalia as shown in fig. 3.

*Localities:* 2 males, Mt. Ka-ya, 1-5 August, '60; 3 males, Mt. Pal-gong, 7 July, '59

With the addition of 2 species the list of Korean Sarcophagid-fly (Sarcophagidae, Diptera) collection will reach a total of 1 genus 28 species in the family of "Sarcophagidae."

The list of Korean blow-fly collection will reach a total of 8 genera 15 species in the family of "Calliphoridae."

"Sarcophagidae"

1. *Sarcophaga albiceps* MEIG., 1826
2. *S. basalis* WALK., 1859
3. *S. caudagalli* BOETT., 1912
4. *S. crassipalpis* MACQ., 1838
5. *S. haemorrhoidalis* FALL., 1816
6. *S. harpax* PAND., 1896
- \*7. *S. hozawai* HORI, 1954
8. *S. josephi* BOETT., 1912
9. *S. kanoi* PARK, 1962
10. *S. koreaensis* KANO et PARK, 1961
11. *S. kinoshitai* HORI, 1954
12. *S. kayaensis* PARK, 1962
13. *S. knabi* PARK, 1917
14. *S. macroauriculata* HO, 1932
15. *S. melanura* MEIG., 1826
16. *S. misera* WALK., 1849
17. *S. musashinensis* KANO, 1956
18. *S. orchidea* BOETT., 1913
19. *S. peregrina* R.-D., 1830
20. *S. pingi* HO, 1934
- \*21. *S. polystylata* HO, 1934
22. *S. schuetzei* KRAM., 1909
23. *S. shiritakaensis* HORI, 1954
24. *S. similis* MEAD., 1876
25. *S. striata* (FAB., 1794)
26. *S. tuberosa* PAND., 1896
27. *S. ugamskii* (ROHD., 1937)
- °28. *S. carnaria* L., 1758

\* marks are unreported species from Korea.

° mark indicates uncollected species by the author.

## "Calliphoridae"

- |  |  |
|--|--|
| 1. <i>Calliphora lata</i> COQU., 1896              | *9. <i>Lucilia papuensis</i> MACQ., 1842         |
| °2. <i>C. vomitoria</i> (L., 1758)                 | °10. <i>L. ampulacea</i> VILL., 1922             |
| °3. <i>C. erythrocephala</i>                       | 11. <i>Phaenicia sericata</i> (MEIG., 1896)      |
| 4. <i>Aldrichina grahami</i> (ALD., 1930)          | 12. <i>Chrysomya pinguis</i> (WALK., 1858)       |
| 5. <i>Triceratopyga calliphoroides</i> ROHD., 1931 | °13. <i>C. megacephala</i> (FAB., 1794)          |
| 6. <i>Lucilia caesar</i> (L., 1758)                | 14. <i>Hemipyrellia ligurriens</i> (WIED., 1830) |
| 7. <i>L. illustris</i> (MEIG., 1826)               | 15. <i>Phormia regina</i> (MEIG., 1826)          |
| 8. <i>L. porphirina</i> (WALK., 1857)              |  |

## REFERENCES

- Ch'h Ho 1932 : Notes on Sarcophagid-flies with descriptions of new species 1 : albiceps-group; Bull. Fan. Mem. Inst. Biol., iii, pp. 345—349.
- 1934 : Four new species of the genus *Sarcophaga* from Peiping, China; Bull. Mem. Inst. Biol., v, pp. 19—20.
- Hori, K. 1949 : On some common species of *Lucilia* (Diptera, Calliphoridae) from the vicinity of Tokyo; Misc. Rep. Res. Inst. Nat. Reso., No. 14, p. 14.
- 1950 : Morphological studies on muscoid flies of medical importance in Japan ii; Misc. Rep. Res. Inst. Nat. Reso., No. 16, pp. 11—23.
- 1950 : On some common Sarcophaga flies from Tokyo; Kontyu, xviii, part 2, pp. 1—3.
- 1951 : On some muscoid flies collected in the Tohoku districts, Japan; Kontyu, xix—1, pp. 24—25.
- 1951 : Morphological studies on muscoid flies of medical importance in Japan, (iii); Sci. Rep. Kanazawa Univ., 1—2, pp. 1—11.
- 1952 : On some flies of medical importance obtained from Korea and adjacent districts; J. Appl. Zool., xvii—1/2, pp. 77—82.
- 1953 : Morphological studies on muscoid flies of medical importance in Japan (iv); Sci. Rep. Kanazawa Univ., ii—1, pp. 75—85.
- 1954 : Morphological studies of muscoid flies of medical importance in Japan (vii); Sci. Rep. Kanazawa Univ., ii—1, pp. 75—85.
- Kano, R. 1951 : Classification of Japanese female blow-flies by the characters of tergites and sternites; Jap. J. Exp. Med., xxi, pp. 223—227.
- 1953 : Description of *Sarcophaga ugamskii* (ROHD., 1937) and two new species of *Sarcophaga* from Tokyo; Ibid., xxi, pp. 225—268.
- 1954 : Key to the species Sarcophagidae flies found commonly; Jap. J. Sanit. Zool., iv, pp. 291—295.
- 1956 : Descriptions of four new species and one newly found species of *Sarcophaga* from Tokyo; Bull. Tokyo Med. & Dent. Univ., iii, No. 1, pp. 73—80.
- 1957 : Japanese flies (in Jap.), Series of Sanitary insects, iii, pp. 106, DDT ass.
- 1958 : Description of *Sarcophaga* flies collected on the Yaeyama island, Ryukyu; Bull. Tokyo Med. & Dent. Univ., v—3, pp. 465—474.
- 1959 : Medical Zoology (in Jap.), Tokyo, Japan.

\* marks are unreported species from Korea.

° marks indicate uncollected species by the author.