

On a New Species, "*Drosophila ciarofinis*" sp. nov.

LEE, Tack Jun

(Department of Biology, College of Education, Kongju, Korea)

초파리 — 新種에 對하여

李 澤 俊

(公州師範大學 生物學教室)

(Received Dec. 23, 1959)

摘 要

우리말 이름 : 쌍줄무늬초파리(新稱)

1956年 9월부터 1959年 11월까지에 國內各地에서 野生초파리를 採集하여 整理한 結果는 3新種 1未記錄種을 包含한 8屬 57種 45,650個體이다.

그 中 "*Drosophila*" 屬 "*Sophophora*" 亞屬에 屬하는 一新種으로 認定되는 68個體를 1958年과 1959년에 公州, 大川, 茂朱, 雪岳山等地에서 採集하였다. 本種은 "*Drosophila nipponica*" KIKKAWA & PENG에 비슷하나 다음과 같은 特徵을 가진으로서 明確한 差異點을 가진다. 體色은 黃色, 體長은 約 1.8mm 胸背板에 不規則한 4-6列의 背毛列數를 가진다. 腹部背板의 검은 橫帶는 中間에서 넓게 끊어져 있는데 ♂은 2-5腹背板兩側に ♀은 2-6腹背板 兩側に 검은 무늬를 가진다. 그리고 外部生殖器의 把握器에는 約 10個의 強직한 검은 剛毛가 邊緣部 거리의 約 1/3을 占하고 있다. 卵은 扁平 楕圓인 두 개의 突起를 가진다.

During recent years a considerable amount of attention has been given by the *Drosophila* geneticists to field observations of "*Drosophila*."

The author continued the collection of drosophilids during a period ranging from September 1956 till November 1959 in South Korea, resulting in the capture of a total of 45650 (57 species, 8 genera) drosophilid flies involving the following four unrecorded, new species: "*Lissocephala*" sp., "*Mycodrosophila japonica*" OKADA, "*Drosophila*" sp. allied to "*D. busckii*," and a species of "*melanogaster*" group. Among these, there were found 68 specimens of the genus "*Drosophila*" which have not yet been described; they closely resemble, but clearly differ from, "*Drosophila nipponica*" KIKKAWA & PENG. The description of the characters is given below.

Here, the author wishes to offer thanks cordially to professor Sajiro Makino, Hokkaido University, for his kind leadership, and to Dr. Haruo Takada, Otaru Fisheries High School, for his kind help and valuable suggestions. Further thanks are due to Dr. M. R. Wheeler, University of Texas, for his valuable advice.

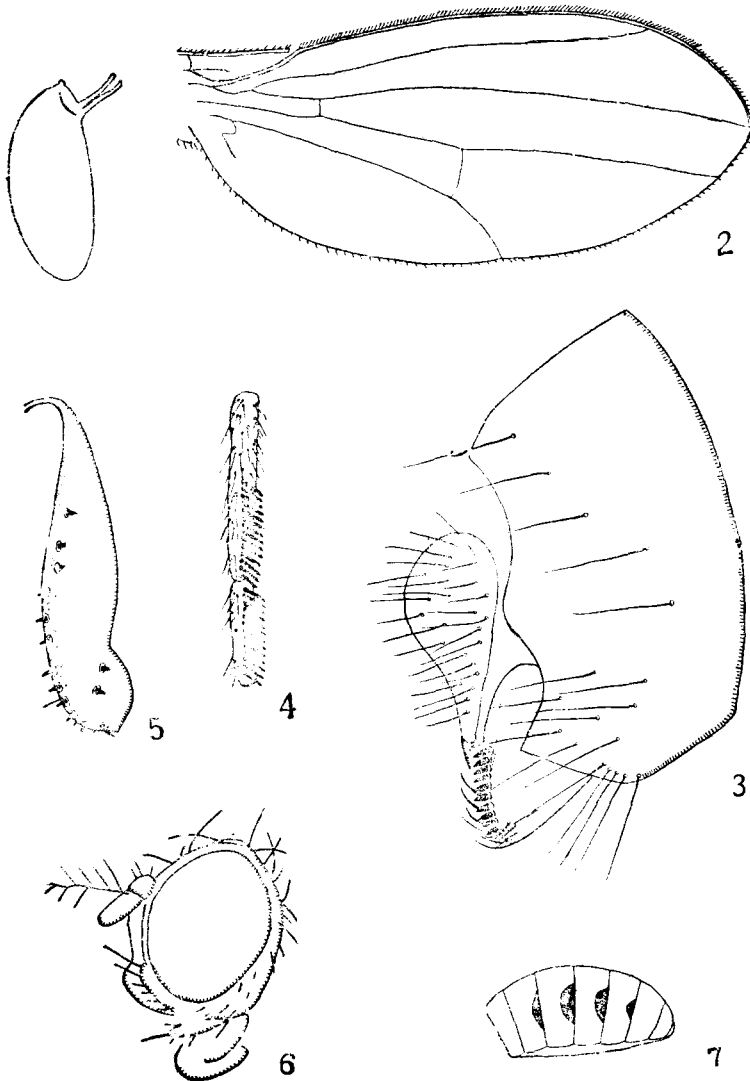
"*Drosophila (Sophophora) ciarofinis*" sp. nov. Figs. 1-7

Korean Name SSangjul-muni-chopari

♂ and ♀ : Body yellow, about 1.8mm in length. Head (Fig. 6) : Eyes red, with rough piles. Antenna yellow. Arista with about 8 branches including a small fork, 2 below it. Palpus yellow, narrow, and with a few prominent bristles. Ocellar triangle and periorbits yellow. Front yellow, about half as broad as head width Clypeus yellow. Cheeks yellow, about 1/4 as broad as the greatest diameter of eyes. Carina broad and flat. Second orbital minute, about 1/3 size of the first. Second oral about 2/3 size of

vibrissa. Occiput yellowish brown. Vertex yellow.

Mesonotum and scutellum yellow. Thoracic pleura yellow. Humeral bristles 2, upper shorter. Acrostichal hairs in 4-6 somewhat irregular rows. No prescutellar bristles. Cross distance of dorsocentral bristles slightly shorter than twice the length distance. Anterior scutellars divergent. Sterno-index about 0.3.



Figs. 1-7. "*Drosophila (sophophora) clarofinis*" sp. nov. 1; Egg; 2; Wing; 3; Periphallic organs (lateral aspect). 4; Proximal two tarsal joints of male fore leg; 5; Egg guide; 6; Head; 7; Male abdomen.

Legs yellow. Preapicals on all three tibiae, apicals on middle. Proximal two joints of fore tarsi of male with combs of about 14 and 13 black teeth respectively (Fig. 4).

Wings (Fig. 2) hyaline, veins yellow; Crossveins clear. Costal-index about 2.5; 4V-index about 1.8; 4C-index about 0.9; 5X-index about 1.6; Cl-bristles 2, subequal in size. 3rd costal section with heavy bristles on its basal $\frac{1}{3}$. Halteres greyish yellow.

Abdominal tergites yellow, with brownish black bands broadly interrupted at middle of tergites (Fig. 7)

External genital apparatus: ♂. Genital arch pale yellow, broad, upper portion with about 5 long hairs, lower portion with about 13 long hairs. Clasper broad, pale yellow, with about 10 black teeth occupying about $\frac{1}{2}$ length of distal margin clasper itself, about 10 upright setae on the inner surface and with about 3 fine hairs on the edge of distal margin. Anal plate pale yellow, separated from genital arch, prolonged at lower anterior tip, and with about 25 hairs as well as a stout greyish yellow process at the lower end (Fig. 3). Aedeagus yellow, bifid. ♀. Egg-guides (Fig. 5). Lobe narrow, pale yellow, marginally yellow, apically rounded, and with about 12 marginal and 2 discal black teeth. Basal isthmus short and narrow.

Holotype: ♂, Kongju, 18 Aug. 1953 (Lee). Deposited at the College of Education, Kongju.

Allotype: ♀, collected together with holotype. Deposited at the College of Education, Kongju,

Paratype: 3♂♂ and 2♀♀, Kongju, 5 Sept. 1958; 13♂♂ and 9♀♀, Muju, 15 Sept. 1958; 3♂♂ and 2♀♀, Daechun 26 Sept. 1958; 1♂ and 1♀, Kongju, 29 June 1959; 1♂, Mt. Sul-Ak, 18 July 1959; 14♂♂ and 11♀♀, Muju, 17 Aug. 1959; 4♂♂ and 2♀♀, Kongju, 10 Sept. 1959.

Distribution: South Korea.

Collecting methods: Net sweeping and attracted fruit-baits.

Relationships: A member of the subgenus "*Sophophora*." Resembles "*D. nipponica*" KIKKAWA & PENG, "*D. magnipectinata*" OKADA and "*D. fenestrarum*" FALLEN.

Remarks: Eggs 2 filaments (Fig. 1), but failed to breed on a culture-medium in the laboratory.

REFERENCES

- Chung, Y. J. 1955, Collection of wild *Drosophila* on Quelpart Island, Korea, D. I. S., Vol. 29, p. 111.
 _____ 1953, *Drosophilid Survey of Ten Localities, South Korea*, Kor. Jour. Zool., Vol. I, No. 2, p. 33.
 _____, Paik, Y. K., D. U. Kim and K. W. Kim, 1956, Further information regarding *Drosophilid* species in Korea, D. I. S. Vol. 30 p. 110.
 Kang, Y. S., O. K. Chung and H. Y. Lee, 1958, *Drosophilidae Species of Seoul and Adjacent Localities*, Kor. Jour. Zool., Vol. I, No. 2 p. 57.
 Kikkawa, H. and F. T. Peng, 1938, *Drosophila Species of Japan and Adjacent Localities*, Jap. Jour. Zool., Vol. 7, No. 4, p. 507
 Lee, T. J. and H. Takada, 1959, On *Mycodrosophila koreana* sp. nov. from South Korea, Annot. zool. Japan, Vol. 32. No. 2. p. 94.
 Nakayama, S. and D. Okamoto, 1940, Catalogue of the insect injurious upon fruit trees in Korea, Annal. Agric. Exp. St. Govt., Chosen Vol. 12, p. 195.
 Okada, T. 1954, Comparative Morphology of the *Drosophilid* Flies I, Kontyu Vol. 22, p. 36.
 _____ 1953, Systematic study of *Drosophilidae* and allied families of Japan. Gihodo Co., Tokyo.
 _____ and Kurckawa, H., 1955, New or Little Known Species of *Drosophilidae* of Japan, Kontyu Vol. 25, p. 1.
 Paik, Y. K. and K. W. Kim, 1957, Local Key to the family *Drosophilidae* in South Korea, D. I. S., Vol. 31, p. 153.
 Takada, H. and T. J. Lee 1958, A preliminary Survey of the *Drosophilidae* from Kongju and its Adjacent Localities, South Korea. Annot. Zool. Japan, Vol. 31, No 2, p. 113.