

IWRAP 기반의 국내 항만진입수로의 위험도 평가 및 해상교통혼잡도와와의 상관관계에 대한 연구

이의종* · 서태호** · 김진태** · 서태호** · 공인영**†

*, ** (주)세이프텍리서치

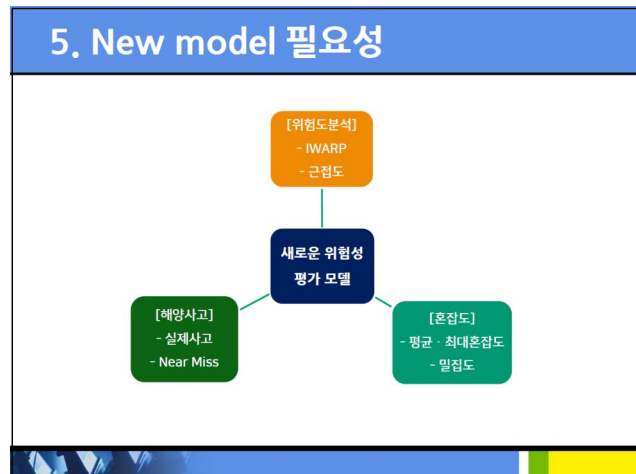
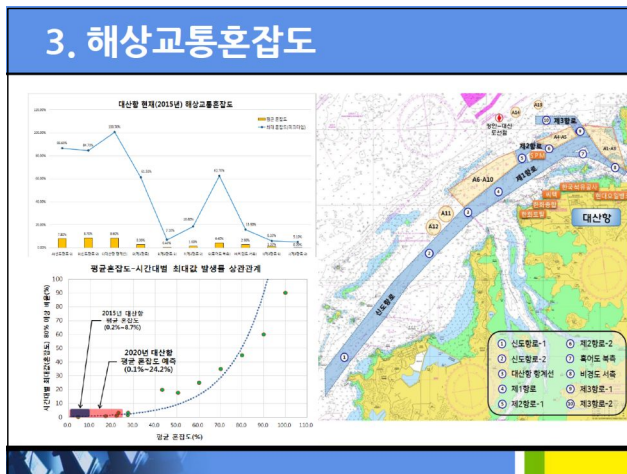
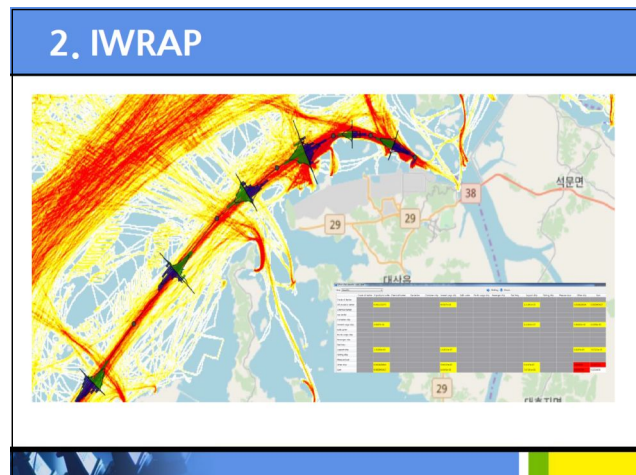
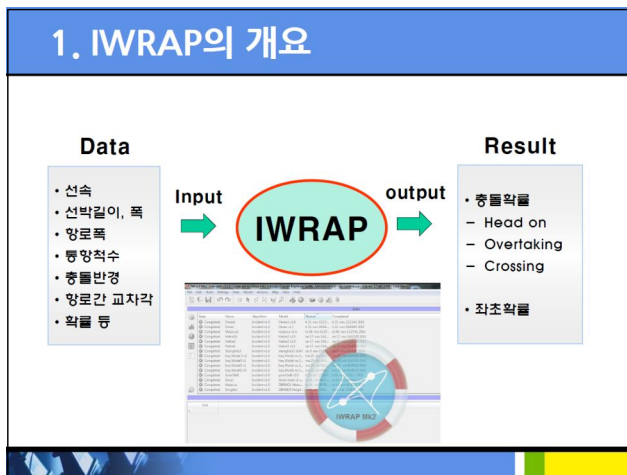
A Study on the Correlation between Maritime Traffic Congestion and Risk Assessment in IWRAP based Korea Port waterway

Eui-Jong Lee* · Tai-Ho Seo** · Jin-Tae Kim** · Gil-Sun Choi** · In-Young Gong**†

*, ** SafeTechResearch

핵심용어 : IWRAP, 해상교통혼잡도, 위험도 평가

Key Words : IWRAP, Maritime Traffic Congestion, Risk Assessment



* First Author : ejlee@strkorea.co.kr, 042-867-1854

† Corresponding Author : tachyon@strkorea.co.kr, 042-867-1850