

Establishment of Disaster Response and Safety Management Systems in LH

Sang-Yeon Kim¹

Abstract: This study is to review and re-establish LH disaster response and safety management system of the construction site and rental apartment complex in order to make an effective response and minimize damage in the face of disaster. I suggest directions for the improvement of disaster management systems. To achieve this, I reviewed the existing disaster response organization and accept opinions of the operating department in order to constitute effective organization which respond quickly and efficiently in emergency, and assigned new roles and responsibilities at each organization. Furthermore, I setup and suggested response manuals for each possible disasters.

Keywords: Disaster Response and Safety Management System, Disaster Response Organization, Response Manuals, Early Response

I. INTRODUCTION

In the meantime Korea has made continued efforts to establish the most desirable disaster management system to protect the life and property of the people. However, Korea still be experienced intermittently both man-made disasters and natural disasters that heavily damaged the life and property.

Recent SEWOL ferry disaster is a typical example of the disaster. The incident caused the Government to re-establish the national disaster response and safety management system. LH also reviewed the disaster response and safety management system and studied to re-establish the system after the incident.

The objective of this study is to review and re-establish LH disaster response and safety management system of the construction site and rental apartment complex in order to make an effective response and minimize damage in the face of disaster. I will suggest directions for the improvement of disaster management systems.

To achieve this, I reviewed the existing disaster response organization and accept opinions of the operating department in order to constitute effective organization which respond quickly and efficiently in emergency, and assigned new roles and responsibilities at each organization.

Furthermore, I setup and suggested response manuals for each possible disasters.

II. SYSTEMS OF DISASTER RESPONSE ORGANIZATION

After reviewing present disaster management system in LH, I constituted the disaster response organization focused on field staffs to respond quickly at first step as early response organization, and expanded the unit to take charge of that.

The detail organization is as following Fig-1.

III. COMPOSITION AND ROLE OF THE ORGANIZATION

1. Early Response Team

(1) Team Leader : Manager in charge the disaster field

(2) Member :

1) Staff member in charge the disaster field

2) Regional division's manager in charge of a disaster

3) The situation management team leader at each

division

(3) Duty :

1) Early treatment in one hour including golden time

2) Emergency services and first aid

3) Supporting a organize Disaster and Safety

Countermeasures Headquarters

2. Disaster and Safety Countermeasures Headquarters (Branch Office)

(1) General Manager : Director of that Regional Division

(2) Leader : Managers in that Regional Division

(3) Organization :

1) Situation Management Team

2) Recovery Support Team

3) Administrative Support Team

(4) Member :

Staff member in that Regional Division

(5) Duty :

1) Carrying out a overall task in the disaster field

2) Constituting in an hour at the disaster field

3. LH Disaster Management Committee

(1) Chairman : CEO

(2) Secretary General : Director of Construction Safety Office

(3) Member : Executive Director in charge

(4) Duty :

The supreme decision-making body for disaster response and safety management

¹ Research fellow in Land and Housing Institute, PE., 539-99 Expo-ro, Yuseoung-Gu, Daejeon City, 305-731, Korea, sy-kim@lh.or.kr, (*Corresponding Author)

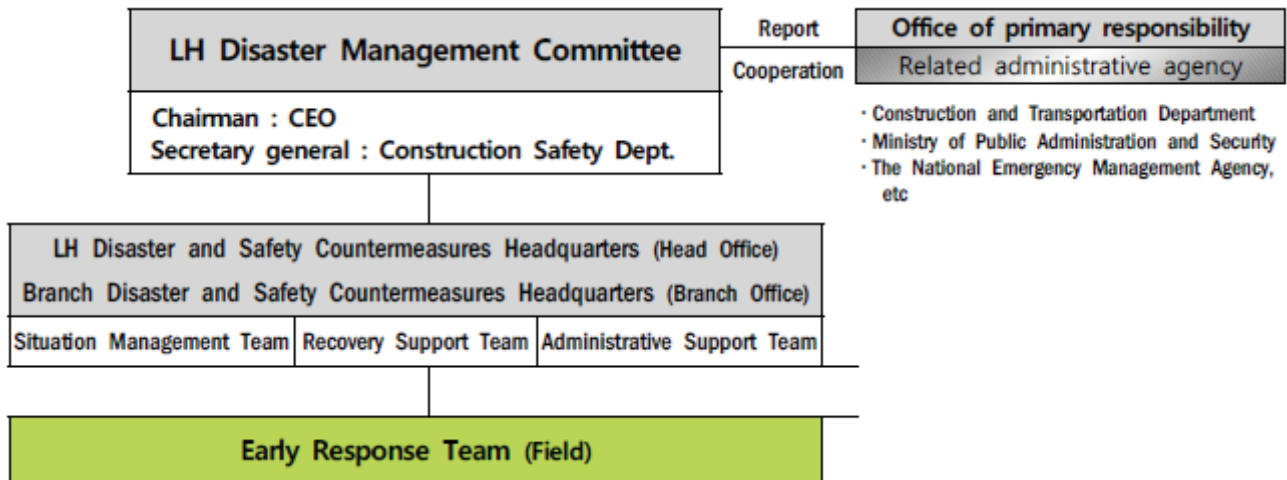


Fig-1. Organization of LH Disaster Response and Safety Management System

IV. ESTABLISHING A DISASTER RESPONSE MANUAL

1. Early Response Manual

(1) Setting a Golden Time

Cope with a golden time for twenty minutes after a disaster occurrence for normal disasters (for ten minutes after a fire occurrence).

(2) Early Response

- 1) Rapid capture of the situation
- 2) Non-proliferation
- 3) Prevention of casualties

2. Response Manual for Each Disaster

(1) Kinds of manuals

- 1) Response manual for the wind and flood
- 2) Response manual for the big earthquake
- 3) Response manual for the heavy fall of snow
- 4) Response manual for the big fire

(2) Constitution of the manual

- 1) Definition of each disaster
- 2) Type of damage for that disaster
- 3) Essential points of that disaster response
- 4) Early response for that disaster

V. CONCLUSION

In this study, I suggest a new disaster response and safety management system in order to constitute effective organization which respond quickly and efficiently in emergency, and assign new roles and responsibilities at each organization. And suggest response manuals for each possible disaster.

I hope this study will contribute to organize an efficient disaster management system, and afterwards further works can expand on the development of better system.

REFERENCES

- [1] S.Y. Kim et al, "Development LH Disaster Response and Safety Management System", LHI Strategy Study Report, 2014, 09