

# 풍력 단지 상태감시시스템 개발사례

## Development of a Wind Turbine Condition Monitoring System

김영기† · 김영민\* · 이재선\*

Young-Key Kim, Young-Min Kim, and Jae-Sun Lee

1.

가

가

가

가

가

가

IEC-61400-25-6

(Active Bin)

, 가

. ( 1)

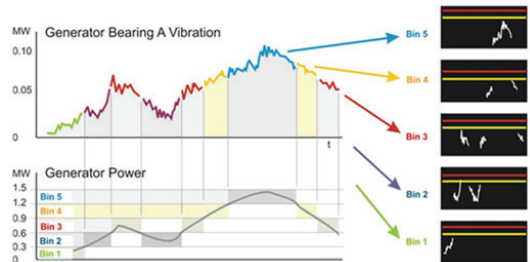
가

가

가

IEC (IEC-  
(Germanisher Lloyd)

61400-25)<sup>1</sup>  
2



1 (Active Bin)

(IEC - 61400 - 25 - 6)

3.

(Front-End),

(Client)

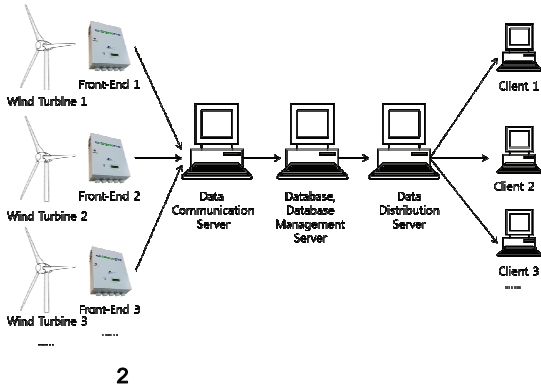
(Nacelle)

†

E-mail : youngkey@smins.co.kr  
Tel : 042-861-7004, Fax : 042-861-7008

\*

( 2 )



2

4.

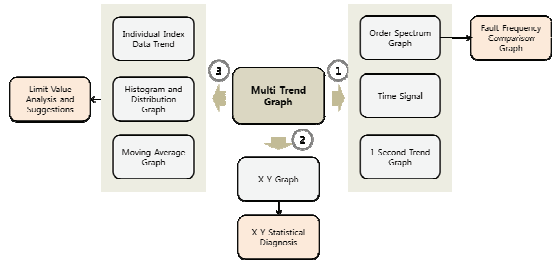
가

(Order Analysis)

5.

가

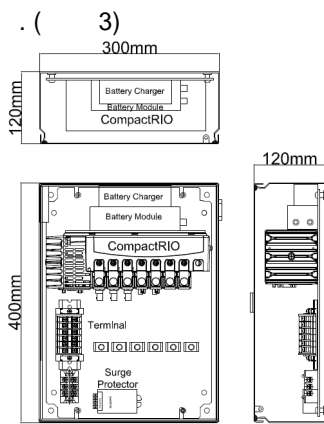
(Multi-Trend)



4

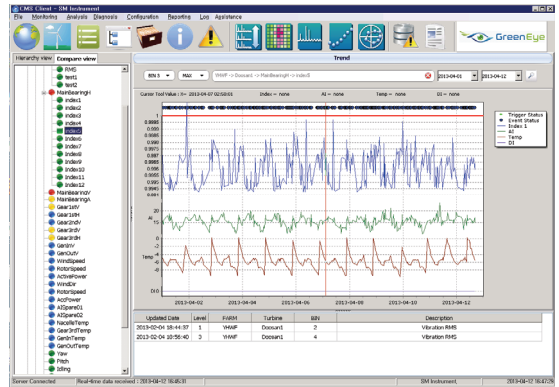
가

UPS



3

(Front - End)



5

'Multi - Trend Graph'

6.

가

2010 9

22MW

1

2 가

17

46MW

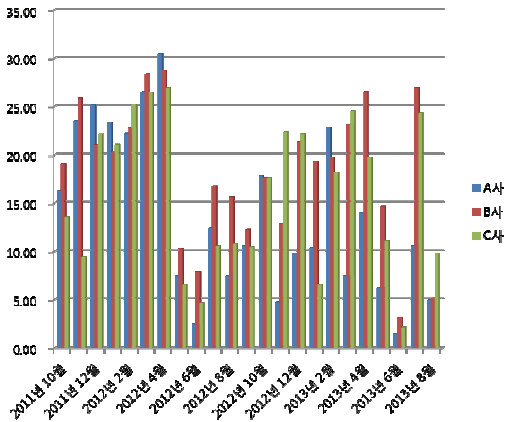
( 6 )

1 2  
7 1

and Control of Wind Power Plants – Logical Node Classes and Data Classes for Condition Monitoring, Version 61400-25-6\_R0-4WD\_2007-09-11, rev. 2 IEC-61400-25-6



6



7

(2011 10 2013 8 )

7.

가

8.

[1] Guideline for the Certification of Condition Monitoring Systems for Wind Turbines, Germanischer Lloyd, 1 May 2007

[2] IEC 61400-25-6, Communications for Monitoring