

# Recent Development of Shipping and Logistics in Mongolia

† Tumenjargal Boldbaatar, Daegwun Yoon\*, Jeong-Bin Yim\*\*

† Department of Marine Transportation Systems, Mokpo National Maritime University, Mokpo 530-729, Republic of Korea

**ABSTRACT** : Mongolia is an inland country contained between East and Central Asia. It borders Russia to the north and China to the south, east and west. Mongolia uses as international port for transit Xindang/Qingdao by railway. For domestic transport, our options are varied, which include road, railway and air modes. Mongolia's government enacted some shipping ways to develop logistics around the world. ... (omit)

**KEY WORDS** : recent, situation, Mongolia, logistics, landlocked, development...

## 1. Introduction

Mongolia is one of the largest landlocked countries in the world with an area of 1,564,100 sq.km. Mongolia has a total borderline of 8,162 km, of which 3,485 km is shared with Russian Federation to the North and the remainder with China to the East, South and West. Mongolia's economic activity depends largely on ... (omit) ...

## 2. Current situation of logistics and shipping

For domestic transport, options are varied, which include road, railway, sea and air modes.

Seaport: The only Chinese seaport currently used for Mongolian trans traffic is Tianjin port. Tianjin Free Trade Zone is divided into 4 sub-zones ... (omit) ...

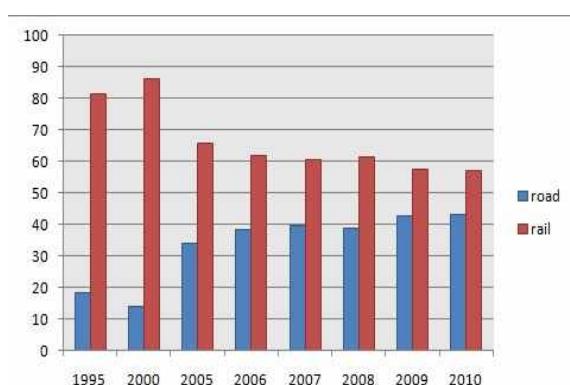


Fig 2. Freight and Passenger transportation ... (omit) ...

## 3. Development issues and Future Directions

Even though some change and innovation occurs late 5 years within the transportation, there are still many problems facing the logistics of Mongolia. Non-physical barriers such as customs clearance and border crossing procedures, as well as excessive paperwork were major impediments to landlocked developing country exploiting full potential for growth and development.

The important role of dry ports in facilitating efficient intermodal transport and logistics and serving as development catalysts where various economic and business activities were clustered.

The most important issue is to transport mineral resource of the Mongolian mines to overseas. Because of poor development of railroads ... (omit) ...

## 4. Determining the policy and the strategic plan

Mongolia efforts to build an international transport and logistics system for the region. The planned rail route, approved by Mongolia's parliament, would stretch 1,100 km to the Russian border. The railroad would use the wide gauge that is present throughout the former Soviet Union.

† Corresponding author, [tumee824@yahoo.com](mailto:tumee824@yahoo.com) 061-240-7179

\* [dvoon@mmu.ac.kr](mailto:dvoon@mmu.ac.kr) 061-240-7179

\*\* [jbyim@mmu.ac.kr](mailto:jbyim@mmu.ac.kr) 061-240-7060

rather than the narrower gauge that is used in China and many other parts of the world. The policy will be greatly ... (omit).....

## 5. Conclusion

This paper is to represents a situation of Mongolian transportation and how is going to developed. As a result, it was concluded as follows.

Some problems to the development of transportation and logistics can be determined by government's development policy suggested in the studies in so far ... (omit).....

## References

- [1] Yearly statistics of transportation in Mongolia (2008-2011) pp. 3~7.
- [2] TTL Council report (2010)...(omit)...