

R-410A 9,000Btu

A Comparison Analysis on The Vibration Test Standard and The Dynamic Characteristic Test of 9,000 Btu Military Airconditioner Applying Refrigerant R-410A

† * * **

Dongseol Choi, Wonyoung Lee, Younghun Shin and Youngtaik Lim

R-410A 9,000 Btu 2 1/2

MIL-STD-810G, 514.5C-VII Composite Wheeled Vehicle

1.

80km/h,

25km/h

2

9,000 Btu

2 1/2

R-410A

R-22

	80km/h		25km/h	
	1	2	1	2
(km/h)	80.57	80.27	23.73	23.16

1.

(2)

2 1/2

가

MIL-STD-810G 514.5C-VII Composite Wheeled Vehicle

가

MIL-STD-810G 514.5C-VII Composite Wheeled Vehicle

2.

2.1

(1)

2.2

(1)

가



1.

x, y, z

PSD

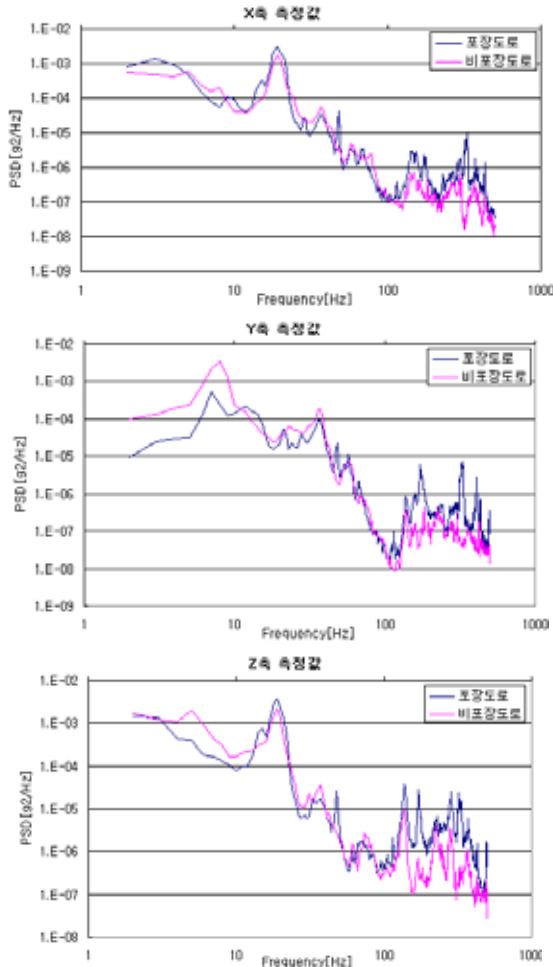
2~500Hz filtering)

(band pass

† ; LIG
E-mail : dongseolchoi@lignex1.com
Tel : (031) 288-9280, Fax : (000) 000-0000

* LIG

**



2. PSD

(2)

MIL-STD-810G Method 514.5C- , Composite wheeled vehicle 240

가

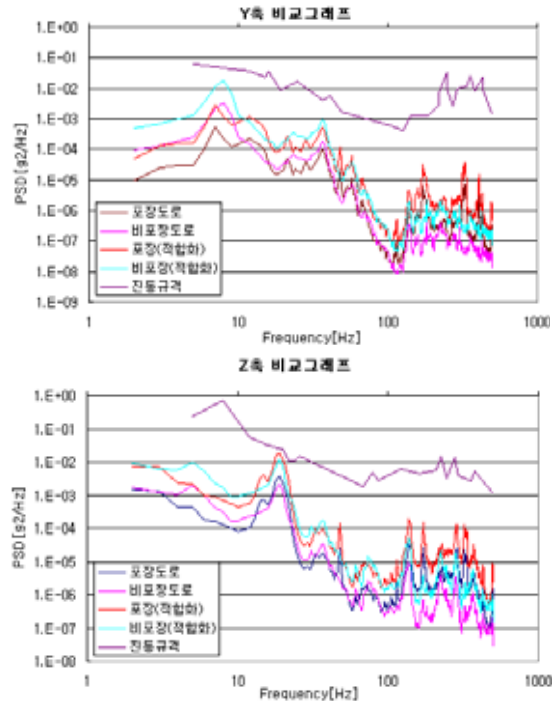
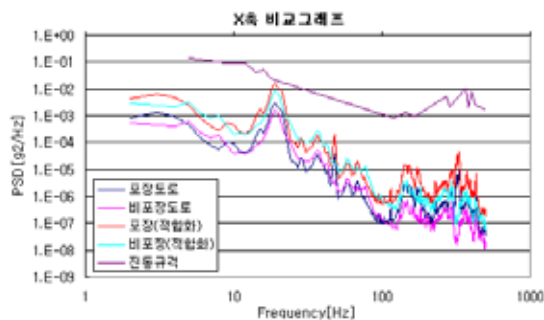
$$(W_0/W_1)=(T_1/T_0)^{1/4}$$

$W_0 =$ PSD, $W_1 =$ PSD

$T_0 =$, $T_1 =$,

$T_0 = 3,068h$

MIL-STD-810G



3.

PSD가 MIL-STD-810G Method 514.5C- , Composite wheeled vehicle PSD

3.

MIL-STD-810G Method 514.5C- , Composite wheeled vehicle

[1] MIL-STD-810G Method 514.5C- , Composite wheeled vehicle

[2]

, 2010,