

## 2.5

### The Compared Analysis of the Characteristics according to the inside construction of 2.5 Ton Military Vehicle

† . \* . \* . \*\*

DongHyouk Shim, HyoukSeok Choi, JaePil Choi, MyukSeok Cheon

#### ABSTRACT

2.5

1.

2.5

2.



1.

2.1

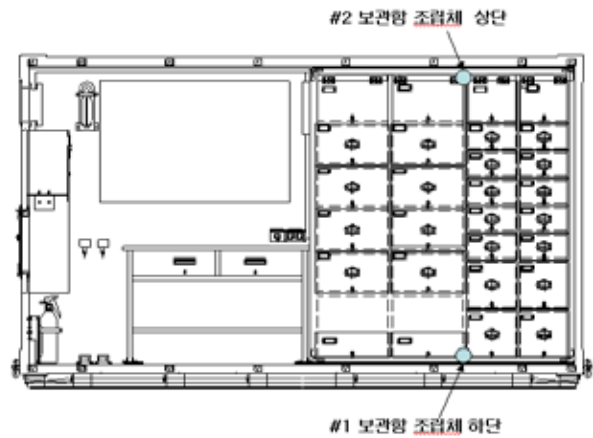
(1)

25km/h                      80km/h,  
2

	1	2	1	2
(km/h)	80.57	80.27	23.73	23.16

1.

(2)



2.

†

E-mail : shimdonghyouk@lignex1.com  
Tel : (031) -288-9781

\* LIG

\*\*

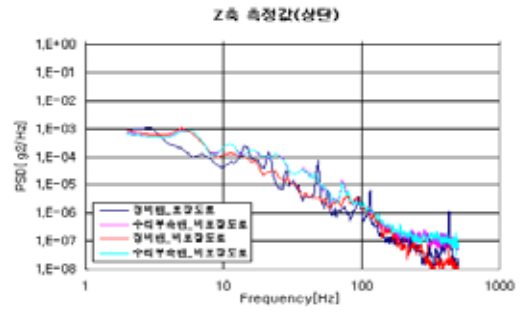
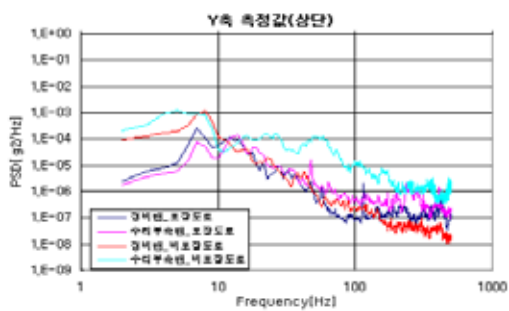
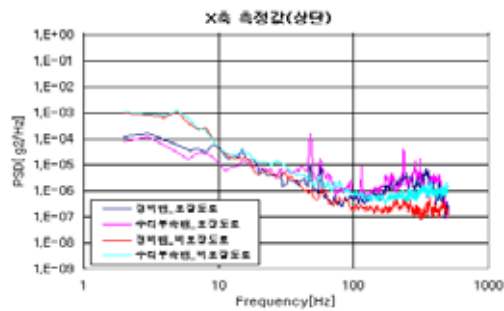
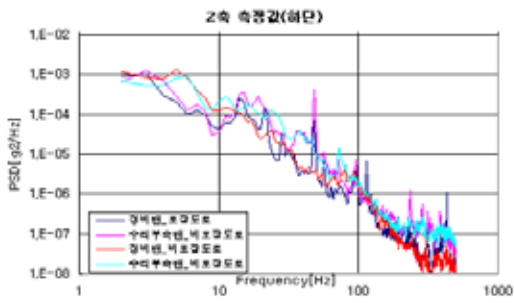
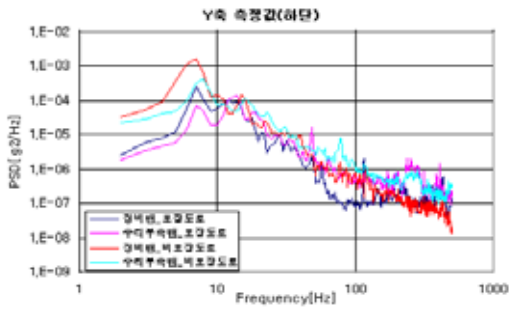
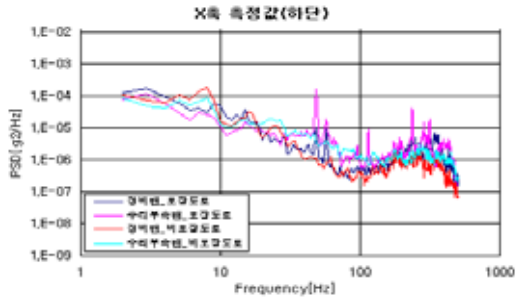
2.2

(1)

가

x (                      ), y (                      )

), z ( ) RMS, PSD  
 2~500Hz  
 (band pass filtering)



3. PSD

(2)  
 가.

가

가

3

가

3.

2.5

(1)

(2)

가

(3)

가

가