

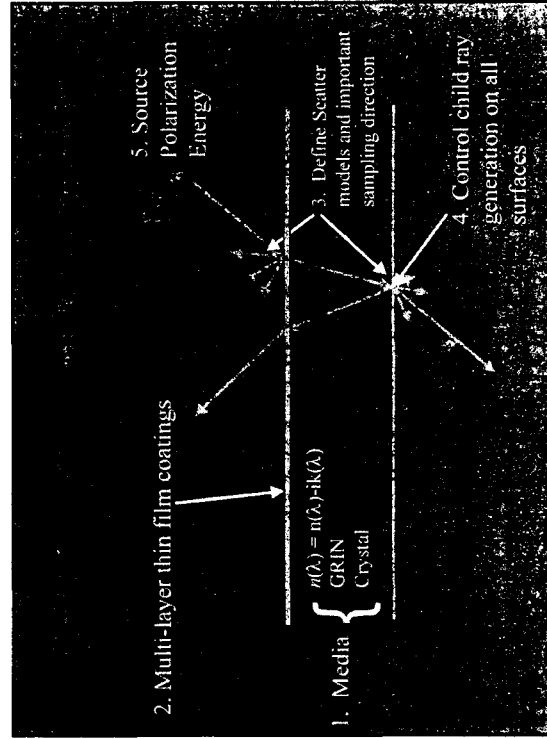
ASAP Software 를 이용한 광 구조물 설계 및
시뮬레이션 소개

I&A Technology (아이앤에이테크놀로지)

정운모 & 조진성 대리



Application: Aperture Diffraction

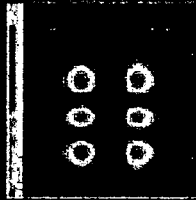
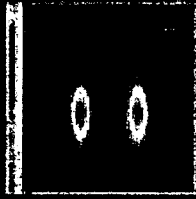
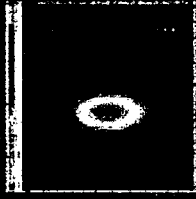


Gaussian Beams



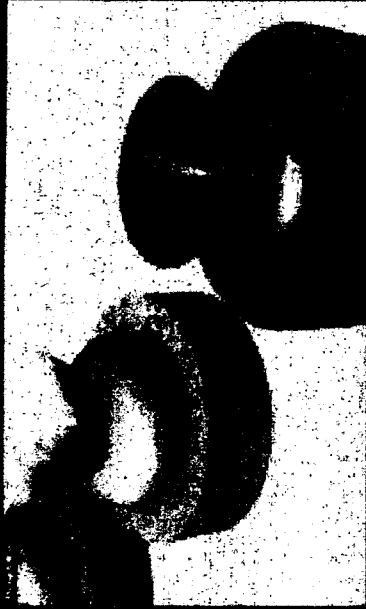
GAUSSIAN Command (long form)

$GAUSSIAN(x, y, z)$
 Beam location
 Beam direction
 Radius in each direction
 Mode specification
 Units
 If used on divergence

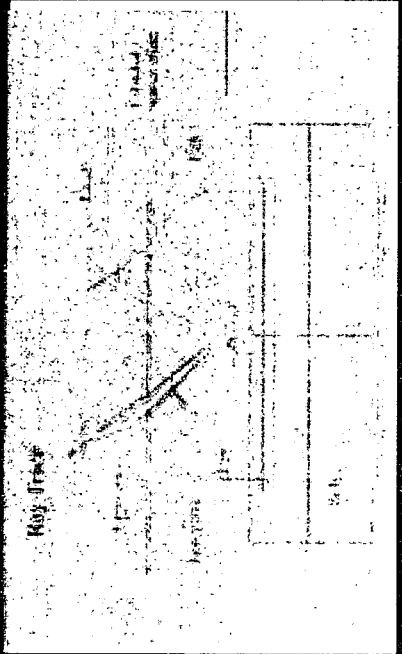


Form sources that are single Hermite-Gauss modes or the superposition of multiple modes

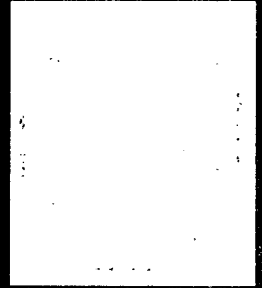
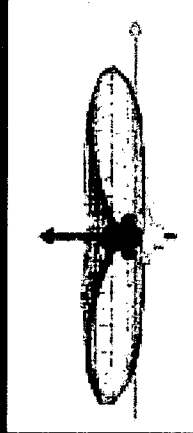
Lumileds side emitter

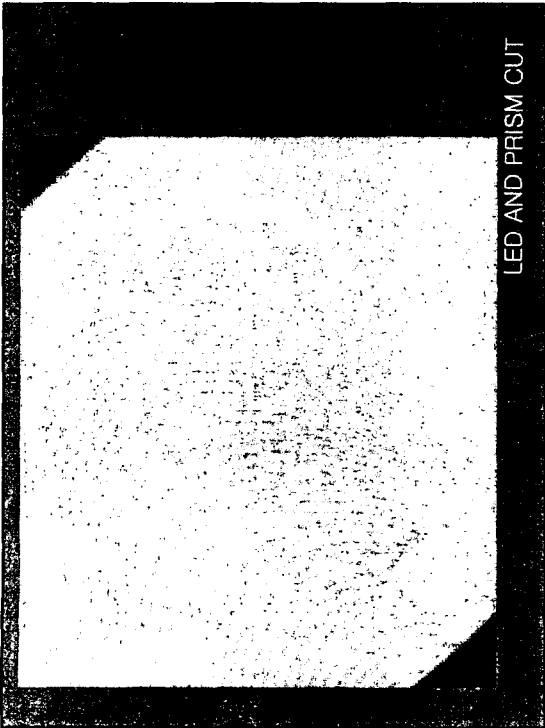


Side Emitter - Optical

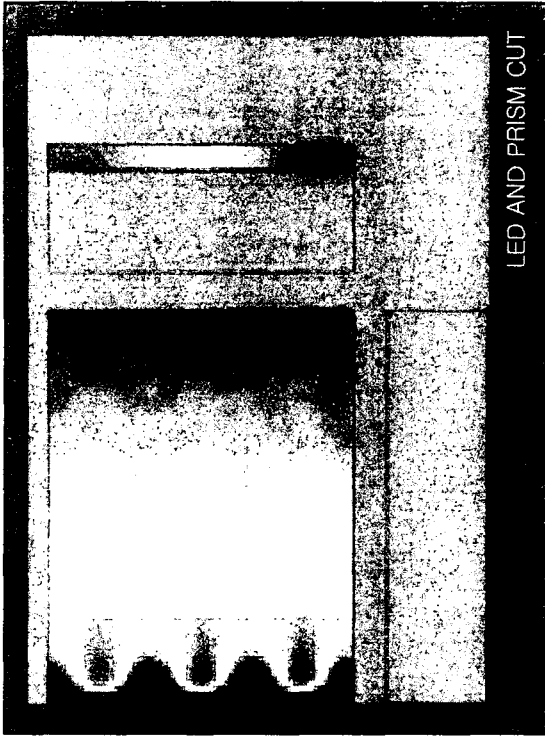


SIDE EMITTING LED BATWING TYPE EMISSION PATTERN





LED AND PRISM CUT



LED AND PRISM CUT

BACKLIGHT BASIC SPEC. FOR SIMULATION

SIMULATION MODEL : I&A

LGP thickness : 0.6 mm

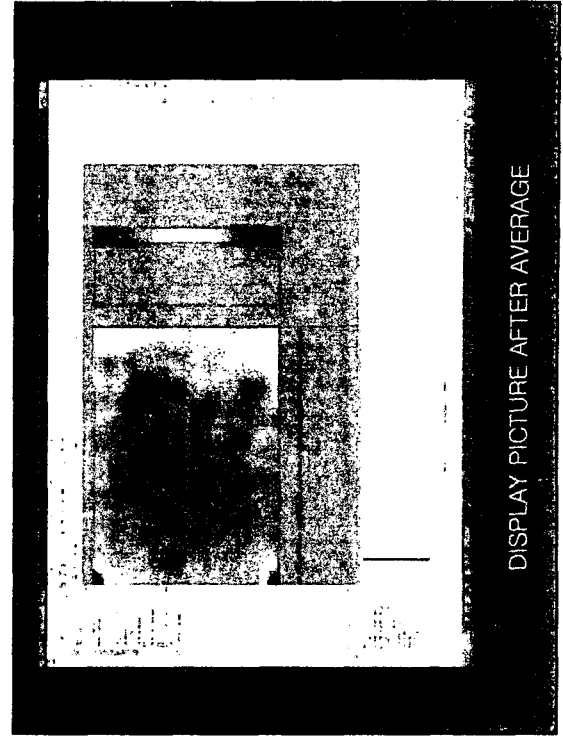
DOT size max : 0.3mm
min : 0.002 mm

DOT thickness : 0.003 mm

Note

** calculated total rays* number : 15,000,000

** used rays* number : 5,000,000



DISPLAY PICTURE AFTER AVERAGE

LED MODELING

Youn Mo, Jeong&Jin Sung, Cho

I&A Technology, Inc

