

04-1-57

### Analysis of OsMADS1 gene Expression of Korean Barley (*Hodeum vulgare* L.) T3 Liens

Ji Yong Kim<sup>1</sup>, Kang Pa Lee<sup>1</sup>, Hui Kyong Cho<sup>1</sup>, Jin Sun Kim<sup>1</sup>, Jin Woo Kim<sup>1</sup>, Hyun Jung Jung<sup>1</sup>,  
Yu Mi Jung<sup>1</sup>, Jung Hui Kim<sup>1</sup>, Tae Il Park<sup>2</sup>, Gyn Heung An<sup>3</sup> and Dae-Won Lee<sup>1\*</sup>

<sup>1</sup>Dept. of Life Science, College of Natural Science, Dongguk University, Gyeongju, 780-714 Korea, <sup>2</sup>Honam Agricultural Research Institute, NICS, 381, Iksan, Jeonbuk, Korea, <sup>3</sup>Plant Functional Genomics Lab., Dep. of Life Science, POSTECH, Pohang, Korea

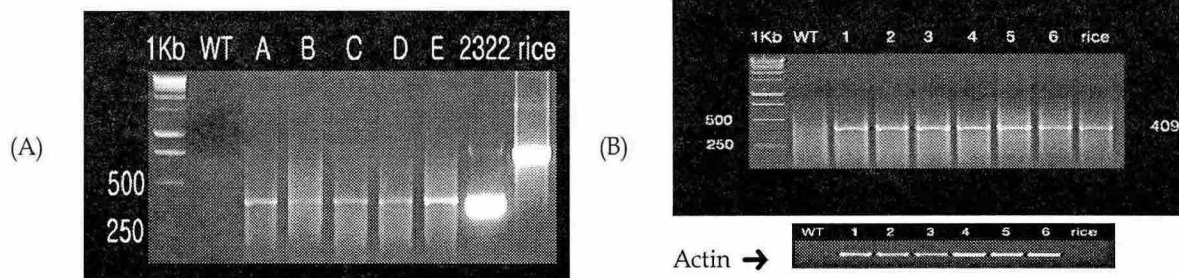
#### Objectives

This study were performed to identify OsMADS1 gene expression of T2 & T3 Barley lines. After DNA analysis of T2 lines with PCR, OsMADS1 gene Expression was identified RT-PCR (T3 lines).

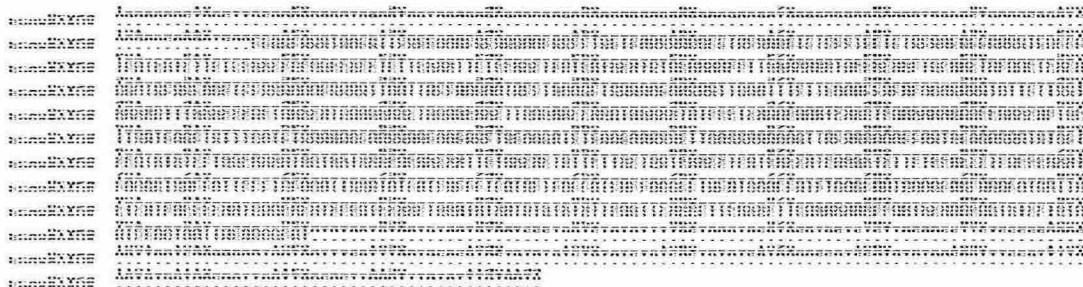
#### Materials and Methods

1. Plant materials : T2 & T3 lines of Danwonbori & Jinyangbori  
Vector : pGA2322 (OsMADS1 gene)
2. Methods : PCR, RT-PCR, sequencing analysis
  - DNA & RNA extraction
  - PCR & RT-PCR
  - Sequencing analysis of OsMADS1 gene from transgenic lines

#### Results and Discussion



**Fig 1.** Electrophoresis patterns of PCR (A) & RT-PCR (B) analysis of transgenic lines.  
(A) verification of transgenic lines: WT-wild type, A~E - transgenic lines, 2322 - positive control.  
(B) RT-PCR: WT - wilde type, 1~6 - transgenic lines.



**Fig 2.** Analysis of OsMADS1 gene full sequence of transgenic barley plants