

【S-8】

**Spontaneous Neoplastic Lesions and Test Article Induced
Neoplastic Lesions in P53 Mice and rasH2 Mice**

Peter Mann, DVM, Ph.D.

EPL, USA

Several strains of genetically engineered mice are currently being used as alternatives to long term carcinogenesis studies for submission to regulatory agencies. The most commonly used mice include the p53 heterozygous knockout mouse, the Tg.AC transgenic mouse and the rasH2 transgenic mouse. Each of these models has specific genetic modifications which make them attractive for the study of carcinogenicity of novel xenobiotics.

The background and utility of each model will be discussed. Common spontaneous and induced lesions will be covered in detail. Finally, the acceptance of these models by regulatory agencies in several countries will be addressed.

Genetically Engineered Mice in Toxicology

Peter C Mann, D.V.M.
 EPL NorthEast
 Galena, MD
 pmann@epl-inc.com

Major Players in Genetically Engineered Mice, Toxicology Division

- Tg AC
- p53 +/-
- rasH2

EPL

Principal Hypothesis

- Transgenic mice with specific genetic alterations critical to tumorigenesis but which are insufficient to induce neoplasms in a specified time are candidates for rapid cancer bioassays
- Exposure to transpecies carcinogens will result in rapid induction of tumors

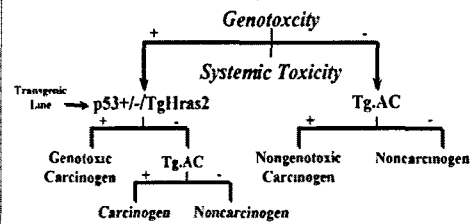
EPL

Protocols

- Typical protocol calls for a 6-month exposure
- All protocols are based primarily on reduced latency to tumor development
- Spontaneous/background tumors very rare prior to 12 months

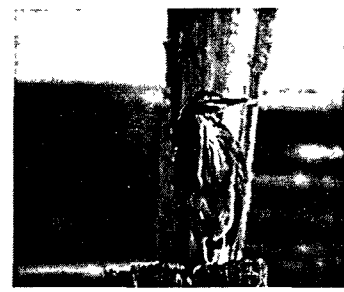
EPL

Use of Transgenic Models in Drug and Chemical Safety Evaluation



Decision tree for use of transgenic mouse lines to complement conventional rodent bioassays (Adapted from Leimert et al., 1995)

EPL



EPL

Tg.AC Transgenic Mouse

- Mutated Harvey-ras oncogene
- Multiple copies on chromosome 11
- Expression of transgene is inducible
- Expresses in skin - genetically initiated
- Induction of papillomas - reporter phenotype
- Detects both mutagenic and non-mutagenic agents

EPL

Tumors in Tg.AC Transgenic Mice
Spontaneous Tumors

- Odontogenic Tumor
- Forestomach Papilloma
- Skin Papilloma
- Skin Carcinoma
- Lung A/B Adenoma
- Lung A/B Carcinoma
- Salivary Gland Duct Carcinoma
- Erythroleukemia
- Ovary Teratoma
- Malignant Lymphoma
- Endometrial Adenoma
- Uterine Histiocytic Sarcoma
- Intestinal Carcinoma
- Subcutis Mast Cell Tumor

EPL

Tumors in Tg.AC Transgenic Mice
Induced Tumors

- Skin SOA - Papilloma/Keratoacanthoma
- Skin SOA - Squamous Cell Carcinoma
- Forestomach - Squamous Cell Papilloma
- Lung - Adenoma/Carcinoma
- Systemic - Malignant Lymphoma
- Systemic - Myelodysplasia

EPL

Tumors in Tg.AC Transgenic Mice
Spontaneous Tumor Incidence

	Males	Females
Odontogenic Tumors	13%	17%
Forestomach Papilloma	7%	10%
Skin Papilloma	4%	4%
Skin Carcinoma	-	0.5%

EPL

Tumors in Tg.AC Transgenic Mice
Spontaneous Tumor Incidence

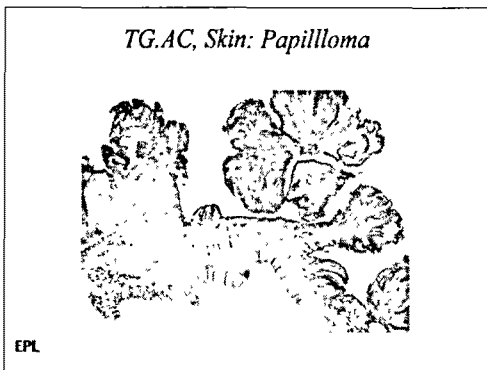
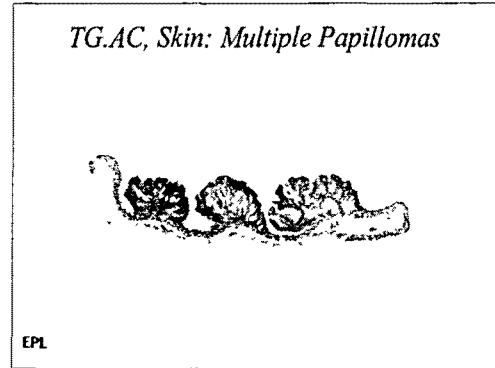
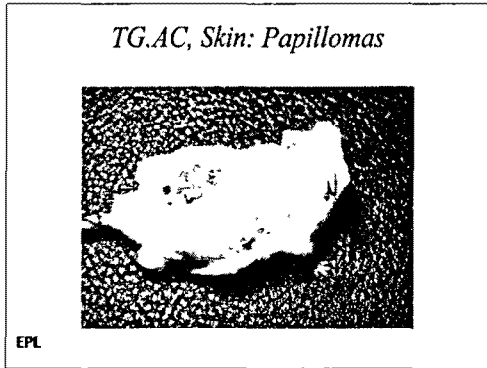
	Males	Females
Lung A/B Adenoma	4%	2%
Salivary Gland Duct Carcinoma	1%	2%
Erythroleukemia	1%	2%
Malignant Lymphoma	-	1%

EPL

Tumors in Tg.AC Transgenic Mice

Skin Tumors

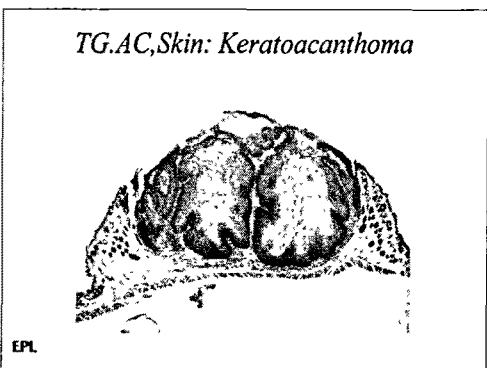
- PAPILOMA
- KERATOACANTHOMA
- SQUAMOUS CELL CARCINOMA



Tumors in Tg.AC Transgenic Mice

Skin Tumors

- PAPILOMA
- KERATOACANTHOMA
- SQUAMOUS CELL CARCINOMA



Tumors in Tg.AC Transgenic Mice

Skin Tumors

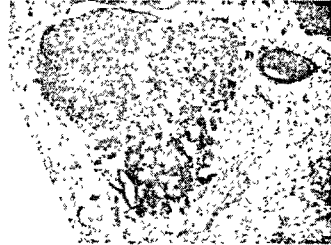
- PAPILOMA
- KERATOACANTHOMA
- SQUAMOUS CELL CARCINOMA

TG.AC, Skin: Squamous Cell Carcinoma



EPL

TG.AC, Lung: Metastatic Squamous Cell Carcinoma from Skin



EPL

Tumors in Tg.AC Transgenic Mice

· PAPILOMA, VULVA

EPL

TG.AC, Vulva: Papilloma



EPL

Tumors in Tg.AC Transgenic Mice

· ODONTOGENIC TUMORS

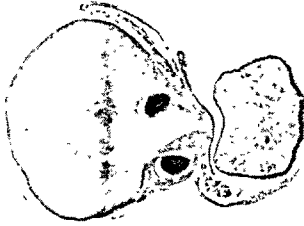
EPL

TG.AC: Odontogenic Tumor



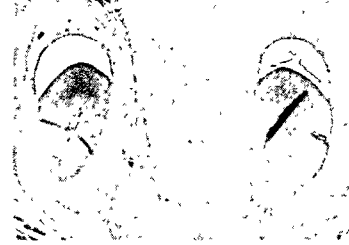
EPL

TG.AC, Tooth: Odontogenic Tumor



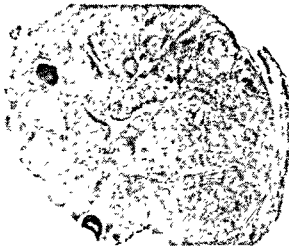
EPL

TG.AC, Tooth: Odontogenic Tumor



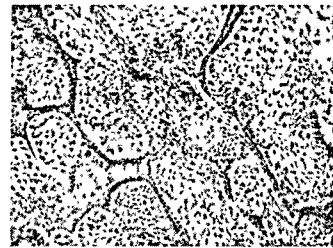
EPL

TG.AC Tooth: Adamantinoma



EPL

TG.AC Tooth: Adamantinoma



EPL

TG.AC, Tooth: Odontogenic Tumor



EPL

TG.AC, Tooth: Odontogenic Tumor



EPL

Tumors in Tg.AC Transgenic Mice

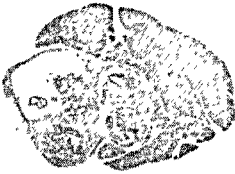
- SALIVARY GLAND DUCT CARCINOMA

TG.AC: Salivary Gland Tumor



EPL

TG.AC, Salivary Gland: Carcinoma



EPL

TG.AC, Salivary Gland: Carcinoma

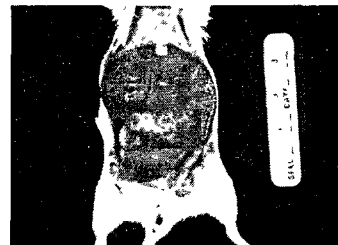


EPL

Tumors in Tg.AC Transgenic Mice

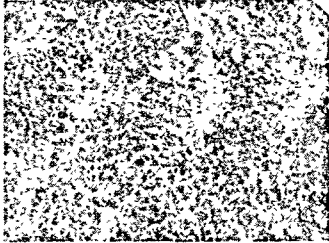
- ERYTHROLEUKEMIA

TG.AC: Erythroleukemia



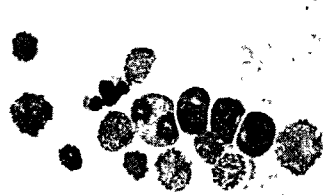
EPL

TG.AC, Liver: Erythroleukemia



EPL

TG.AC, Blood: Erythroleukemia



EPL

Tumors in Tg.AC Transgenic Mice

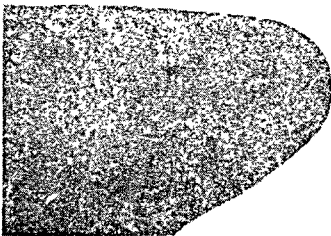
- MALIGNANT LYMPHOMA

TG.AC, Thymus: Malignant Lymphoma



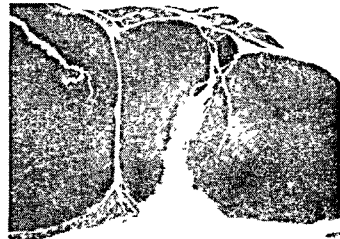
EPL

TG.AC, Spleen: Lymphoma



EPL

TG.AC, Lymph Node: Lymphoma



EPL

Tumors in Tg.AC Transgenic Mice

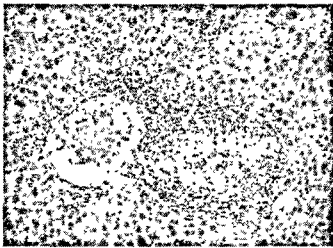
• MYELOYDYSPLASIA

TG.AC, Liver: Myelodysplasia



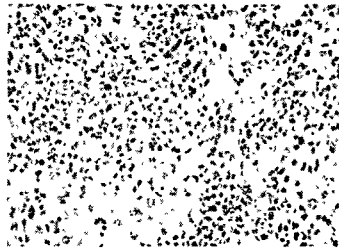
EPL

TG.AC, Liver: Myelodysplasia



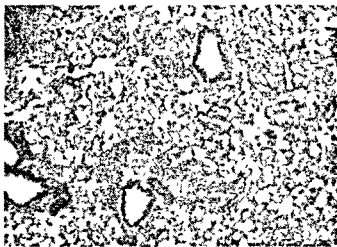
EPL

TG.AC, Liver: Myelodysplasia



EPL

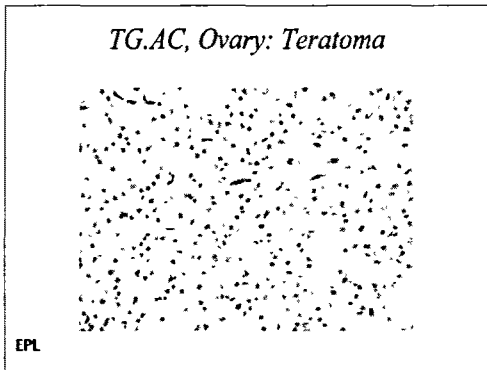
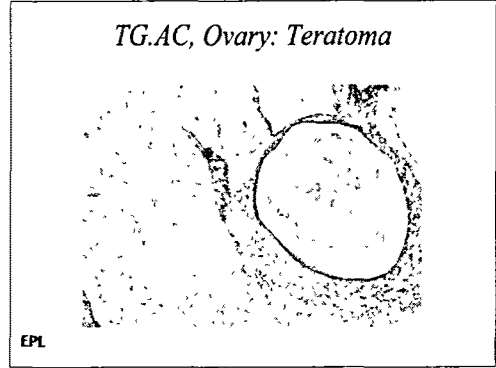
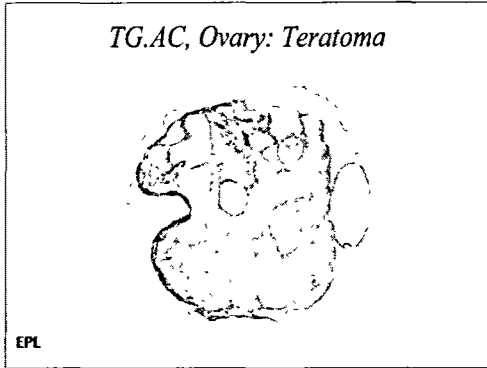
TG.AC, Lung: Myelodysplasia



EPL

Tumors in Tg.AC Transgenic Mice

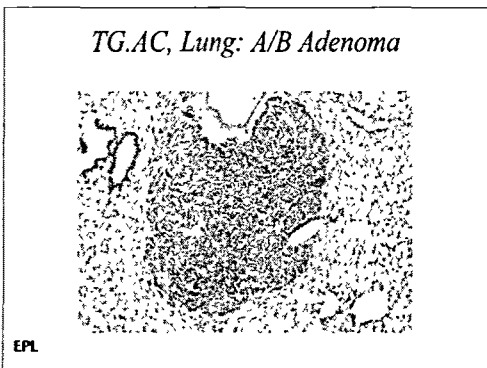
• TERATOMA



Tumors in Tg.AC Transgenic Mice

- ALVEOLAR/BRONCHIOLAR ADENOMA

EPL

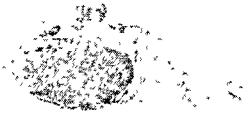


Tumors in Tg.AC Transgenic Mice

- ALVEOLAR/BRONCHIOLAR CARCINOMA

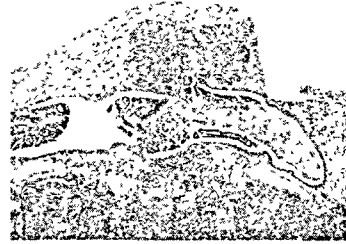
EPL

TG.AC, Lung: A/B Carcinoma



EPL

TG.AC, Lung: A/B Carcinoma



EPL

Tumors in Tg.AC Transgenic Mice

- MAST CELL TUMOR, SKIN

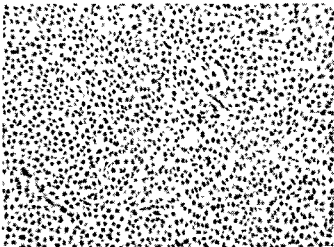
EPL

TG.AC, Skin: Mast Cell Tumor



EPL

TG.AC, Skin: Mast Cell Tumor



EPL



EPL

rasH2 Transgenic Mouse

- Has normal coding region of human c-Ha-ras gene, Mutation in last intron
- Over-expression of gene in tumors and normal tissues
- CB6F1
- Few lesions at 6 months of age

EPL

rasH2 Transgenic Mouse - Advantages

- Carries a human oncogene
- More rapid onset of tumors
- Higher incidence of tumors
- Target tissues correspond to bioassays

EPL

Tumors in rasH2 Transgenic Mice Spontaneous Tumors

- Fore stomach
 - Papilloma
 - Squamous Cell Carcinoma
- Lung
 - A/B Adenoma
 - A/B Carcinoma
- Hematopoietic System
 - Thymus, Lymphoma
 - Spleen, Hemangiosarcoma
- Uterus,
 - Hemangiosarcoma
- Integumentary System
 - Skin, Papilloma
 - Subcutis
 - Hemangiosarcoma
 - Rhabdomyosarcoma

EPL

Tumors in rasH2 Transgenic Mice Induced Tumors

- Lung Tumors
- Fore stomach Epithelial Tumors
- Skin Epithelial Tumors
- Splenic Hemangiosarcomas
- Leukemias
- Urinary Bladder Tumors

EPL

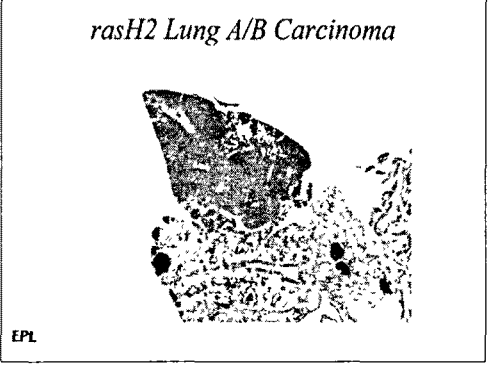
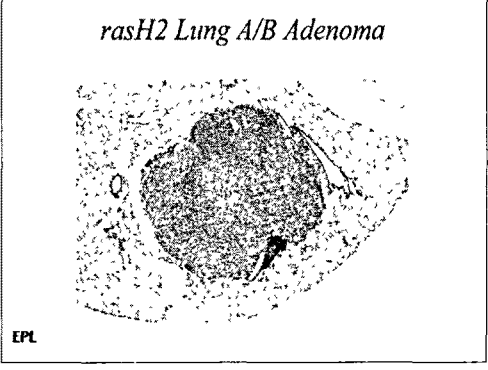
Tumors in rasH2 Transgenic Mice Spontaneous Tumor Incidence

	Males	Females
Fore stomach Papilloma	3%	1%
Lung - A/B Adenoma	7%	5%
Spleen - Hemangiosarcoma	4%	8%

EPL

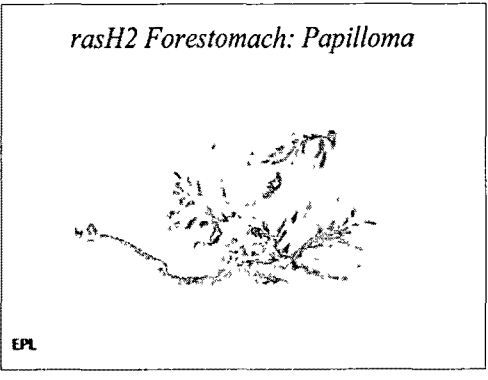
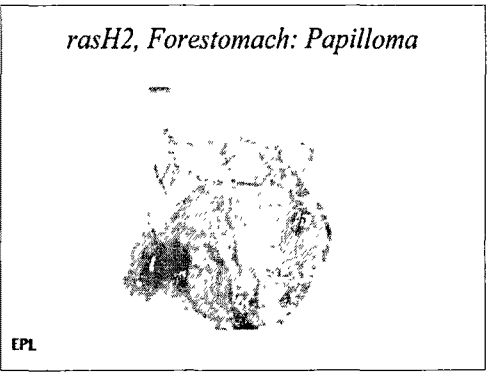
Tumors in rasH2 Transgenic Mice

- LUNG TUMORS



Tumors in rasH2 Transgenic Mice

• FORESTOMACH PAPILOMA

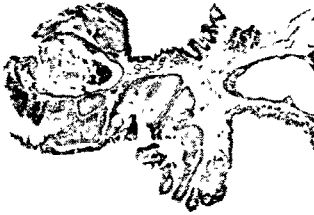


Tumors in rasH2 Transgenic Mice

• VULVAR PAPILOMA

EPL

rasH2 Vulva: Papilloma



EPL

Tumors in rasH2 Transgenic Mice

• SPLENIC HEMANGIOSARCOMA

rasH2 Splenic Hemangiosarcoma

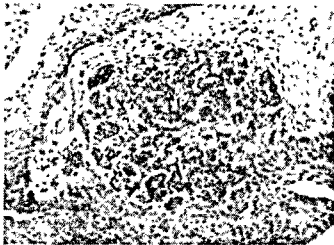


EPL

Tumors in rasH2 Transgenic Mice

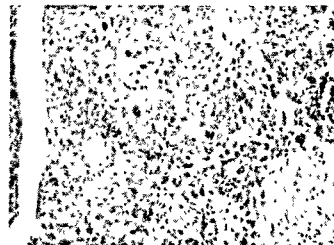
• URINARY BLADDER TUMORS

Transitional Cell Carcinoma



EPL

Transitional Cell Carcinoma



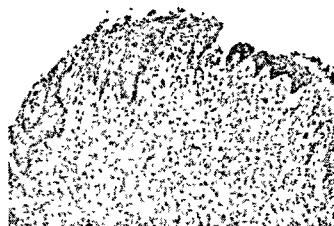
EPL

Tumors in rasH2 Transgenic Mice

- SUBMUCOSAL MESENCHYMAL PROLIFERATIVE LESION OF THE URINARY BLADDER OF AGED MICE

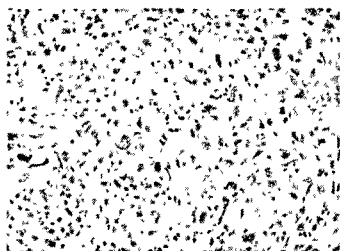
EPL

SUBMUCOSAL MESENCHYMAL PROLIFERATIVE LESION OF THE URINARY BLADDER OF AGED MICE



EPL

SUBMUCOSAL MESENCHYMAL PROLIFERATIVE LESION OF THE URINARY BLADDER OF AGED MICE



EPL



EPL

p53 +/- Knockout Mouse

- C57Bl/6
- Single wild-type p53 allele
- Inactivation of single allele results in normal phenotype
- Low sporadic tumor incidence up to one year

EPL

Tumors in p53 +/- Knockout Mice
Spontaneous Tumors

- Skin/subcutis Sarcoma
- Malignant Lymphoma
- Osteosarcoma
- Granulocytic Leukemia
- Meningeal Sarcoma
- Lung Adenoma
- Urinary Bladder Tumors

EPL

*Tumors in p53+/- Knockout Mice
Induced Tumors*

- Soft Tissues - Sarcoma
- Systemic - Malignant Lymphoma

EPL

*Tumors in p53+/- Knockout Mice
Spontaneous Tumor Incidence*

	Males	Females
Skin/Subcutis Sarcoma	2%	4%
Malignant Lymphoma	2%	2%
Osteosarcoma	2%	-
Lung - A/B Adenoma	-	1%

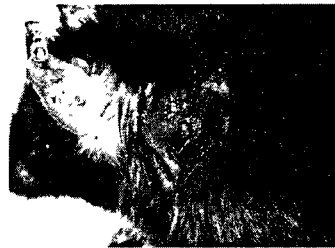
EPL

Tumors in p53+/- Knockout Mice

- SUBCUTANEOUS SARCOMA COMPLEX

EPL

p53+/-, Subcutis: Sarcoma



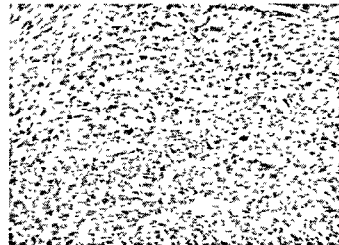
EPL

p53+/-, Subcutis: Sarcoma



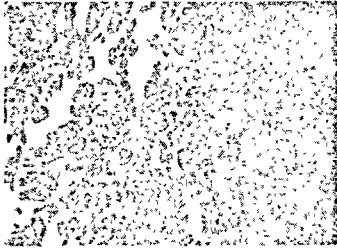
EPL

p53+/-, Subcutis: Sarcoma



EPL

p53+/-, Subcutis: Sarcoma



EPL

Tumors in p53+/- Knockout Mice

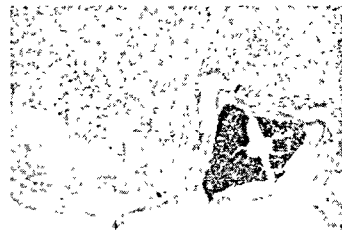
• OSTEOSARCOMA

p53+/-, Sternum: Osteosarcoma



EPL

p53+/-, Vertebral Column: Osteosarcoma



EPL

Tumors in p53+/- Knockout Mice

• MALIGNANT LYMPHOMA

p53+/-, Thymus: Malignant Lymphoma



EPL

Pp53+/-, Liver: Malignant Lymphoma



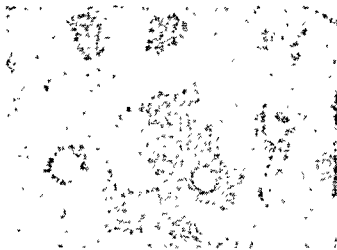
EPL

p53+/-, Liver, Spleen: Malignant Lymphoma



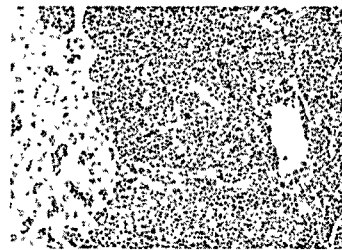
EPL

p53+/-, Liver: Malignant Lymphoma



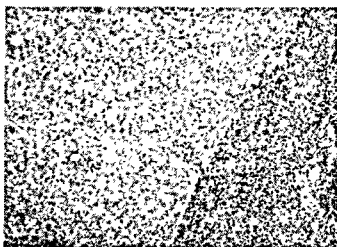
EPL

p53+/-, Liver: Malignant Lymphoma



EPL

P53+/-, Thymus: Malignant Lymphoma

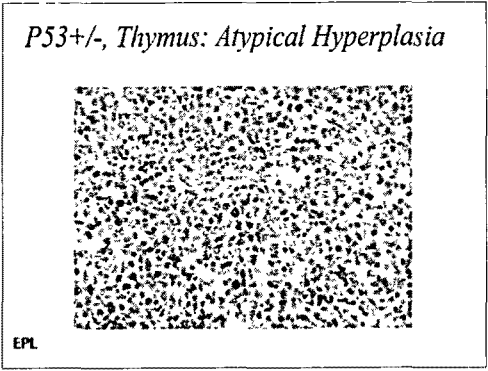
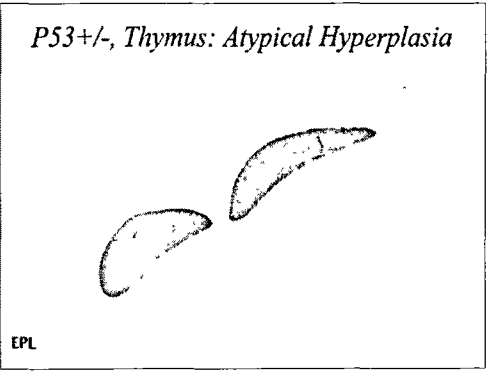
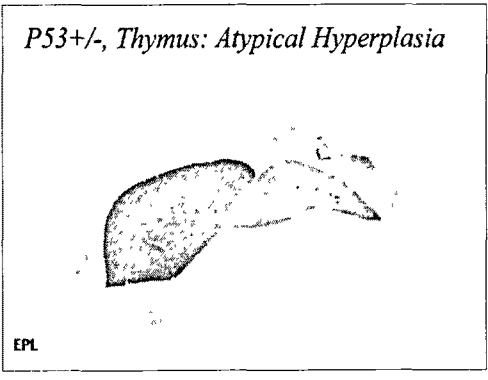
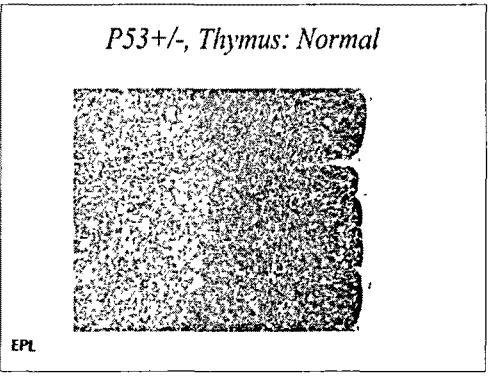
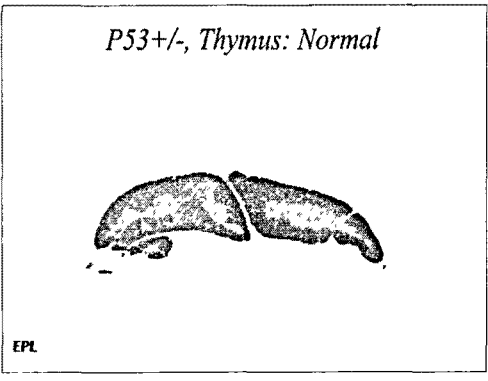


EPL

Tumors in p53+/- Knockout Mice

• ATYPICAL HYPERPLASIA OF THE THYMUS

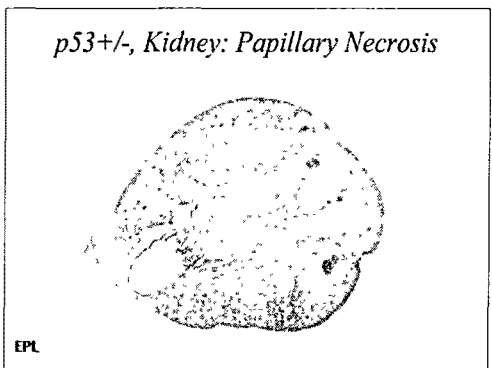
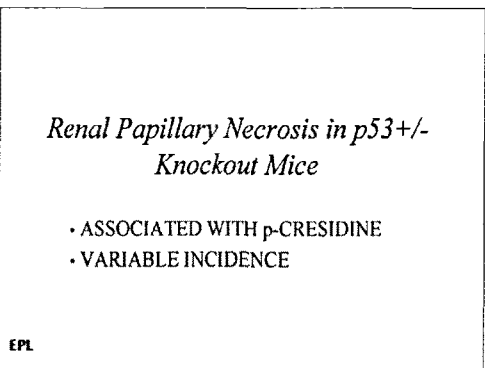
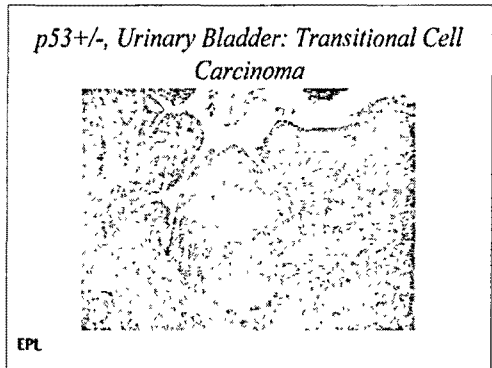
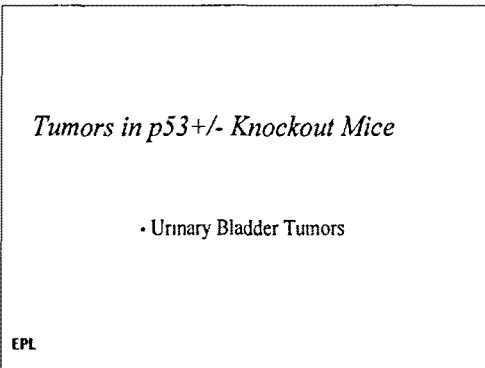
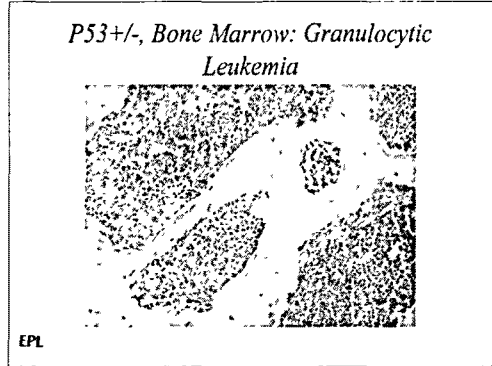
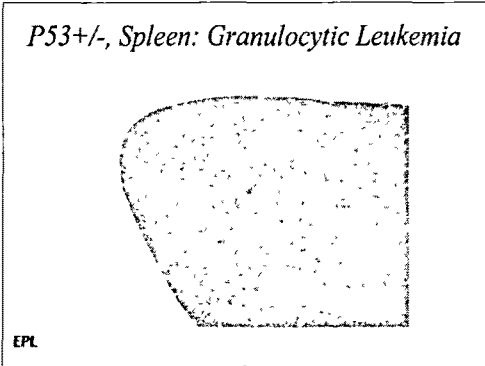
EPL



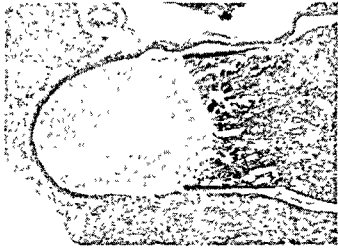
Tumors in p53+/- Knockout Mice

- GRANULOCYTIC LEUKEMIA

EPL



p53+/-, Kidney: Papillary Necrosis



EPL

Mouse Genital Urinary Syndrome

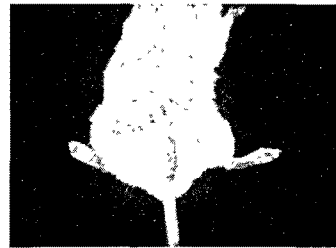
- Etiology Unknown
- Reported in transgenic and nontransgenic strains
- Tg AC
- p53 +/-

EPL

Mouse Genital Urinary Syndrome

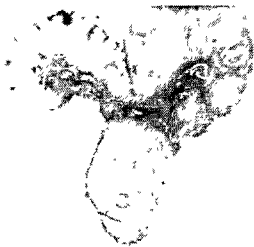
EPL

MUGS



EPL

MUGS



EPL

MUGS



EPL



EPL

Transgenic Mice at the Regulatory Agencies

EPL

FDA

- Congressional Mandate
 - Faster Review
 - Less Regulatory Burden
- ICH Guidance
 - Approved in vivo alternative to 2nd rodent study

EPL

FDA

- Transgenic Model may be chosen as:
 - Alternative to a 2nd 2 year rodent study
 - Complimentary or confirmatory for equivocal findings
 - To set priorities
 - As an option to repeating a 2 year study
 - Inadequate 2 year study
 - Change in clinical indication or human exposure
 - To support differing completion of a 2 year study
 - To assess carcinogenic potential of contaminants

EPL

EPA

- Different Levels of information needed
- Many pollutants to consider
- Emphasis on mechanistic data in new laws
- Alternatives considered
 - Transgenics
 - Medaka
 - Neonatal Mouse Model

EPL

EPA

- Does EPA accept the use of alternatives now?
 - Yes - As part of weight of evidence
 - Yes - To help understand mode of action
 - No - In lieu of tumor findings in a 2 year Bioassay for HFRA or TOSCA

EPL

Japan

- Pharmaceuticals - either 2 rodent carcinogenicity studies or 1 rodent and 1 short term alternative test
 - Alternatives
 - Transgenic Model
 - Initiation-Promotion
 - Neonatal Mouse
- Pesticides - 2 rodent carcinogenicity tests

EPL

Issues

- What type of carcinogens do we wish to identify? or What type of carcinogens is it OK not to identify
- What is the gold standard?
- How will the results be used?
- What is the likely outcome of contemporary validation trials using genetically altered mice?
- What opportunities are afforded by the efforts?

EPL

What type of carcinogens do we wish to identify? or What type of carcinogens is it OK not to identify?

- Trans-species, multi-site genotoxic carcinogens
- Six-month carcinogens
- High-dose carcinogens
- Tissue-specific carcinogens
- Carcinogens that are mechanistically relevant to humans

EPL

What is the gold standard?

- Conventional two-year rodent bioassay
- Human carcinogens
- Organotrophism

EPL

How Will Results Be Used?

- As substitute for conventional 2-year bioassay
- As adjunct in weight of evidence
- To define dose response
- To screen chemicals prior to conventional testing
- To help define mechanisms

EPL

What is the likely outcome of contemporary validation trials using genetically altered mice?

- Déjà vu

EPL

*What opportunities are afforded
by the efforts?*

- A chance for progress in improving how potential human carcinogens are identified
- Stage set for not being limited to 4 cell conventional testing
- Strengthen the scientific base for risk assessment

EPL