

모바일 악성 코드 사례와 예측

Ah 안철수연구소

전략제품개발팀 / 박준식
jspark@ahnlab.com

Summary

1. Introduction

- 1.1 Mobile Terminal Functionalities
- 1.2 Wireless Internet in CDMA
- 1.3 Mobile in Business
- 1.4 Mobile Trends

2. Mobile Malicious Code

- 2.1 Palm OS
- 2.2 Symbian OS
- 2.3 Windows Mobile

3. Symptom & Prediction

- 3.1 Vulnerabilities
- 3.2 Symptom
- 3.3 Prediction

4. Conclusion

Summary

1. Introduction

- 1.1 Mobile Terminal Functionalities
- 1.2 Wireless Internet in CDMA
- 1.3 Mobile in Business
- 1.4 Mobile Trends

2. Mobile Malicious Code

- 2.1 Palm OS
- 2.2 Symbian OS
- 2.3 Windows Mobile

3. Symptom & Prediction

- 3.1 Vulnerabilities
- 3.2 Symptom
- 3.3 Prediction

4. Conclusion

1. Introduction

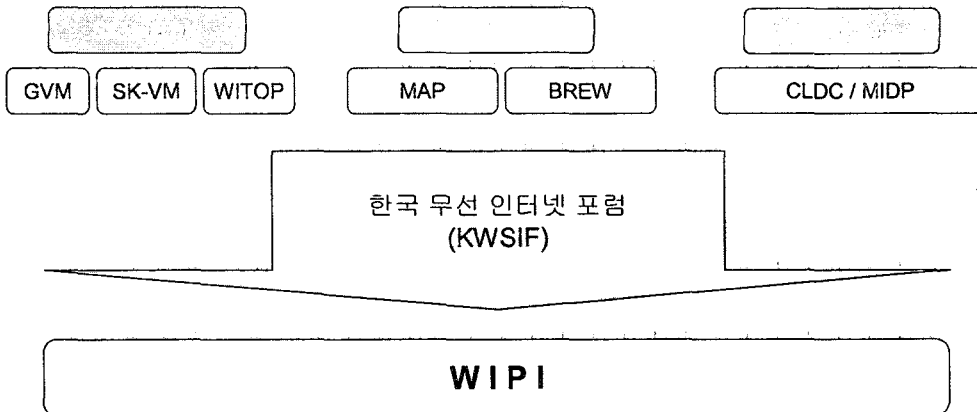
Mobile Terminal Functionalities

- ☐ Telephone
- ☐ Digital Camera
- ☐ MP3 / Movie Player
- ☐ PIM Data
 - ☐ Contacts
 - ☐ Calendar
- ☐ WAP Browsing / Web Browsing
- ☐ File Exchange
- ☐ More ...

1. Introduction

Wireless Internet in CDMA

Wireless Mobile Platform in Korea



5

안철수연구소

1. Introduction

Wireless Internet in CDMA

URL Connection

Opening Gateway

- Independent Mobile Service
- Dependent Billing System

Opening IWF

- MISP (Mobile ISP)
- Independent Billing System

6

안철수연구소

1.Intoduction

Mobile in Business

SFA (Sales Force Automation)

Stock Exchange

Mobile Banking

Mobile Office

Distribution Support

Customer Support

School Affair Management

More...

7

Atn 안철수연구소

1.Intoduction

Mobile Trends

Home Networking

Hot Spot

Mobile IP Phone

WLAN Phone

WIBRO (Wireless Broadband Internet)

8

Atn 안철수연구소

Summary	1. Introduction
	1.1 Mobile Terminal Functionalities
	1.2 Wireless Internet in CDMA
	1.3 Mobile in Business
	1.4 What is a WIBRO ?
	2. Mobile Malicious Code
	2.1 Palm OS
	2.2 Symbian OS
	2.3 Windows Mobile
	3. Symptom & Prediction
	3.1 Vulnerabilities
	3.2 Symptom
	3.3 Prediction
	4. Conclusion

2. Mobile Malicious Code

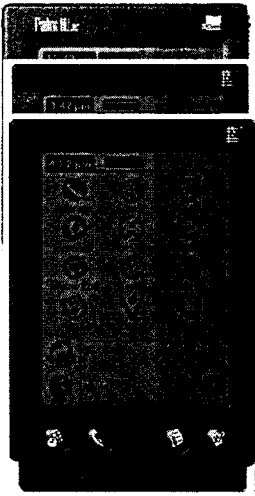
Palm OS

History

Vapor

Phage

Liberty

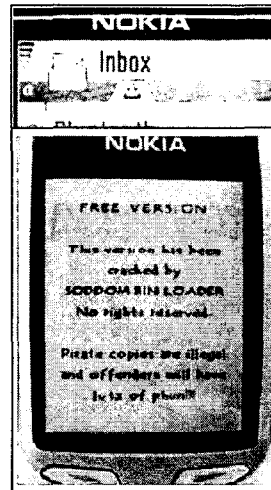


2.Mobile Malicious Code Symbian OS

History

Cabir.worm

Mosquit



11

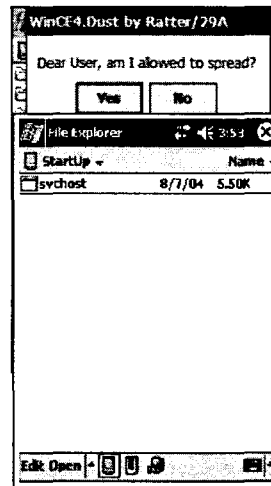
안철수연구소

2.Mobile Malicious Code Windows Mobile

History

Wince.Duts

Wince.Brador.A



12

안철수연구소

Summary

1. Introduction

- 1.1 Mobile Terminal Functionalities
- 1.2 Wireless Internet in CDMA
- 1.3 Mobile in Business
- 1.4 What is a WIBRO ?

2. Mobile Malicious Code

- 2.1 Palm OS
- 2.2 Symbian OS
- 2.3 Windows Mobile

3. Symptom & Prediction

- 3.1 Vulnerabilities
- 3.2 Symptom
- 3.3 Prediction

4. Conclusion

3. Threats & Prediction Vulnerabilities

Unknown Bluetooth Connection
SMS DOS (Denied Of Service)
Unwanted Vcards
T720 DOS

3.Threats & Prediction

Symptom

illegal Mobile Content Download

Hacking MP3 Files

WIPI Open Source Code

Virus Writer Groups

Hacking WIFI

3.Threats & Prediction

Prediction

Attacking EFS

MalContent

Reboot the Cellular Phone

Hacking Private Information

Unwanted Bill

Mobile Adwares

Summary

1. Introduction

- 1.1 Mobile Terminal Functionalities
- 1.2 Wireless Internet in CDMA
- 1.3 Mobile in Business
- 1.4 What is a WIBRO ?

2. Mobile Malicious Code

- 2.1 Palm OS
- 2.2 Symbian OS
- 2.3 Windows Mobile

3. Symptom & Prediction

- 3.1 Vulnerabilities
- 3.2 Symptom
- 3.3 Prediction

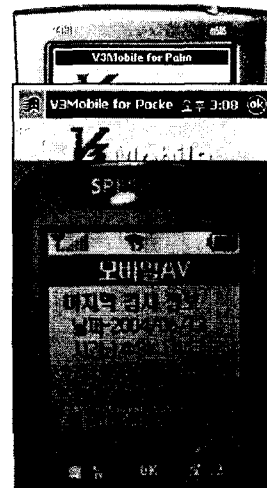
4. Conclusion

17

Ahn 안철수연구소

4. Conclusion

When ?
How to Prevent
AhnLab makes a Key.



18

Ahn 안철수연구소

Thanks

Q & A