

Subjective Evaluation of Seal Robot at the Japan Cultural Institute in Rome

Takanori Shibata^{1,2}, Kazuyoshi Wada^{1,3}, and Kazuo Tanie^{1,3}

- 1 National Institute of Advanced Industrial Science and Technology
1-1-1 Umezono, Tsukuba 305-8568, Japan
(Tel. +81-29-861-7299, E-mail: {shibata-takanori, k-wada, tanie.k}@aist.go.jp)
- 2 PERESTO, JST
- 3 Institute of Engineering Mechanics, University of Tsukuba

Abstract: This paper describes research on mental commit robot that seeks a different direction from industrial robot, and that is not so rigidly dependent on objective measures such as accuracy and speed. The main goal of this research is to explore a new area in robotics, with an emphasis on human-robot interaction. Mental commit robots provide psychological, physiological, and social effects to human beings through physical interaction. In the previous research, we categorized robots into four categories in terms of appearance. Then, we introduced a cat robot and a seal robot, and evaluated them by interviewing many people. The results showed that physical interaction improved subjective evaluation. Moreover, a priori knowledge of a subject has much influence into subjective interpretation and evaluation of mental commit robot. In this paper, 95 subjects evaluated the seal robot, Paro by questionnaires in an exhibition at the Japan cultural institute in Rome, Italy for 4 days from June 25th to 28th, 2003. This paper reports the results of statistical analysis of evaluation data.

Keywords: human robot interaction, subjective evaluation, mental commit robot, seal robot, statistical analysis

1. Introduction

Robots that coexist symbiotically with people are machines to affect human hearts and lay stress on people's subjective evaluation, although they sometimes do physical work [1]. Such robots should be designed as open systems considering unknown environment and the minds of users, not as closed systems and predetermined environments as with industrial robots. Because these are complicated requiring consideration to people and sensitivity, they cannot be designed by conventional scientific and technological concepts alone [2, 3]

We studied and developed artificial emotional creatures as the examples of robots that coexist with people [1, 3-9]. The artificial emotional creatures exist as subsidiaries in everyday life similar to pets, hold equal relationships with people, move by orders from people and act autonomously, and contact with people [10, 11], giving people pleasure and relaxation. They prevent mental illness by enriching and healing the humans' heart, give pleasure to daily leisure, and commit themselves to the humans' mental part. They are referred to as "mental commit robots".

Seal type mental commit robot was applied to therapy of children at pediatric hospital and assisting activity of elderly people at elderly institutions [12-17]. The results showed that there were psychological merit, physiological merit, and social merit by interaction with the seal robot.

A study was conducted by questionnaires in "Exhibition of Dream Technology" held for about 3 weeks from July to August 2000, on how people subjectively evaluate robots in human interaction, a characteristic of mental commit robots [18]. Seal robots were used for

evaluation. Respondents were exhibition visitors, and after demonstrators explained the purpose and functions of the robot, they were requested to interact with the robot. Multiple questions about the robot were asked by questionnaires. The tabulation results of subjective evaluation provided high evaluation on the whole. In addition, important factors to be key points in robot evaluation were extracted from the results of principal component analysis, thus confirming relationship between them and factors such as shape and the feel emphasized in design. Respondents were grouped to find differences in evaluation among groups. These results revealed that the evaluation factors of "favorable impression by contacting" and "favorable impression by appearance" are important as those pertaining to evaluation in the design and production of mental commit robots to be highly appreciated in subjective evaluation.

Another study was conducted by questionnaires in "Japan: Gateway to the Future, Digital Technology Exhibition" held for about 7 weeks from February to March 2002 at the Science Museum in London, U.K., on how people subjectively evaluate robots in human interaction, a characteristic of mental commit robots. The way of study was the same as the previous one. The tabulation results of subjective evaluation provided high evaluation on the whole, and were very similar in those of Japan [19].

This time, we obtained an opportunity to exhibit the seal robots at the Japan cultural institute in Rome, Italy for 4 days from June 25th to 28th, 2003. The same study was conducted by questionnaires in the institute for 4 days. This paper reports results of statistical analysis of evaluation data.



Fig. 1 Seal Robot: Paro



Fig. 2 Demonstration at the Japan cultural institute in Rome, Italy

The developmental purpose and process of the mental commit robot are stated in Chapter 2. The method of subjective evaluation is explained in Chapter 3, statistical analysis results of evaluation data are discussed in Chapter 4, and they are summarized in Chapter 5.

2. Seal Robot: Paro

2.1. Mental Commit Robot

Mental commit robots are intended to offer people not physical work or service but mental effects such as pleasure and relaxation as personal robots. Robots act independently with purposes and motives while receiving stimulation from the environment as with living organisms. Actions manifested by interaction with people are interpreted by people as if robots have hearts and feelings.

2.2. Previous Process

A basic psychological experiment was conducted on the subjective interpretation and evaluation of robot behavior by people in the interaction between robots and people. This showed the importance of appropriately stimulating human senses and extracting associations. Sensor systems such as visual, hearing, and tactile senses for robots were studied and developed. In the tactile sense, a plane tactile sensor using an air bag was developed to cover the robot

for bodily contact between people and robots. This can detect position and power when people contact the robot, and at the same time, it allows people to feel softness. Dog, cat, and seal robots were developed using sensors.

In the subjective evaluation of mental commit robots in this paper, a mental commit seal robot "Paro" version 7 was used.

2.3. Seal Robot "Paro"

The robot and major functions are shown in Fig.1. The appearance was designed with a harp seal baby as a model, and the surface is covered with pure white fur. A newly developed plane tactile sensor is inserted between the hard inside skeleton and fur to express the soft natural feel and to permit the measurement of human contact with the robot. The robot has the 4 senses of sight (light sensor), audition (determination of sound source direction and speech recognition), and equilibrium in addition to the above-stated tactile sense. Mobile parts are as follows: vertical and horizontal neck movements; front and rear paddle movements; and each eyelid movement important as facial expression. The robot acts by using the 3 elements of the internal states of the robot, sense information from sensors, and daily rhythm (morning, daytime, and night) to manifest activities through interaction with people.

3. Purposes and Method of Subjective Evaluation

3.1. Purpose of Subjective Evaluation

In the previous studies, subjective evaluation was done with cat robots for 88 respondents and seal robots for 785 respondents in Japan, and 440 respondents in U.K. The objectives of this paper were that questionnaires from a lot of persons in Rome, Italy, were conducted on a large scale to collect subjective evaluation data about interaction with robots and analyze them statistically, thus analyzing and classifying the tendency of robot evaluation and elements as evaluation points. It was also intended to collect requests, opinions, and impressions to the development of mental commit robots that are used for future R&D.

3.2 Method of Subjective Evaluation

In Robotics exhibition hold at the Japan cultural institute in Rome, Italy for 4 days from June 25th to 28th, 2003, seal robots Paro are displayed. Demonstration is to be done through the whole period, so one Paro was prepared before experiments.

On the stage, demonstrators conducted one to three demonstrations a day. After the developmental process and purpose and the functions of mental commit robots etc. were explained for about 10 minutes, Paro was placed on the stage to allow the audience who visited the stage to touch the robot freely. A questionnaire was given to visitors who after interaction, and accepted this filled out the form. Total 95 questionnaires were obtained during the 4 days.

Table 1 Question about Subjects

Personal questionnaire
1. Sex ?
2. Age ?
3. Occupation ?
4. Do you like animals?
5. Are you owning any pets or do you want to own pets?
6. Why do you not have any pets?
7. Do you know about real baby seals?
8. How much free time do you have in daily life?

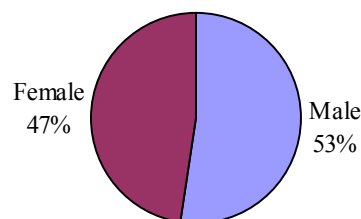
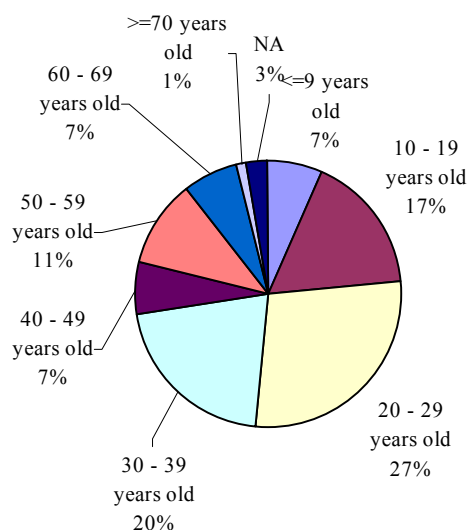


Table 2 Question about Subjective Evaluation of Paro

Evaluation questionnaire
1. Cute
2. Want to pet it
3. Want to talk to it
4. Has vitality
5. Easy to get friendly with
6. Has real expressions
7. Natural
8. Feels good to the touch
9. Fun to play with
10. Relaxing
11. Like
12. Needed in this world
13. Want it for myself

(a) Distribution by Gender



(b) Distribution by Age

Fig. 3 Proportion of Gender and Age of Respondents

3.2.1. Questionnaire

The contents of the questionnaire are written in Italian, and classified largely into questions about the respondent (Table 1); and questions of 5-grade evaluation for subjective evaluation (Table 2). The answer time was different from person to person, but 5-10 minutes were necessary. Many children were included, so parents were requested to help them in answering questionnaires.

3.2.2. Condition of Demonstration (Interaction)

Paro was placed on the stage to allow visitors to the stage to interact freely with it. The front of the stage was sometimes quite crowded and yet every cycle of demonstration took about 30 minutes to permit as many people as possible to experience interaction by turn.

Interaction mainly involved the actions of contacting and stroking, and women hugged it in some cases. In other cases, visitors called its name, or brought their faces close to it.

4. Results and Discussion

4.1. Answer Results of Questionnaires

Fig.3 (a) and (b) show the proportion of gender and age of 76 respondents who filled out complete answers to 13 questions. Fig.4 gives the values of average and standard deviation of answers to the 13 questions of subjective evaluation at the Japan cultural institute in Rome, Italy. The results of subjective evaluation in Italy indicate that

favorable answers were obtained for the most part, and the variables of “Cute,” “Want to pet it,” “Relaxing,” and “Like” are highly evaluated.

4.2. Principal Component Analysis of Subjective Evaluation

Multivariate analysis was conducted to evaluate the answers of subjective evaluation comprehensively. In analysis, there is no external criterion and the contents of all 13 questions are explanatory variables for Paro evaluation; the multivariate analysis techniques of such variables include principal component analysis, factor analysis, and latent structure analysis.

Principal component analysis was used to do comprehensive evaluation by 13 explanatory variables, and because cumulative contribution becomes higher than the case of extracting the same number of factors by factor analysis. This analysis was conducted with 76 sheets consisting of complete answers to 13 questions.

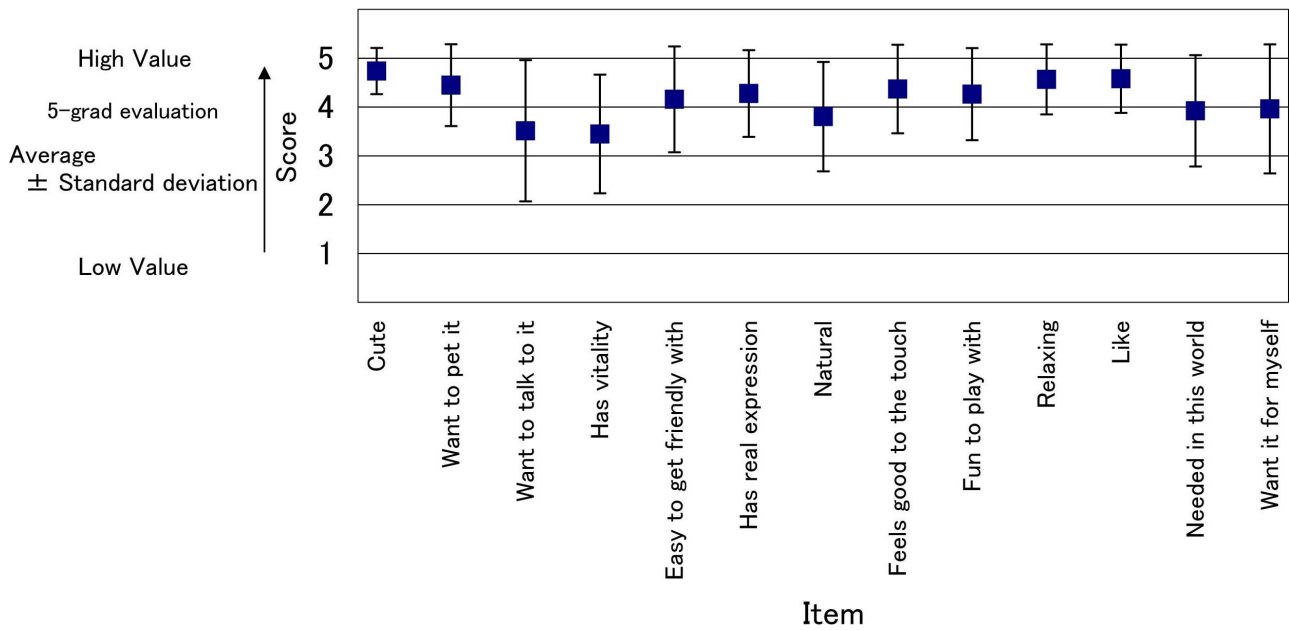


Fig. 4 Average and Standard Deviation of Answers to 13 Questions about Subjective Evaluation in Rome, Italy (76 sheets)

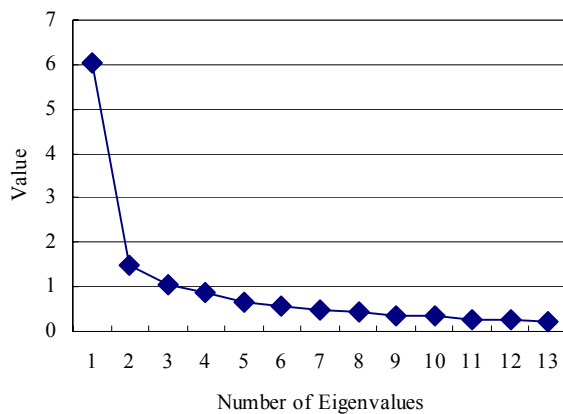


Fig. 5 Eigenvalues in Principal Component Analysis

4.3. Results and Discussion of Principal Component Analysis

The principal component analysis was done with 76 sheets of complete answers to 13 questions of subjective evaluation to extract three factors with eigen-value of 1 or higher (Fig.5). Kaiser normalization was done to enhance factor interpretation, and then three factors characterized by factor loading shown in Table 3 was obtained.

4.3.1. Interpretation of Factors

The first factor is characterized by the variables of “Cute,” “Feels good to the touch,” “Fun to play with” and “Relaxing,” and it can be interpreted as a factor of “favorable impression by contacting and appearance.” The second factor is characterized by “Needed in this world”

Table 3 Three Factors Characterized Factor Loading

Variable	Three Factors		
	Factor 1	Factor 2	Factor 3
Cute	0.742	-0.024	0.351
Want to pet it	0.586	0.494	0.014
Want to talk to it	0.484	0.696	0.090
Has vitality	0.309	0.516	0.457
Easy to get friendly with	0.172	0.207	0.754
Has real expressions	0.282	-0.022	0.747
Natural	0.399	0.287	0.688
Feels good to the touch	0.642	0.189	0.268
Fun to play with	0.752	0.313	0.182
Relaxing	0.666	0.087	0.435
Like	0.573	0.450	0.250
Needed in this world	-0.098	0.767	0.421
Want it for myself	0.214	0.855	0.000
%Total variance	25.359	46.775	65.805

and “Want it for myself,” and it can be interpreted as a factor of “necessity of Paro.” The third factor is characterized by “Easy to get friendly with,” “Has real expressions” and “Natural,” and it can be interpreted as a factor of “impression like real animals.”

4.3.2. Comparison of Factor Scores

In the next step, when the factor scores of the factor of “favorable impression by contacting and appearance,” the factor of “necessity of Paro” and the factor of “impression like real animals” were calculated to obtain the results of actual evaluation, the distribution of factor score for the whole respondents (76) became as in Fig.6 (a), (b) and (c).

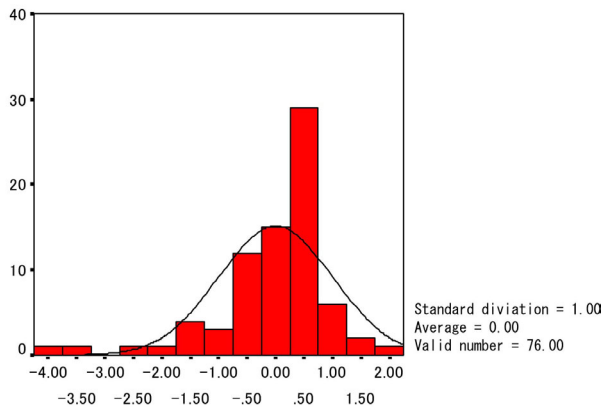


Fig. 6 (a) Factor Score Distribution of factor of “Favorable impression by contacting and appearance”

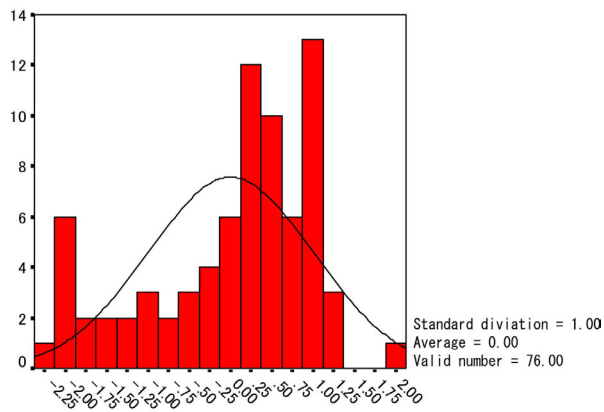


Fig. 6 (b) Factor Score Distribution of factor of “Necessity of Paro”

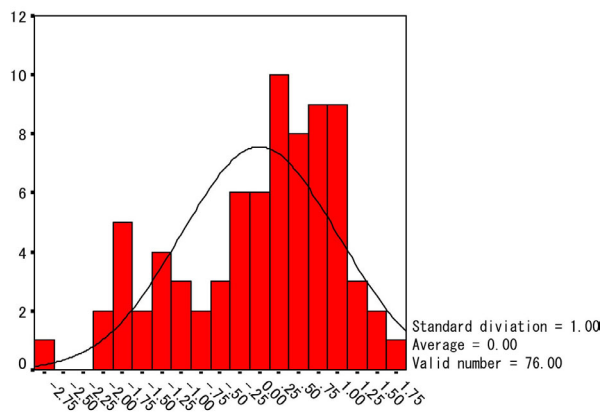
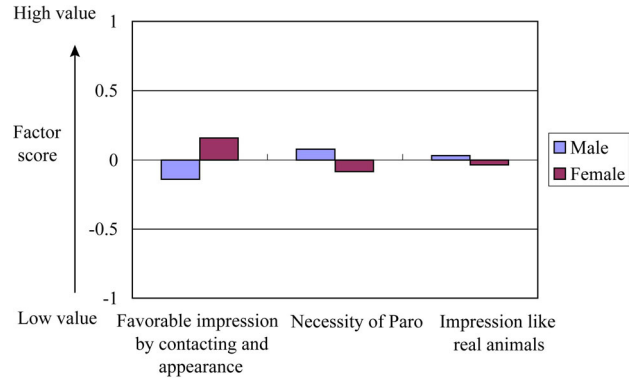
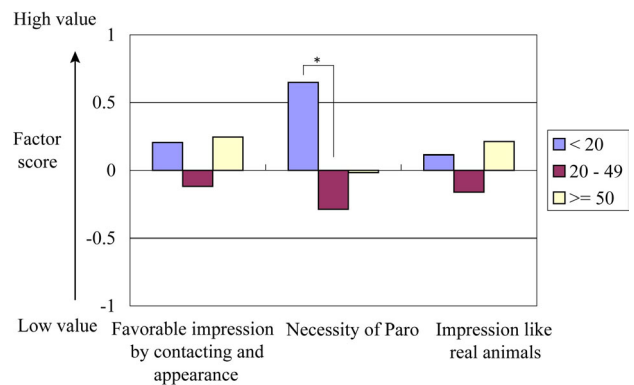


Fig. 6 (c) Factor Score Distribution of factor of “Impression like real animals”

To analyze factor scores in detail, respondents were grouped and average factor scores were compared between groups. Grouping was done with gender and age, and the factor score of each group was subjected to Wilcoxon's test, a nonparametric test as a test for mean



(a) Comparison by Gender



(b) Comparison by Age

Fig. 7 Proportion of Number of Each Group Member and Comparison of Factor Scores Average

difference, because the normality or equal variance of each group cannot be expected. The comparison of factor score averages between proportions of respondent number of each group is shown in Fig.7.

In grouping by gender, no significant differences were seen in the scores for the three factors. In grouping by age, the second factor of “Necessity of Paro” was significant, and the group of less than 20 years old evaluated it highly. As for other factors, such as “Favorable impression by contacting and appearance” and “Impression like real animals,” the group of less than 20 and over 50 years old tended to evaluate them highly.

5. Conclusion

A seal robot, “Paro,” was introduced to a lot of visitors in robot exhibition at the Japan cultural institute in Rome, Italy, and interaction with Paro was done to ask questionnaires about the subjective evaluation of Paro.

The tabulation results of subjective evaluation provided high evaluation on the whole. In addition, important factors to be key points in robot evaluation were extracted from the results of principal component analysis. Then, respondents were grouped to find differences in evaluation among groups. These results revealed that the evaluation factors of “favorable impression by contacting

and appearance,” “necessity of Paro” and “impression like real animals” are important as pertaining to evaluation in the design and production of mental commit robots to be highly appreciated in subjective evaluation in Italy.

We conducted the same studies in Japan (785 respondents) and UK (440 respondents). Comparison between the results in Italy and those in the countries will be reported in the future.

These results as requests and impressions obtained in questionnaires will be used for the improvement of Paro.

References:

- [1] T. Shibata, et al., Emotional Robot for Intelligent System - Artificial Emotional Creature Project, Proc. of 5th IEEE Int'l Workshop on ROMAN, pp.466-471, 1996
- [2] H. Petroski, Invention by Design, Harvard University Press, 1996.
- [3] T. Shibata and R. Irie, Artificial Emotional Creature for Human-Robot Interaction - A New Direction for Intelligent System, Proc. of the IEEE/ASME Int'l Conf. on AIM'97, paper number 47 and 6 pages in CD-ROM Proc., 1997
- [4] T. Shibata, et al., Artificial Emotional Creature for Human-Machine Interaction, Proc. of the IEEE Int'l Conf. on SMC, pp.2269-2274, 1997
- [5] T. Tashima, S. Saito, M. Osumi, T. Kudo and T. Shibata, Interactive Pet Robot with Emotion Model, Proc. of the 16th Annual Conf. of the RSJ, Vol. 1, pp.11-12, 1998
- [6] T. Shibata, T. Tashima, and K. Tanie, Emergence of Emotional Behavior through Physical Interaction between Human and Robot, Procs. of the 1999 IEEE Int'l Conf. on Robotics and Automation, 1999
- [7] T. Shibata, T. Tashima, K. Tanie, Subjective Interpretation of Emotional Behavior through Physical Interaction between Human and Robot, Procs. of Systems, Man, and Cybernetics, pp.1024-1029, 1999
- [8] T. Shibata, K. Tanie, Influence of A-Priori Knowledge in Subjective Interpretation and Evaluation by Short-Term Interaction with Mental Commit Robot, Proc. of the IEEE Int'l Conf. on Intelligent Robot and Systems, 2000
- [9] T. Shibata, et al., Mental Commit Robot and its Application to Therapy of Children, Proc. of the IEEE/ASME Int'l Conf. on AIM'01, paper number 182 and 6 pages in CD-ROM Proc., 2001
- [10] M. M. Baum, N. Bergstrom, N. F. Langston, L. Thoma, Physiological Effects of Human/Companion Animal Bonding, Nursing Research, Vol. 33. No. 3, pp.126-129, 1984
- [11] J. Gammonley, J. Yates, Pet Projects Animal Assisted Therapy in Nursing Homes, Journal of Gerontological Nursing, Vol.17, No.1, pp.12-15, 1991
- [12] T. Shibata, et al., Mental Commit Robot and its Application to Therapy of Children, Proc. of the IEEE/ASME Int'l Conf. on AIM'01 paper number 182 and 6 pages in CD-ROM Proc., 2001
- [13] T. Shibata, K. Wada, T. Saito, K. Tanie, Robot Assisted Activity for Senior People at Day Service Center, Proc. of Int'l Conf. on Information Technology in Mechatronics, pp.71-76, 2001
- [14] K. Wada, T. Shibata, T. Saito, K. Tanie, Robot Assisted Activity for Elderly People and Nurses at a Day Service Center, Proc. of the IEEE Int'l Conf. on Robotics and Automation, 2002
- [15] T. Saito, T. Shibata, K. Wada, K. Tanie, Examination of Change of Stress Reaction by Urinary Tests of Elderly before and after Introduction of Mental Commit Robot to an Elderly Institution, Proc. of AROB, 2002
- [16] K. Wada, T. Shibata, T. Saito, K. Tanie, Psychological and Social Effects to Elderly People by Robot Assisted Activity at a Health Services Facility for the Aged, Proc. of Joint 1st International Conference on Soft Computing and Intelligent Systems and 3rd International Symposium on Advanced Intelligent Systems, paper number 23Q1-3, in CD-ROM Proc., 2002
- [17] T. Saito, T. Shibata, K. Wada, K. Tanie, Change of Stress Reaction by Introduction of Mental Commit Robot to a Health Services Facility for the Aged, Proc. of Joint 1st International Conference on Soft Computing and Intelligent Systems and 3rd International Symposium on Advanced Intelligent Systems, paper number 23Q1-5, in CD-ROM Proc., 2002
- [18] T. Shibata, T. Mitsui, K. Wada, and K. Tanie, Subjective Evaluation of Seal Robot: Paro -Tabulation and Analysis of Questionnaire Results, Jour. of Robotics and Mechatronics, Vol. 14, No. 1, pp. 13-19, 2002
- [19] T. Shibata, K. Wada, and K. Tanie, Tabulation and Analysis of Questionnaire Results of Subjective Evaluation of Seal Robot at Science Museum in London, Proc. of the 2002 IEEE Int. Workshop on ROMAN, pp.23-28, 2002