



# 학교 폭력과 외상후 스트레스 증후군

성균관대학교 강북삼성병원 정신과  
신 동 원

---

---

---

---

---

---

---

---



1. 학교 폭력의 실태
2. 학교 폭력의 정신병리
3. 학교 폭력과 외상후 스트레스 증후군

---

---

---

---

---

---

---

---



1. 학교 폭력의 실태

---

---

---

---

---

---

---

---



### 중점범위 단속 현황

연도별 \ 사업명	·약사업		·생폭력사업		·조직폭력사업		·학교폭력사업	
	·단속	·구속	·단속	·구속	·단속	·구속	·단속	·구속
·2001	·7,105	·4,099	·8,379	·3,442	·2,370	·1,346	·27,446	·2,070
·2002	·5,966	·3,545	·7,951	·3,220	·2,229	·1,406	·23,921	·2,426

---

---

---

---

---

---

---

---

---

---



연도별 \ 사업명	·음약사업		·생폭력사업		·조직폭력사업		·학교폭력사업		·아약류사업	
	·단속	·구속	·단속	·구속	·단속	·구속	·단속	·구속	·단속	·구속
·1999	·8,984	·5,571	·9,880	·4,730	·2,750	·1,756	·36,965	·4,504	·10,589	·6,416
·2000	·7,886	·4,715	·9,294	·4,263	·2,548	·1,595	·33,833	·2,977	·10,304	·5,891

---

---

---

---

---

---

---

---

---

---



### 2002년 학교폭력실태조사 (청소년폭력예방재단)

- 전국의 남녀 및 초·중·고등학생들과 교사 및 학부모  
학생표본 4,209명  
교사표본 305명  
학부모표본 336명
- 자체 제작한 설문지 사용

---

---

---

---

---

---

---

---

---

---



### 금품갈취 피해율

누군가 나를 위협하거나 때림으로써 '돈이나 물건 (시계, 운동화, 가방, 카세트, 옷, 필기구 등)'을 빼앗겼다.

	초등학교		중학교		고등학교		합계	
	2001	2002	2001	2002	2001	2002	2001	2002
전체	13.8%	15.5%	20.8%	18.6%	5.7%	4.8%	14.5%	13.6%
여자	5.1%	6.0%	8.6%	6.1%	1.8%	1.3%	5.7%	5.0%
합계	9.5%	11.0%	14.8%	12.1%	3.5%	3.3%	10.1%	9.4%

---

---

---

---

---

---

---

---

---

---



### 신체적 폭력

주먹이나 발로 심하게 맞았다.  
 흉기(소파이프, 채인, 몽둥이, 칼, 병 등)로 맞거나, 당겟볼로 지짐을 당했다.

	초등학교		중학교		고등학교		합계	
	2001	2002	2001	2002	2001	2002	2001	2002
전체	15.8%	25.2%	15.6%	14.6%	5.5%	6.1%	13.0%	15.8%
여자	8.0%	8.9%	5.2%	3.9%	1.8%	2.0%	5.2%	5.1%
합계	11.9%	17.4%	10.4%	9.0%	3.7%	4.3%	9.1%	10.6%

---

---

---

---

---

---

---

---

---

---



## 2. 학교 폭력의 정신병리

---

---

---

---

---

---

---

---

---

---



### 피해자의 정신병리-일반학생

- 정신병적 증상이 유의하게 높음  
by SCL-90-R, odds ration 17.8 p<0.05  
신성종 2000, 소아청소년 정신의학
- 부주의, 수동적, 사회적으로 미성숙, 공격적  
by CBCL, conner's ratiomg scale  
김영신 등 2001 신경정신의학회지
- 자아탄력성척도 낮음, 신체화, 과잉행동척도, 사회관계, 정신증, 자폐증 척도 높음  
by Korean personality inventory for children  
최광경 2001 소아 청소년 정신의학회지

---

---

---

---

---

---

---

---



### 피해자의 정신병리

학교폭력 피해물 주 소로 정신과 내원한 환자 13명에 대한 추적조사

- 만성 PTSD 4례  
1-6년간 경기 폭력에 노출  
자살시도 2례, 전학 2례, 해외 유학 2례  
각성증세, 재경험, 악몽, 회피증세, 학교 거절
- 일과성 스트레스 반응집단(5례)  
폭력 노출 기간 1개월 이하  
1례만이 정신장애 동반 -conversion disorder, hallucination
- 전환 가해집단(4례)  
내원사유 : 공격적 행동, 비행, 본드의 남용  
폭력에의 반박노출에 의한 불안과 우울증상, 회피증상, 격개성, 무관심 상태  
가해집단에 가담, 폭력 피해자에서 가해자로 전환

-송종효 등 1997 소아청소년정신의학회지

---

---

---

---

---

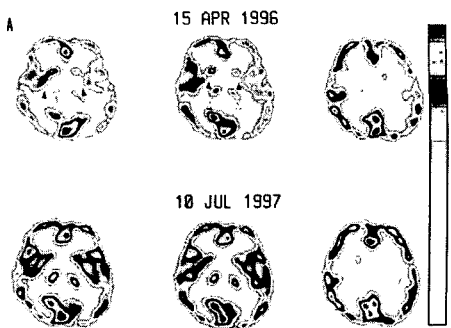
---

---

---



### 피해자의 정신병리



Shin et al. 1998 J Nuc Med

---

---

---

---

---

---

---

---



## Link between victimization and social withdrawal

- Mediator between early problem such as withdrawal and aggression and subsequent feelings of loneliness
- Rejected withdrawn children at greater risk for being chronically victimized
- Having a best friend reduces the chances of being victimized, and negative impact of victimization

*(Cowie, 2000)*

---

---

---

---

---

---

---

---



## Factors affecting socialization

1. Emotional regulation
2. Social cognition
  - Attitudes and knowledge
  - Goals
  - Understanding other minds
  - Perception of self
3. Parental factors

---

---

---

---

---

---

---

---



## Underlying conditions of social withdrawal

1. Developmental disorder
  - Delayed language development
  - Pervasive developmental disorder
  - Mental retardation
2. Externalizing disorder
  - Conduct disorder
  - Oppositional defiant disorder
  - Attention deficit hyperactivity disorder
3. Internalizing disorder
  - Mood disorder
  - Anxiety disorder
4. Deviant caring environment
  - Reactive attachment disorder
  - Maltreatment

---

---

---

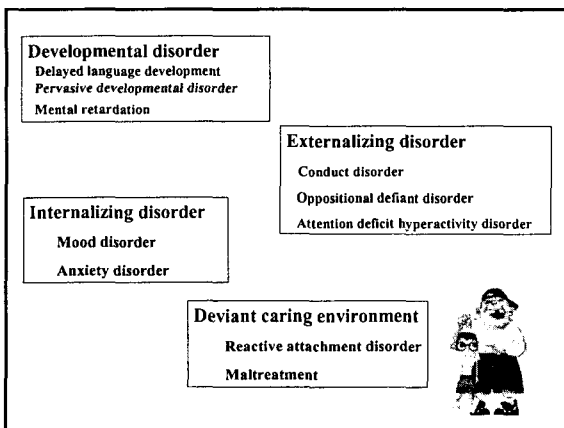
---

---

---

---

---




---

---

---


---

---

---

---

---



3. 학교 폭력과 외상후 스트레스 증후군

---

---

---


---

---

---

---

---



진단상의 유의점

- 발달 연령에 따른 증상의 다양성
- Comorbidity

---

---

---

---

---

---

---

---



# 치료

- Ensure child's safety
- Psychosocial supports
- Psychoeducation
- CBT/psychotherapy
- Pharmacotherapy

---



---



---



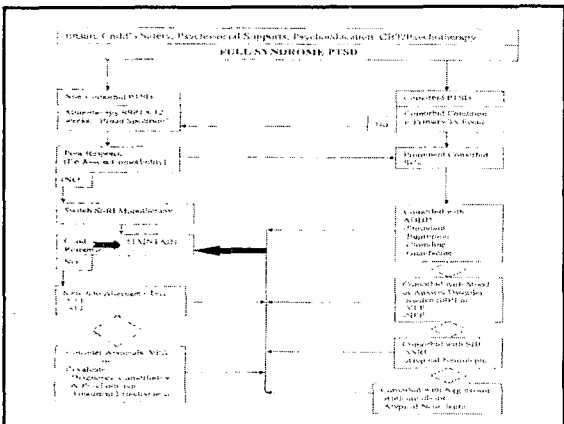
---



---



---




---



---



---



---



---



---