

A Study on the Fashion Design Work of "When the Morning Breaks New"

Hei Soon Shin

President, Kook-Je School of Fashion Design, Korea

I. Concept

The title of this gown, "Morning Breaks New" is borrowed from Hymn, with touch of Korean morning calms. This image represents the blessing time when the big red sun rises in the early morning over the hills of Korea and make the whole world vivid. This image of red sun contrasts well with green pine trees and white cranes of scene. Traditionally these elements also symbolize the peace, pureness and long lives of Koreans.

II. Construction

The noticeable structure of this gown are Panier Skirt, Sabrina Necklines, and accentuated by long shawls. The silhouette of skirt is modified with eighteenth century Panier skirt, incorporating three layered drapes on the top area of skirt and gradually giving a fullness to the bottom area which is in the similar shape of Gore skirt. Panier skirt had been the latest thing in the fashion, widely loved by all women in 18th century and also an important issue at that period. In this gown, the part of skirt is made of one of the traditional Korean fabric, linen, which is known by a rough textured feeling and used in its own natural color. The red pleats located in the center front line is also made of traditional Korean fabric, Sukghosa and expresses the rising red sun. The big inverted pleats on the back of skirt also flows with the sense of rising.

Sabrina neckline shows the full scene of upper front body and deserves special emphasis by its high raised waistline which is tied with red orange octopus shape of Korean macrame belt. This belt is embroidered with yellow and blue butterflies which was the general pattern favored by Korean ladies, And similar tie belts were also used by Korean noble mens on their outwear in old days. They wear it with dignity, an image of noble and thoughtful personality and were supported by natural colors which make this Korean style dress design more effective. The style of back on the gown is very simple rather than decorative. Korean traditional fabric, Sukghosa, in the sheer of 'see-through' is again used on a long shawl in order to coordinate with the skirt in the matter of texture. The shawl particularly has a painting of 'Morning Calm' on the end of both side and can be worn around the neck letting it flow down to the floors which has a feeling of embracing the whole world with love and charity.

III. Pattern

The oriental method and forms of expressing the feeling and/or artistic idea are represented mainly in embroidery and paintings. In Korean style, traditional natures such as flower, butterfly, sun, moon, pine tree, white cranes were commonly used on embroidery. In Chinese style, items such as dragon, cloud, flower which were used in painting were adopted

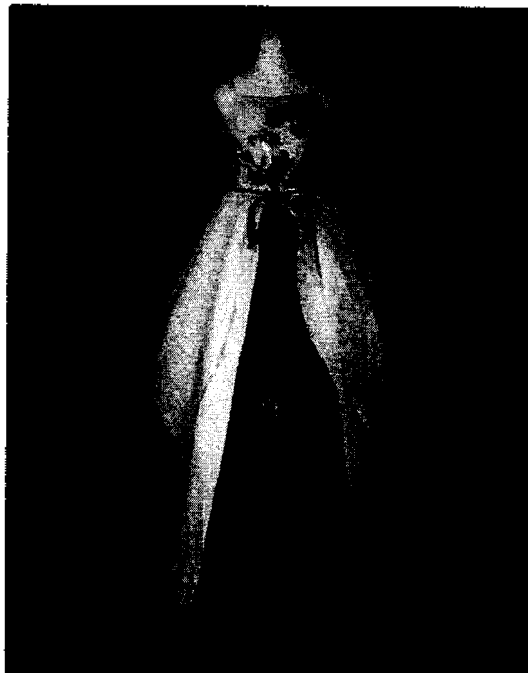
in embroidery. In Japanese style, more decorative and bright detail such as luxury cherry blossoms, peacock, lotus flower, bamboo prints with a black-and-white drawing has filled the screen with embroidery in gold or silver color. In paintings, traditional Korean ones are largely classified into natural pattern based on animals, plants and letters. In the period of Korea's Chosun dynasty, as seen in the paintings, the most popular and favorite theme had been the big red sun, white crane with long neck and green pine trees symbols for happiness and long lives as shown on bodies of this gown. You will be able to recognize the esthetic and symbolic meaning of the details which take a big part of our lives in the traditional painting.

IV. Fabric

In order to have a natural feeling of traditional Korean fabric, Mosi from HanSan area and Sukghosa used in this gown had no artificial bleach and it imposes the simple and natural Korean beauty magnificently. These fabrics, comfortable and readily obtainable in the agricultural age became a very important material for Korean's wear

V. Conclusion

Fabric, Mosi, Sukghosa, the traditional Korean materials and silhouette of Panier Skirt, Sabrina Neckline, representing western style is modified in this work. The paintings on the shawl and tying ornaments contrasts with each other in the view of harmony. Furthermore, the philosophy and an image of 'Morning Calm of Korea' are stood out in this long evening gown.



<Figure> "When the Morning Breaks New".