

.....

Web Services: Next Generation Computing



정철용
상명대학교 경영학부
cyjung@smu.ac.kr

.....

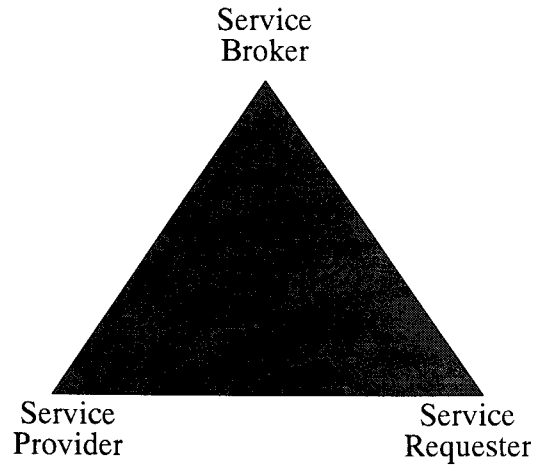
.....

What are Web Services?

- W3C
 - A software application
 - identified by a URI,
 - whose interfaces and binding are defined, described and discovered by XML artifacts
 - supports direct interactions with other applications (devices) using XML based messages via internet-based protocols
 - WS-I
 - Standards-based integration and interoperability across platforms, applications, and programming languages
-

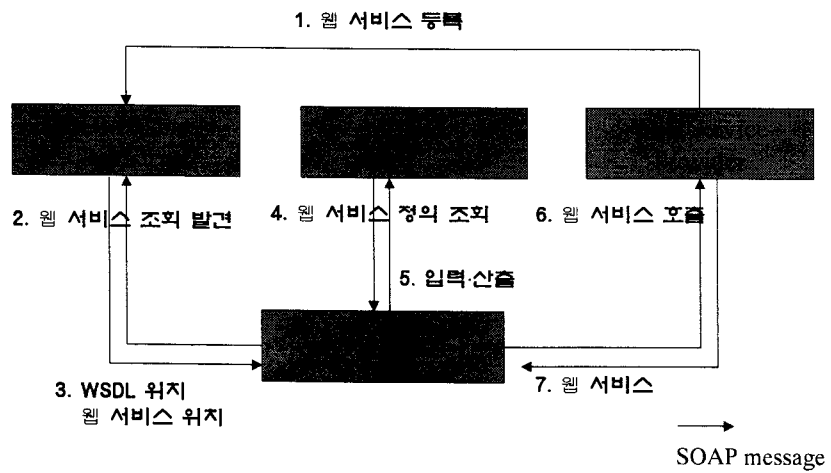
⋮

Web Services: Service Oriented Architecture



⋮

Web Service Framework



Delayed Stock Quote Web Service

WSDL <http://services.xmethods.net/soap/urn:xmethods-delayed-quotes.wsdl>

```
<definitions name="net.xmethods.services.stockquote.StockQuote" ...>
  <message name="getQuoteResponse1">
    <part name="Result" type="xsd:float" /> </message>
  <message name="getQuoteRequest1">
    <part name="symbol" type="xsd:string" /> </message>
  <portType name="...">
    <binding name="..." type="...">
      <soap:binding style="rpc" transport="http://schemas.xmlsoap.org/soap/http" />
      <operation name="getQuote">
        <soap:operation soapAction="urn:xmethods-delayed-quotes#getQuote" />
        <input><output></operation></binding>
    </portType>
  <service name="net.xmethods.services.stockquote.StockQuoteService">
    <documentation> ... </documentation>
    <port name="..." binding="...">
      <soap:address location="http://66.28.98.121:9090/soap" /> </port></service>
  </definitions>
```

Delayed Stock Quote Web Service

DreamFactory Client Interface for XMethod Web Service:
<http://www.dreamfactory.com/xmethods/page3.html>

Stock Quote Service from XMethods

Symbol	Name	Price	Shares	Total
DIS	Disney, Incorporated	18.89	400	\$7556
IBM	International Business	87.57	100	\$8757
BEAS	BEA Systems	11.89	400	\$4756
MSFT	Microsoft	26.13	500	\$13065

Stock Quote Input SOAP

```
<?xml version="1.0" encoding="UTF-8"?>
<SOAP-ENV:Envelope
  xmlns:SOAP-ENV="http://schemas.xmlsoap.org/soap/envelope/"
  xmlns:xsd="http://www.w3.org/2001/XMLSchema-instance"
  xmlns:xs="http://www.w3.org/2001/XMLSchema" >
  <SOAP-ENV:Body>
    <ns1:getQuote>
      <xmns:ns1="urn:xmethods-delayed-quotes"
        SOAP-ENV:encodingStyle="http://schemas.xmlsoap.org/soap/envelope/"
        <symbol xsi:type="xsd:string">MSFT</symbol>
      </ns1:getQuote>
    </SOAP-ENV:Body>
  </SOAP-ENV:Envelope>
```

Manage Portfolio

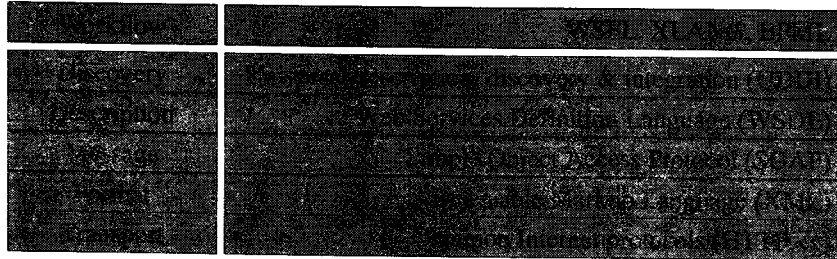
Stock Quote Output SOAP

```
<?xml version="1.0" encoding="UTF-8"?>
<soap:Envelope
  xmlns:soap="http://schemas.xmlsoap.org/soap/envelope/"
  xmlns:xsd="http://www.w3.org/2001/XMLSchema-instance"
  xmlns:xs="http://www.w3.org/2001/XMLSchema"
  xmlns:soapenc="http://schemas.xmlsoap.org/soap/encoding/"
  soap:encodingStyle="http://schemas.xmlsoap.org/soap/encoding/" >
  <soap:Body>
    <n:getQuoteResponse xmns:ns="urn:xmethods-delayed-quotes">
      <Result xsi:type="xsd:float">26.13</Result>
    </n:getQuoteResponse>
  </soap:Body>
</soap:Envelope>
```

•
•
•

Why Web Services?

- Internet and XML-Based Open Standard



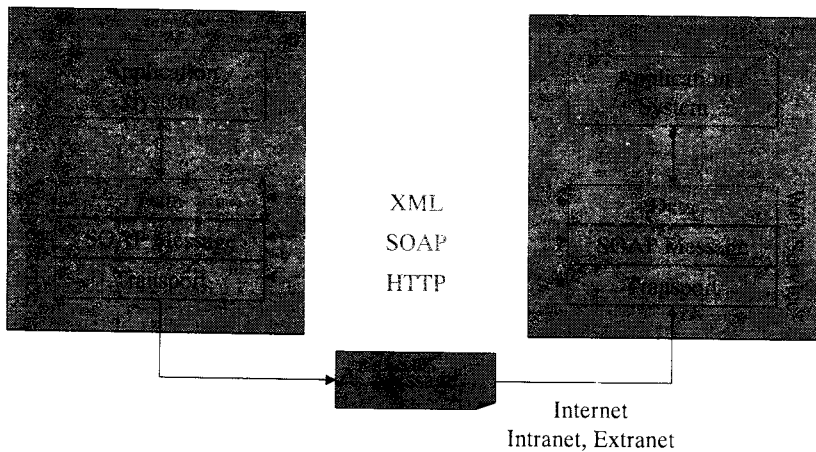
- Interoperability
- Modularity, Component-Based
- Led by large vendors: IBM, Microsoft, SUN, BEA, Oracle, ...

• • • • • • • • • •

•
•
•

Integration and Interoperability

Vendor, Platform, PL, and Device Neutral

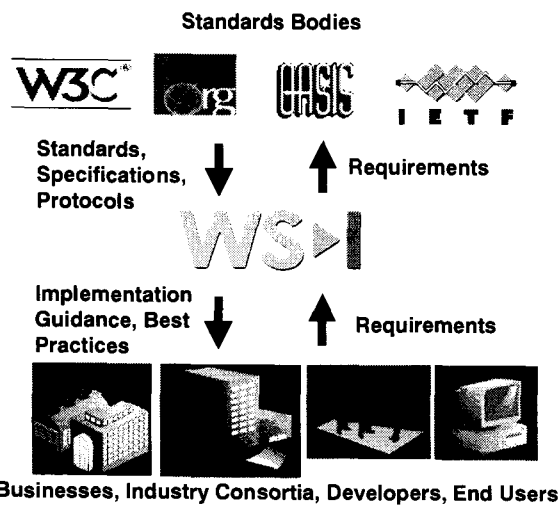


• • • • • • • • • •

WS-I

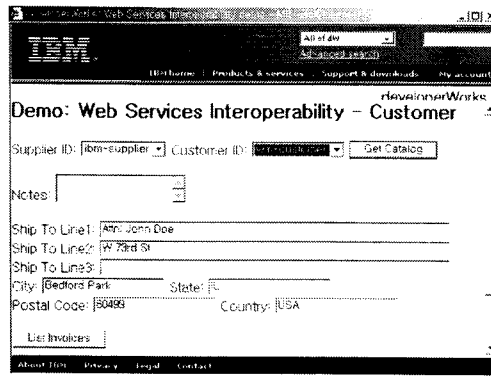
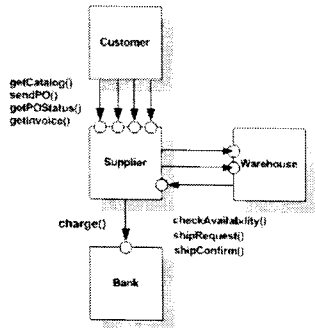
- The fundamental characteristic of Web services is *interoperability*
 - An Internet-native distributed computing model based on XML standards
 - Within an enterprise
 - Between business partners
 - Across a heterogeneous set of platforms, applications and programming languages
- Web Services Interoperability Organization
 - Consistent, reliable interoperability between Web services technologies from multiple vendors
 - A *standards integrator* to help Web services advance in a structured, coherent manner

WS-I, Standards and Industry



Web Services Interoperability Demo

- <http://www.xmethods.net/wsid/online/>
- IBM, IONA E2A, webMethods



ibm-supplier Catalog

Quantity	Item Name
<input type="text" value="1"/>	1.4 GHz CPU
<input type="text" value="1"/>	1.0 GHz CPU
<input type="text" value="1"/>	512 MB Mem Card
<input type="text" value="1"/>	256 MB Mem Card
<input type="text" value="1"/>	850 MHz Lap
<input type="text" value="1"/>	Floppy disks
<input type="text" value="1"/>	60 GB Hard D
<input type="text" value="1"/>	40 GB Disk D
<input type="text" value="1"/>	Ethernet Cab
<input type="text" value="1"/>	Cool Game Software

Purchase Order

PO Number:
 Supplier ID:
 Ship To Line1:
 Ship To Line2:
 Ship To Line3:
 Ship To City:
 Ship To Postal Code:

Notes:

Line Number	Item Number	Item Name
1	1001	1.4 GHz CPU 256 MB
Subtotal		

Status: **ACCEPTED**

Invoice List

Number	Timestamp	PO	Supplier	Customer
IBMS-5	May 7, 2003 1:18:30 PM	IBMC-1052328730000	ibm-supplier	ibm-customer
IBMS-6	May 7, 2003 1:32:10 PM	IBMC-1052328730000	ibm-supplier	ibm-customer
IBMS-4	May 7, 2003 2:11:15 AM	IBMC-1052328730000	ibm-supplier	ibm-customer
IBMS-1	May 8, 2003 12:29:25 AM	DeanFactory-51020NWR150037901	ibm-supplier	ibm-customer
IBMS-3	May 7, 2003 2:11:15 AM	IBMC-1052328730000	ibm-supplier	ibm-customer
IBMS-2	May 8, 2003 12:30:03 AM	DeanFactory-10077478773282PM	ibm-supplier	ibm-customer

Invoice

Invoice Number: Timestamp:
 PO Number:
 Supplier ID: Customer ID:

Notes:

Line Number	Item Number	Item Name	Quantity	Unit Measure	Unit Price	Line Total
1	1001	1.4 GHz CPU 256 MB	10	EACH	899.00	8,990.00
Subtotal						8,990.00
Tax						719.20
Shipping						89.90
Total						9,799.10

•
•

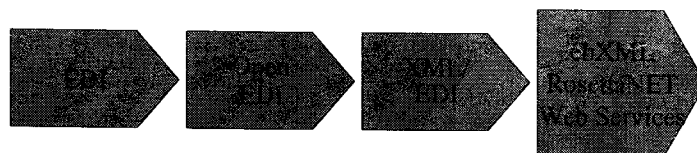
EAI and Web Services

- Types of EAI
 - Data-oriented Integration
 - ETL to Data Warehouse, Data Mart
 - Function or Method-oriented Integration
 - API, RPC, CORBA, Java RMI, DCOM, Web Services
 - User Interface Integration
 - Enterprise Portal
 - Business Process-oriented Integration
 - Integration Broker
 - Web Services
 - Loose, partial, ad hoc integration
 - Convergence of EAI solutions and Web services
 - Tibco, BEA, IBM, webMethods, ...
 - SAP, PeopleSoft, Siebel, ...
- • • • • • • •

•
•

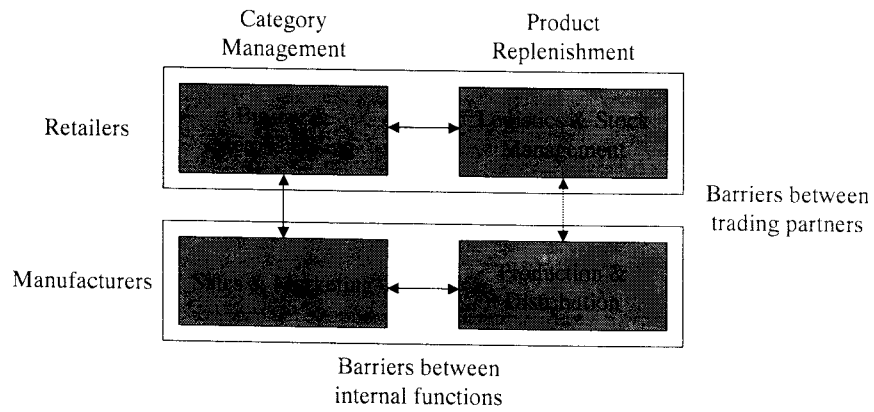
B2Bi

- Collaborative commerce, SCM, CRM, ...
- Connectivity & Interoperability
 - Standardization of Information Communication and Technology
 - Business Process Integration



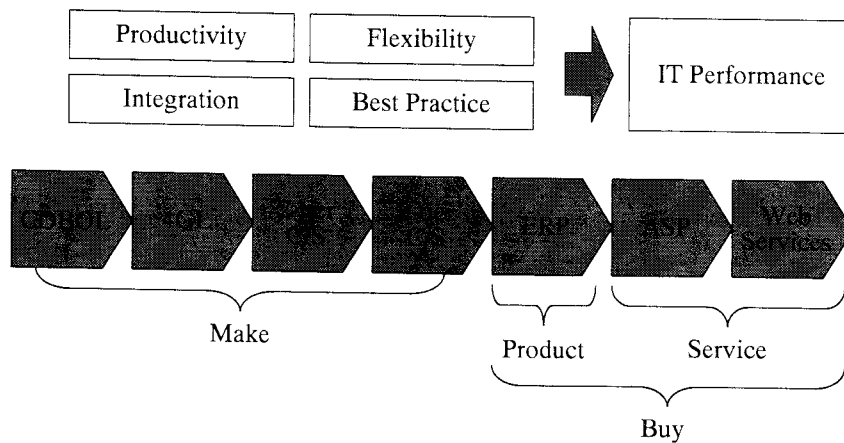
Barriers in B2Bi

- Efficient Consumer Response



Application Systems Acquisition

- Hosting models of software services



ASP: Pros and Cons

- Pros

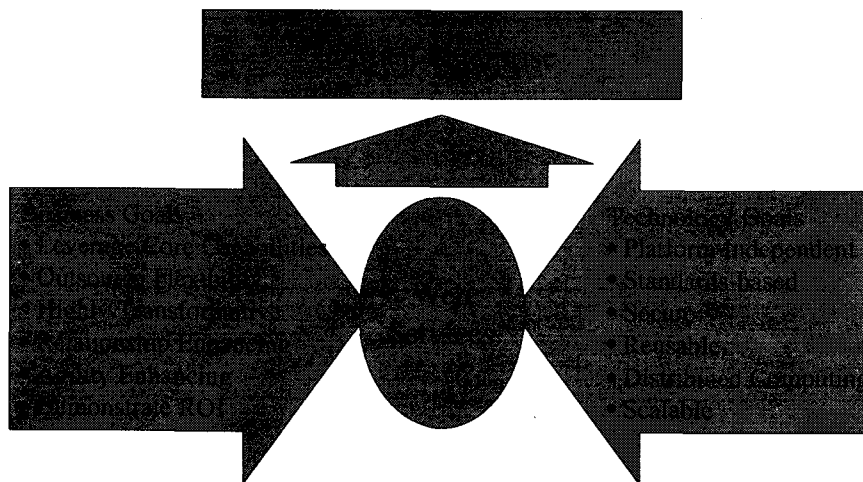
- Low Cost of Entry
- Time-to-Market Advantage
- Usage-Based Pricing Model Facilitates ROI
- Displacement of Risk Burden onto Vendor

- Cons

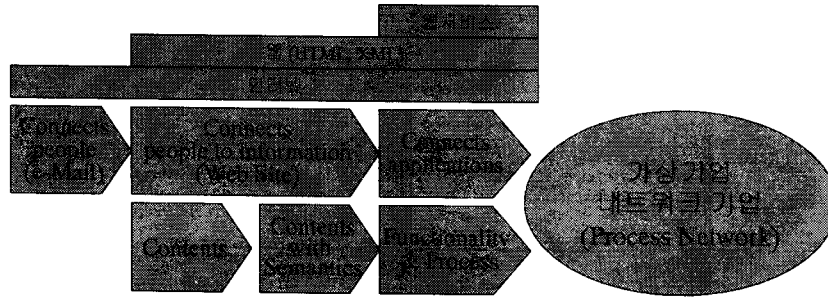
- Loss of Control (Security)
- Limited Customization Ability
- Integration Challenges Can Negate Cost Advantage
- Few Best Practices for Critical Applications

Greater operational efficiency, but slow adoption of ASP model

Enabling Virtual Enterprise



Business Goal of Web services

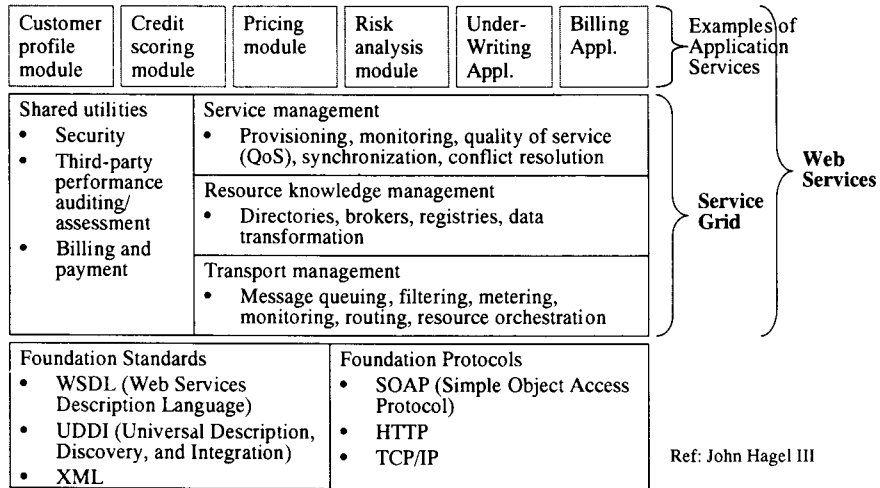


- Provision of software as a service in a distributed environment
- To enable enterprises to focus on core competencies while outsourcing all other functions
 - Ex: Credit authorization, Just-in-time productivity and quality-of-service monitoring

Architecture Principles

- Challenges Addressed
 - Distributed centers of control
 - Diversity of technology platforms
 - Dynamic business environment
- Architecture Principles
 - Openness
 - Simplicity
 - Loose coupling

Web Services Architecture



Web Services Networks

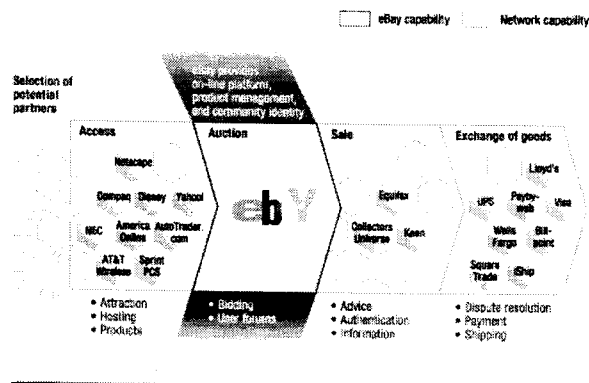
- Security
- Reliability
- Manageability
 - Grandcentral: Hub and Spoke
 - Kenamea
 - Flamenco Network: P2P
 - Transact Plus
 - Bang Network

기업의 분해 및 집중

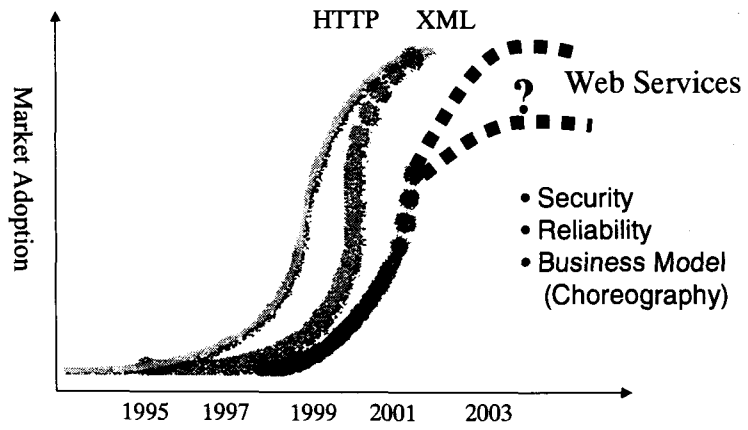
	Customer Relationship Management	Product Innovation & Commercialization	Infrastructure Management
Economic Driver	<ul style="list-style-type: none"> Economies of scope High cost of customer acquisition makes it imperative to gain large wallet share 	<ul style="list-style-type: none"> Speed of development Early market entry allows for a premium price and large market share 	<ul style="list-style-type: none"> Economies of scale High fixed costs make large volumes essential to achieve low unit cost
Skills	<ul style="list-style-type: none"> Direct marketing 	<ul style="list-style-type: none"> Innovation 	<ul style="list-style-type: none"> Efficient operations
Competition	<ul style="list-style-type: none"> Battle for scope; rapid consolidation; a few big players dominate 	<ul style="list-style-type: none"> Battle for talent; low barriers to entry; many small players thrive 	<ul style="list-style-type: none"> Battle for scale; rapid consolidation; a few big players dominate
Culture	<ul style="list-style-type: none"> Customer focused; service oriented 	<ul style="list-style-type: none"> Employee focused; creativeness 	<ul style="list-style-type: none"> Cost focused; standardization and efficiency

Strategic Symphony

- Network Orchestrator + Specialists



The Opportunity



Conclusion

