



압출 및 중공성형의 CAE 해석을 통한  
금형 설계 최적화

2002년 2월 27일  
유인경

---

**ATES** 1



**CAE(Computer Aided Engineering)**를  
이용한 유체의 유동 및 열전달 해석

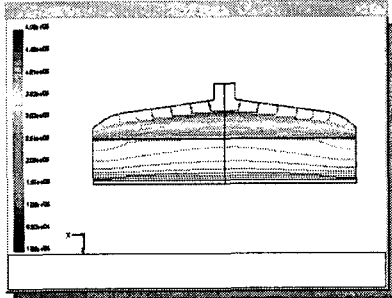
- ◆ An Engineering Tool
  - Computer “experiments”(컴퓨터로 수행하는 모의실험)
  - 설계
  - Troubleshooting
- ◆ 수치해석 방법
  - 유체 유동방정식의 해석
  - A Graphical User Interface
    - ◆ 문제 설정
    - ◆ 해석
    - ◆ 결과 가시화

---

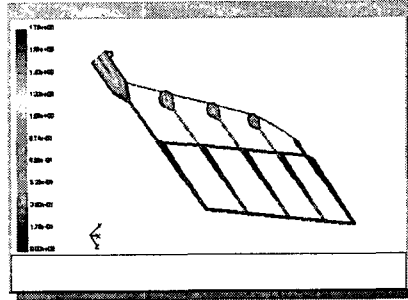
**ATES** 2



# SKYGREEN PETG - 시트 압출



압력 분포



속력 분포

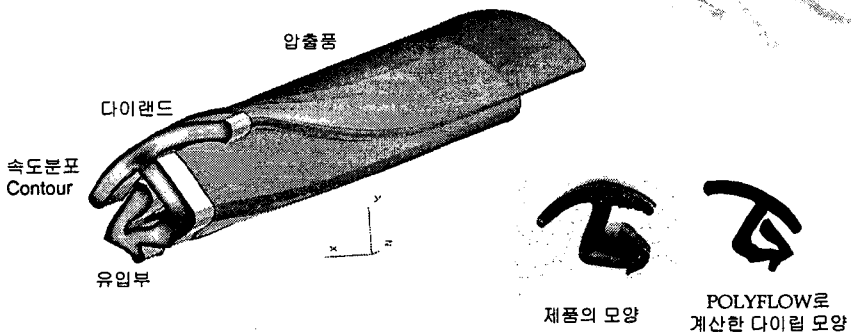
SK Chemicals Co., Ltd.

ATES

3



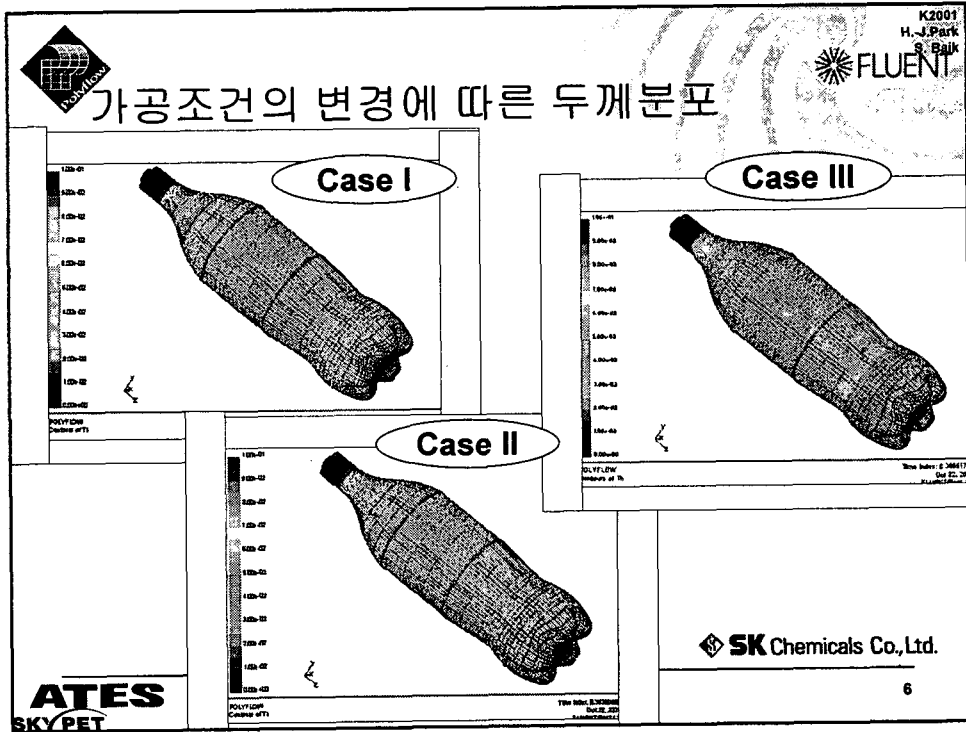
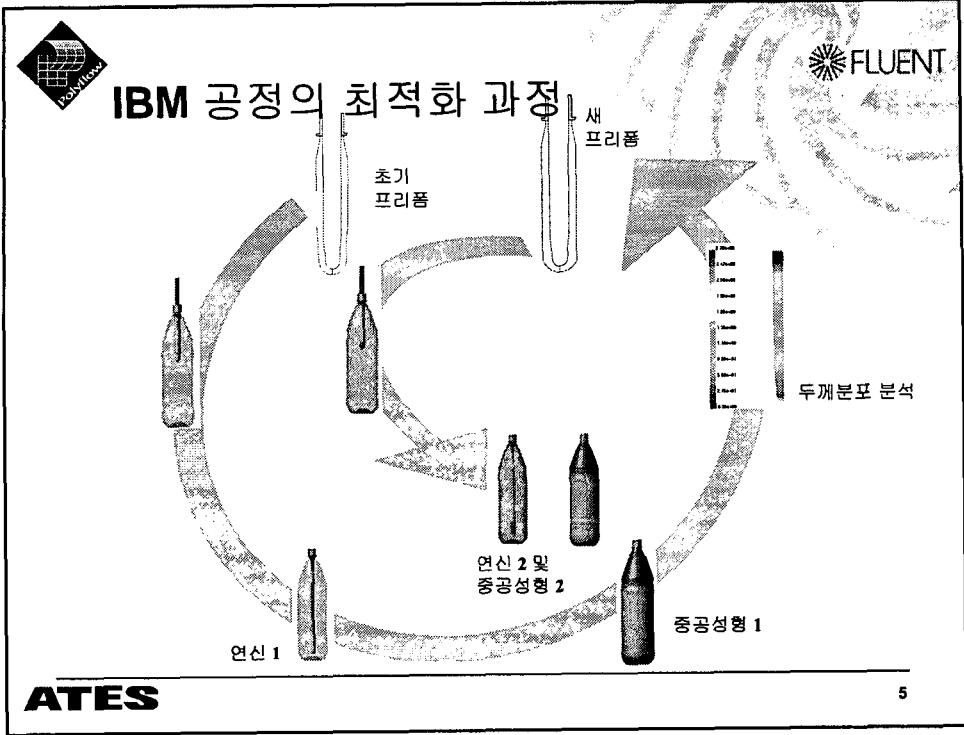
# 역압출 기능



POLYFLOW의 역압출 기능을 사용하면 원하는 압출품 모양을 생산하도록 최적의 다이립 모양 설계를 할 수 있다.

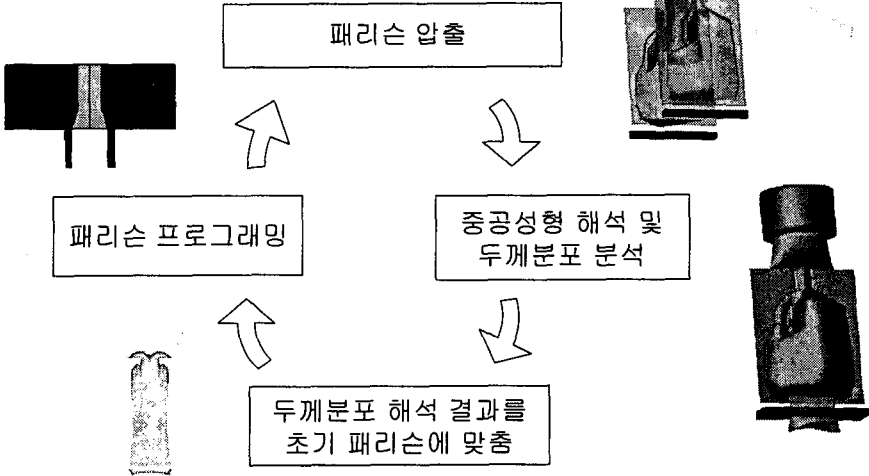
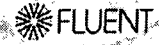
ATES

4





# EBM 공정의 최적화 과정

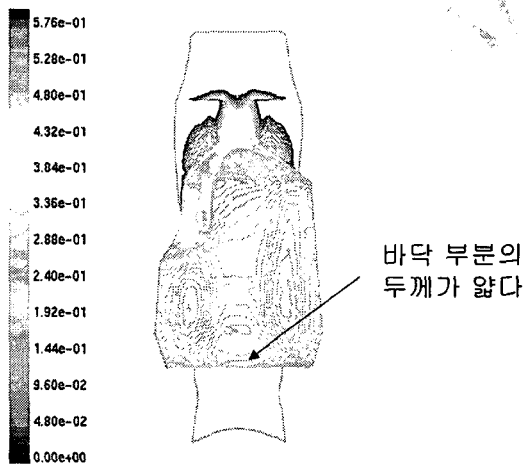


ATES

7



# 두께 분포



ATES

8