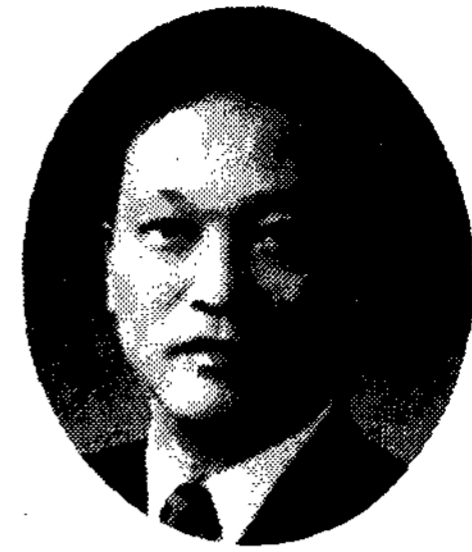


Symposium II-1

Complications in Surgical Phase and Their Solutions

최성용 원장

최성용 치과의원



Complications

- Intraoperative
- Postoperative
- Prosthetic
- Late

INTRAOPERATIVE COMPLICATIONS

Intraoperative Complications

- Bleeding
- Nerve injury
- Perforations
- Mx. Sinus
- Nasal cavity
- Lingual cortical plate
- Mandibular inferior border

Intraoperative Complications

- Unable to seat the implant
- Damage to the external hex
- Damage to the adjacent teeth
- Insufficient primary stability

Bleeding

- From the bone
- From the flap
- From the inferior alveolar canal
- From the artery

Perforations

- Mx, sinus
- Nasal cavity
- Lingual cortical plate
- Mandibular inferior border

Mx, Sinus Perforations

- 2~3 mm lifted /tented sinus membrane
- Usually no complications
- May induce bone growth under the membrane
- Torn membrane
- Exact / Shorter implant
- Usually no complications
- Sticked-out implant
- Success rate
- Antibiotic coverage
- Observe any sinusitis symptoms

Unable to seat the implant

- Check the path
- Judicious use of hand wrench
- Retreat the implant & tapping

Damaged external hex

- Replace
- If single replacement
- Remain
- If fully seated & multiple replacement

Damage to the adjacent tooth

- Remove the implant
- Replace with correct path
- Endodontic treatment
- Adjacent tooth

Insufficient Primary Stability

- Replace
- Wider / longer implant
- Use bone graft
- DFDBA
- Resorbable HA
- Bio-oss
- Osteogen

Nerve injury

- Inferior alveolar nerve
- Lingual nerve
- Mental nerve

Prevention

- Accurate diagnosis
- Radiograph during procedure
- Place broad elevator
- On the lingual cortical plate
- Expose the mental nerve

POSTOPERATIVE COMPLICATIONS

Immediate Postoperative Complications

- Hematoma / swelling
- Infection
- Paresthesia / anesthesia

Infection

- Pain / swelling / exudate
- Removal 1 or 2 sutures
- Antibiotic coverage

Paresthesia / Anesthesia

- Radiograph
- Mapping of the affected area
- Observe if implant is above the canal
- Implant removal /replacement

Sensation test

- Sharp test
- Wisp test
- Heat test
- Cold test
- Discriminatory test

Cover screw exposure

- Within 4 weeks
- Change the cover screw & cover
- After 4 weeks
- Chlorhexidine irrigation

약력

서울대학교 치과대학 졸업

미국 USC 치과대학 졸업

미국 Loma Linda 대학원(치주학 및 임플란트학 전공)졸업

미국 Loma Linda 대학원 조교수

(현) 최성용 치과의원 원장

고려대학교 대학원 외래교수

삼성의료원 외래교수